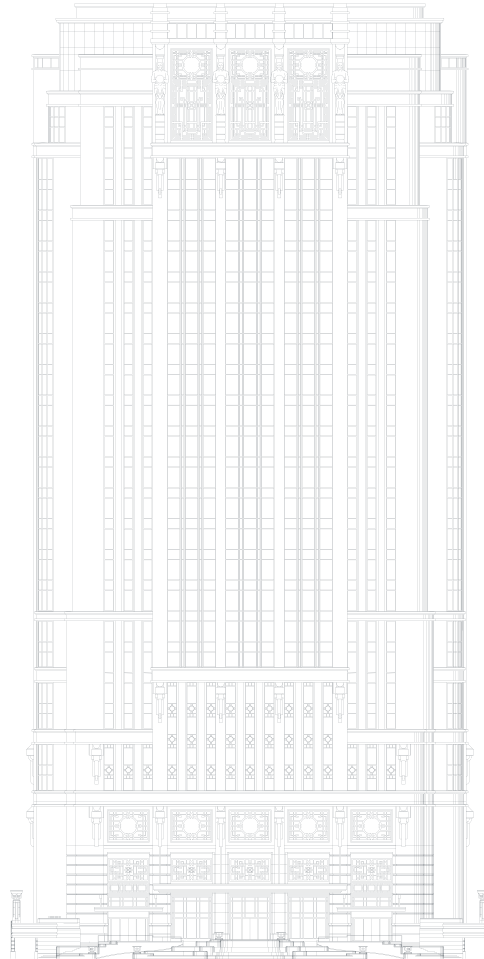
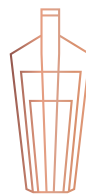




ATLAS

THE ATLAS COLLECTIONS





Dear Guests,

Welcome to ATLAS - a labour of love that honours my grandfather, CS Hwang, the late founder of Parkview Group, and the beautiful space he created in which ATLAS resides. It is our hope that your experience at ATLAS reflects the passion and attention that has gone into every aspect of its creation. A grand and beautiful space, we invite you to unwind, enjoy, celebrate and indulge as our talented and dedicated ATLAS team makes you feel most welcome and at home.

The ATLAS Collections feature two of the world's most remarkable physical collections of Gin and Champagne. Building the ATLAS Collections was a monumental task which took over two years to curate and assemble. We are also delighted to feature a selection of rare and exceptional still wines and whiskies from my own family's private cellar, which for the first time since its inception almost 40 years ago, has been opened especially for our guests at ATLAS.

Building upon the modest collection of wines started by my grandfather, the Parkview Family Cellar found a permanent home in 1989 with the opening of the Parkview Group's flagship property, Hong Kong Parkview. Initially consisting of a small collection of 50 bottles of right bank Bordeaux wines, the collection grew steadily under the stewardship of my uncle, George Wong, and his son Alex.

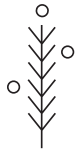
By 2000, the collection was at 3,000 bottles and has now expanded beyond the right bank to other regions in France and the rest of the world. Currently, the collection stands at 50,000 bottles of fine wine and over 10,000 bottles of whiskey acquired through reputable merchants, auctions, and numerous trips to the wineries and distilleries where suppliers have now become close friends, ensuring that the family always has access to the finest and rarest bottles.

For those who share our genuine passion for fine wines and spirits, a small but special sampling of the bottles from the Parkview Family Cellar have been brought to ATLAS for you to enjoy. We hope that you are able to try things here that you would otherwise not find; and that you will enjoy our treasures as much as we have enjoyed collecting them and sharing them with you.

Warmest regards,

Vicky Hwang

TABLE OF CONTENTS



THE ATLAS GIN COLLECTION

Introduction by the ATLAS Master of Gin

Countries Represented

A Guide to the Wonderful World of Gin

Our Taxonomy of Taste

Seven Most Common Botanicals

The Search for the Perfect Pairing

GIN CATEGORIES

London Dry

Modern

Overproof and Navy Strength

Barrel-Rested

Old Tom

Sloe Gin

Genever

Rare & Collectable



FINE SPIRITS OF THE WORLD

Whisk(e)y

Brandy

Sugarcane

Agave

Vodka

Absinthe

Vermouth

Aperitif

Digestif

Liqueur



THE ATLAS CHAMPAGNE COLLECTION

La Sélection

Le Terroir

La Prestige

FINE WINES OF THE WORLD

White

Rosé

Red

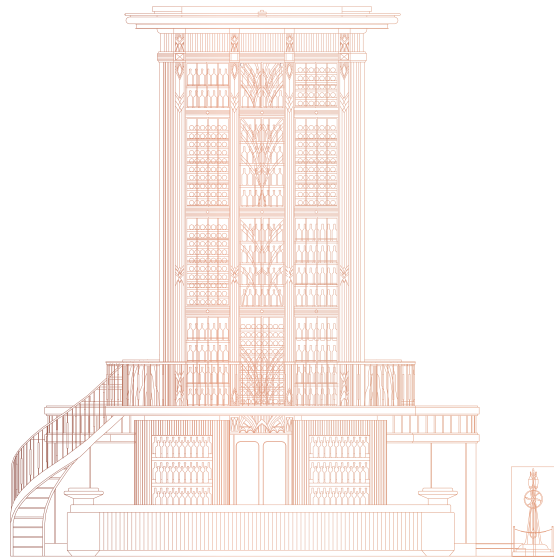
Sweet

Parkview Family Collection

White

Red

THE ATLAS GIN COLLECTION



Gin; a clear alcoholic spirit distilled from grain and flavoured with juniper berries (and other botanicals). The name is derived from the French genièvre or the Dutch jenever, which both mean juniper.

Juniper; an evergreen, dioecious shrub that grows all throughout the Northern Hemisphere. It produces a long ripening berry that when dried can impart a piney, citrusy, floral aroma and flavour.



Welcome to the ATLAS Gin Collection; a labour of love that has involved collecting, carefully curating and cataloguing the entire world of gin. Our aspiration is to introduce our guests to the beauty and wonder of this incredible spirit.

Gin is liquid history. From the tombs of ancient Egypt, the monasteries of the Middle Ages, the laneways of the Industrial Revolution, through Prohibition and to the current Second Golden Age of fine drinking, gin has been drunk by all classes and in all corners of the globe. For over two millennia juniper berries have been used for ritual, medicinal and gastronomic purposes. For almost 1,000 years, this unique botanical has been used in fine beverages, namely gin.

Gin is provenance; it looks to the natural world for flavour, aroma and sensation. Gin is the quintessential cocktail ingredient, and since the turn of the twentieth century has been a bartender's favourite cocktail spirit. It is a beacon for sophistication and style, yet is founded upon mayhem and grit. Gin is a delicious spirit; it runs the gamut of fresh, vibrant and zesty, to floral, soft and delicate. It can be robust and bracing, it can be savoury and spiced.

Here at ATLAS, we are delighted to share one of the world's finest collections of gin with you. We have arranged our gins into seven different categories, therein lies numerous flavour profiles, botanicals and expressions of the juniper spirit. Our passionate and dedicated gin team stands ready to assist you in your gin journey.

Jason Williams

Founding Curator of the Gin Collections, Master of Gin

The ATLAS Gin Collection

Argentina (1)	Latvia (1)
Australia (91)	Luxembourg (1)
Austria (7)	Netherlands (84)
Belgium (47)	New Zealand (24)
Brazil (3)	Norway (5)
Cambodia (2)	Peru (2)
Canada (35)	Philippines (4)
China (1)	Poland (2)
Colombia (2)	Portugal (10)
Croatia (1)	Romania (1)
Czech Republic (2)	Scotland (114)
Denmark (2)	Singapore (10)
England (341)	South Africa (40)
Estonia (3)	Spain (58)
Finland (11)	Sri Lanka (3)
France (32)	Sweden (17)
Germany (53)	Switzerland (18)
Greece (3)	Taiwan (2)
Guatemala (1)	Thailand (6)
Iceland (2)	United States of America (130)
India (7)	Venezuala (1)
Indonesia (1)	Vietnam (9)
Ireland (26)	Wales (10)
Israel (1)	
Italy (48)	
Japan (23)	
Korea (1)	
Kenya (3)	

THE 'GIN RATION' DECREE

The ATLAS Gin Collection is a rare and special treasure, designed to be enjoyed by all. As such, we must insist on a Gin Ration, just like the old days in the Royal Navy in the United Kingdom. For the special gins in our collection – those where only one or two bottles have been carried from afar - guests are allowed just one pour of each gin per visit to ATLAS.

If you love gin as much as we do, or would like to taste even more of the rare gins that arrive at ATLAS, please ask about becoming a member of our Juniper Society.

◊ denotes gins that are subject to the Gin Ration.

A GUIDE TO THE WONDERFUL WORLD OF GIN

The world of gin has become wide and deep. Furthermore, there is a distinct lack of categorisation compared to other spirits, such as Tequila or Cognac. To help you navigate our remarkable gin collection we have split the gins into the following categories:

LONDON DRY

The archetypal style of gin. The most traditional and what most people know as Gin. Legally defined by production technique: a distilled gin with real botanicals and nothing added after distillation. Actually, it does not have to be made in London and usually has more prominent juniper representation.

MODERN

We define (loosely, admittedly) modern gin as one that doesn't fit the juniper-forward London Dry Gin style. Gins that celebrate or highlight an abundance of botanicals, or have an emphasis on fruit or spice, or gins that champion location or technique.

OVERPROOF AND NAVY STRENGTH

Gin has a rich history within the British Royal Navy, for centuries it was issued to all ships sailing the high seas. Traditionally, to prove its strength and quality, it had to be able to wet and ignite gun powder. Over time it was deduced that the lowest proof for this experiment to succeed was 114 proof, or 57% abv (alcohol by volume). This higher proof makes the gin and the botanicals shine.

BARREL-RESTED

When a gin has been stored in a wooden cask for a period of time, imparting some of the colour and character of said wood, it is classified as a barrel-rested gin. A sub-category that has boomed in recent years but has historical precedents. Once upon a time, all gins would have been stored and transported in a barrel!

OLD TOM

A style of gin popular in the 18th and 19th century in a time when techniques such as sweetening or the addition of extra botanicals were used to mask the flavour of poorly made (or dangerous) gins. Now it is back in a more craft iteration with variations including different sugars and wood ageing.

SLOE GIN

Actually a gin liqueur, this is a traditional drink from the English countryside. Made from sloes, the plum-like fruit that grows on blackthorn hedgerows dividing old properties. Simply gin, sloe berries and sugar.

GENEVER

Not actually gin! We keep a hefty collection of this because it's important to the history of gin. This mostly Dutch spirit is considered the precursor to what we know as gin. It's kind of like a mix between unaged whisky and gin. It is sweet, and very cereal-like.

*after this categorisation, we further split the gins into flavour profiles.
we invite you to explore our taxonomy of taste next!*

OUR TAXONOMY OF TASTE

Through much research, testing and the resulting inebriation (hiccup), the ATLAS Team landed upon the following terminology to best convey the flavour profile of our gins. The taxonomy is meant as a guide and within each designation the prominence of that sensation may vary wildly. Taste is subjective, so go easy if you disagree!

CITRUS

bright, zingy, refreshing

Bright, fresh, blossomy goodness. Can be a burst of orange sherbet, a suggestion of lemon curd. Some zesty lime skin or sweet, bitter grapefruit. Can be a restrained hint of citrus pith. An explosion of perfumed citronella.

FLORAL

bouquet, perfumed blooms, petals

A bouquet of excellence. The new modern of deliciousness. Sometimes perfumed blooms of all manner of flowers, petals, stalks and dried spices. Other times more restrained, with subdued fragrance of sweet flower-wonder.

HERBAL

fresh bunch, dried leaves, vegetal

Tight bunches of all herbs. Fresh, wet and dried. Fossilized herbs with tannic tea leaves. The snapped stalk of an old rosemary bush. Sweet basil and herbs de Provence. Sometimes pungent, sometimes mild.

SPICED

peppers, baking spices, fragrant

Lifted baking spices, exotic peppers, fragrant arboreal notes mixed with subtle sweet aromatic dried wood. Maybe a little tingle, maybe a little dessert-like spice. Maybe like a sauna with the heat turned up.

LUSCIOUS

delicate, velvety sweetened, scrumptious

Vibrant, lifted botanicals. Extra flowers, fruits, herbs and spices to give deliciousness. Often delicate and balanced with sophisticated lusciousness. Sometimes confectionary with over-the-top youthful fruitiness.

NUTTY

rustic, woody, savory edge

Rustic candy of the earth. Nuts and seeds and kernels of all sorts. Ground-up woody flavour mixed with some sweet chalk, and soft spice. Oily sometimes, brown and beige and sweet and nice with a savoury edge.

EARTHY

dark rich soil, turf, wet leaves

Dark rich soil, wet leaves and turf. Chalk-like with a combination of menthol, compost and forest floor. Can be recognized as fresh earth, withering underlay or top notes of perishing leaves.

GRASSY

greenness, tall grass, meadow

Sweet, greenness. Long stalks of fresh tall grass. Reeds, grass clippings, just-cut soft herbs and a meadow blanket of lively fresh lawn. Some straw-like bundles of hay.

BERRIES

plump, roundness, jammy

Plump, fruity roundness. Darker and sweeter fruity notes and some left-on-the-vine ripeness. Notes of something jammy, fruit preserves like strawberry or plum or of course those blackthorn sloes.

FRUITY

exotic, audacious, not fruit flavoured

Audacious and fun-loving. Packed full of who-knows-what. Exotic fruits, flowers and other botanicals from around the world. Modern iterations of traditional gin. Not fruit-flavoured gins, but distilled gins with an emphasis on fruity flavour.



SEVEN MOST COMMON BOTANICALS

JUNIPER

Gin has to have this to be called gin. A small dried berry. Smells and tastes like spruce and pine. Nice burnt citrus, underripe plum and dry branch. Forest floor, in a good way.

CORIANDER SEED

In nearly all gins. This is the spicy, woody little seed from the bush. This botanical gives gins a lifted citrus quality when there is no citrus. Sweet, spicy wet wood and lemon sherbet.

ANGELICA

The third most used botanical. Usually the root. Musky, woody and more earthy than the other spices in the 'holy trinity'. Known as a fixative spice to help the others shine.

NUTMEG

A staple on spice shelves and native to South East Asia. Another warming, spiced botanical that gives gins some extra length on the palate. Used widely in cooking, cosmetics and gin.

ORRIS

The dried root of the iris plant. Used as a base ingredient to bind other ingredients together, similar to how it's used in perfumery. By itself it can give off a floral, violet petal like aroma.

CASSIA

The bark from an evergreen tree native to South Asia. Resembling cinnamon, it has a distinct, sweet, fiery yet warming fragrance. It has a delightful pungency that adds warmth and depth to a gin.

LEMON

While other botanicals can give the impression of citrus, dried lemon peel is often the contributor. It gives a fresh brightness. The result can vary from confectionery to real, bite-a-lemon sensation.





THE SEARCH FOR THE PERFECT PAIRING

Tonic water was first used as a medicinal treatment for malaria by British troops in the 19th century. To counter the bitterness of early iterations of tonic, gin was mixed with tonic to make it more palatable. And thus, the G+T was born. The most celebrated pairing in any spirit category, the two-letter combination everyone knows.

Choosing the right tonic is as vital as choosing your gin. We have suggested pairings below, a wealth of possibilities await.

East Imperial ATLAS Tonic

classic, the highest quinine available, a hint of lemongrass
enjoy with citrusy, spiced and earthy gins

East Imperial Yuzu Tonic

aromatic, sweet yet strong, japanese citrus fruit
enjoy with citrusy, herbal and grassy gins

East Imperial Royal Botanic Tonic

lifted quinine, with elderflower, notes of ruby grapefruit
enjoy with citrusy, floral and fruity gins

Ekobryggeriet Rhubarb

tart, with soft strawberry and green apple
enjoy with spiced, luscious and floral gins

Fever Tree Mediterranean Tonic

fragrant, with the addition of soft herbs and lemon thyme
enjoy with spiced, nutty and earthy gins

Franklin & Sons Elderflower & Cucumber

crisp undertone with delicate elderflower
enjoy with fruity, luscious and citrusy gins

Franklin & Sons Mallorcan

savoury, with aromatic rosemary & thyme and zesty citrus
enjoy with citrusy, herbal and floral gins

London Essence Grapefruit & Rosemary Tonic

herbaceous, subtle quinine with zesty citrus
enjoy with floral, luscious and berry forward gins

London Essence Blood Orange & Elderflower

honeyed, zesty & fresh, with tangy blood orange
enjoy with citrusy, herbal and grassy gins

Thomas Henry Pink Grapefruit

sharp, refreshing with zesty grapefruit
enjoy with spiced, luscious and floral gins

East Imperial Soda Water

zero quinine, ideal for letting the botanicals shine
enjoy with citrusy, floral and spiced gins

tonic to pair with your choice of gin

add 3.5

LONDON DRY

The archetypal style of gin. The most traditional and what most people know as Gin. Legally defined by production technique: a distilled gin with real botanicals and nothing added after distillation. Actually, it does not have to be made in London and usually has more prominent juniper representation.

CITRUS

BRIGHT, ZINGY, REFRESHING

AUSTRALIA

- ◇ McHenry Classic Dry Gin, 40% 26
orange peel, cardamom, star anise
- ◇ Settler's Rare Dry Gin, 43% 22
muntries, orange, lemon myrtle
- ◇ Stone Pine Distillery Original Dry Gin, 40% 28
lemon myrtle, pink finger lime, orange

AUSTRIA

- ◇ J.A. Baczewski Dry Gin, 43.5% 22
aniseed, dill, ginger
- ◇ The Good Gin, 47.4% 30
orange zest, turmeric, raw cacao

BELGIUM

- ◇ Filliers Classic Dry Gin 28, 46% 32
hops, allspice, fresh orange
- ◇ Filliers Dry Gin 28 Tangerine Seasonal Edition, 43.7% 36
tangerine, allspice, hops
- ◇ Gillemore Magical Gin, 46% 38
grains of paradise, cubeb, orange peel

ENGLAND

- ◇ 6 O'Clock Gin, 43% 26
elderflower, winter savory, orange peel
- ◇ Ampersand Gin, 40% 26
orange peel, lemon peel, cubeb
- ◇ Bankes Gin, 43% 26
coriander, orange peel, lemon peel
- ◇ Bath Gin, 40% 28
cassia, wormwood, kaffir lime leaf
- ◇ Bayswater Gin, 43% 28
liquorice, nutmeg, orange peel
- ◇ Bedrock Gin, 40% 28
lemon peel, orange peel, cinnamon
- Beefeater 24 Gin, 45% 22
sencha, chinese green tea, grapefruit rind
- Beefeater London Dry Gin, 40% 20
almonds, orris root, seville oranges

- Bombay Sapphire Premier Cru Gin, 47% 22
murcian lemon, mandarin orange, sweet orange
- ◇ Boxer Gin, 40% 26
bergamot peel, nutmeg, cinnamon
- ◇ Brennen & Brown Colonial Gin, 43% 26
liquorice, orange peel, lemon peel
- ◇ British Polo Gin No.3, 42.7% 28
elderflower, vanilla, lemon peel
- Broker's Gin 40%, 40% 20
lemon peel, nutmeg, orange peel
- Burleighs London Dry Gin, 40% 22
silver birch, dandelion, elderberry
- Chase Williams Elegant Gin, 48% 24
bramley apple, angelica, lemon peel
- ◇ Connaught Bar Gin, 44% 46
bordeaux wine, nutmeg, lemon peel
- ◇ Curio Rock Sapphire Gin, 41% 26
rock sapphire, seaweed, lime flower tea
- ◇ Dr. J's Gin, 45% 28
coriander, orange zest, macadamia nut
- East London Liquor Co. Dry Gin, 40% 22
lemon peel, grapefruit peel, cardamom
- ◇ Fifty Pounds Gin, 43.5% 28
savory, nutmeg, lemon peel
- Fords Gin, 45% 20
angelica, jasmine, cassia
- ◇ Foxdenton Estate London Dry Gin, 48% 26
lime flower oil, orris root, coriander
- ◇ Gin Kitchen Dancing Dragontail Summer Gin, 48% 28
green cardamom, pink grapefruit, juniper
- ◇ Greenall's London Dry Gin, 37.5% 22
liquorice, lemon peel, coriander
- Hayman's London Dry Gin, 40% 20
nutmeg, lemon peel, orange peel
- ◇ HYKE Gin, 40% 24
lemon zest, rooibos, myrrh
- ◇ Keepr's 1606 Gin, 43% 38
lemon peel, orange peel, angelica
- ◇ King of Soho Gin, 42% 22
grapefruit peel, angelica, cassia

LONDON DRY - CITRUS

Kokoro Gin, 42%	22	◇ Vryheid Gin, 44%	28
<i>sansho berries, almond, liquorice</i>		<i>sweet lemon rind, oak, orange blossom honey</i>	
◇ Little Bird London Dry Gin, 41.6%	22	◇ Weetwood Gin, 42%	26
<i>pink grapefruit, sweet orange peel, ginger</i>		<i>blackcurrants, bitter orange peel, sweet orange peel</i>	
◇ London 40 Gin, 40%	22	Whitley Neill Dry Gin, 42%	22
<i>almond, nutmeg, angelica</i>		<i>baobab fruit, cape gooseberries, orange peel</i>	
◇ London Hill Dry Gin, 40%	20	Widges London Dry Gin, 41%	18
<i>lemon peel, sweet orange peel, coriander</i>		<i>cardamom, orange peel, coriander</i>	
◇ Lord Astor London Dry Gin, 42%	22	GERMANY	
<i>cassia, lemon peel, orange peel</i>		◇ Berliner Brandstifter Berlin Dry Gin, 43.3%	32
◇ Manchester Gin, 42%	24	<i>woodruff, cucumber, malva</i>	
<i>dandelion, burdock, liquorice</i>		◇ Brick Gin, 40%	26
◇ Marks & Spencer No. 02 Zesty Gin, 41.6%	22	<i>juniper, lemon peel, cubeb</i>	
<i>orange peel, liquorice, angelica</i>		◇ Steinhauser See Gin, 48%	28
◇ Masons Dry Yorkshire Gin, 42%	26	<i>balm, lemongrass, lemon pepper</i>	
<i>cardamom, fennel seed, fresh lime peel</i>		◇ Sul Gin, 43%	28
No. 3 London Dry Gin, 46%	24	<i>rockrose, allspice, lemon peel</i>	
<i>orange peel, angelica, grapefruit peel</i>		◇ The Duke Munich Dry Gin, 45%	28
◇ Old Bakery Gin, 41.7%	28	<i>orange blossom, cubeb, ginger</i>	
<i>coriander, grapefruit peel, liquorice</i>		◇ Van Laack Dry Gin, 42%	38
◇ Palmer's 44 London Dry Gin, 44%	22	<i>juniper</i>	
<i>grapefruit peel, angelica, cassia</i>		INDIA	
◇ Pink 47 Gin, 47%	22	Greater Than Gin, 40%	22
<i>almond, nutmeg, angelica</i>		<i>chamomile, ginger, orange peel</i>	
◇ Portobello Road No.171 London Dry Gin, 42%	22	IRELAND	
<i>bitter orange peel, lemon peel, nutmeg</i>		◇ Echlinville Single Estate Irish Pot Still Gin, 46%	32
◇ Rathbone New London Dry Gin, 40%	22	<i>elderflower, lemon peel, sweet kelp seaweed</i>	
<i>lemon peel, juniper, coriander</i>		◇ Feckin Irish Gin, 40%	26
◇ Rokeby's Half Crown London Dry Gin, 40.6%	22	<i>fresh lemon, cassia, angelica</i>	
<i>juniper, lemon peel, coriander</i>		◇ Jawbox Gin, 43%	22
◇ Salcombe First Bottling Limited Edition Gin, 44%	36	<i>cardamom, lemon peel, liquorice</i>	
<i>cubeb berry, lime peel, fresh grapefruit</i>		ITALY	
◇ Scout & Sage London Dry Gin, 40%	26	◇ Family of Hounds, 42%	24
<i>seville orange, lemon, pink pepper</i>		<i>lavender, orange peel, pink grapefruit</i>	
Sipsmith London Dry Gin, 41.6%	24	Milano Giass Dry Gin, 42%	30
<i>liquorice, coriander, angelica</i>		<i>melissa leaf, golden apple, hibiscus</i>	
◇ Sis4ers Signature Dry Gin, 40%	26	◇ Occitan London Dry Gin, 42%	22
<i>mastic, lemon, orange</i>		<i>cardamom, orange peel, lemon peel</i>	
SoulSisters Melaka Edition Gin, 40%	22	NETHERLANDS	
<i>candlenut, torch ginger, pomelo</i>		◇ Goodmans Gin, 44%	22
◇ SW4 London Dry Gin, 40%	22	<i>cardamom, liquorice, grains of paradise</i>	
<i>orris powder, lemon peel, cassia</i>		◇ Three Corner Dry Gin, 42%	28
◇ That Boutique-y Miyagawa Citrus Gin, 46%	32	<i>juniper, lemon zest</i>	
<i>miyagawa, lime, douglas fir</i>		NEW ZEALAND	
◇ The Sting London Dry Gin, 40%	24	◇ Blenheim Bay Gin, 42.5%	26
<i>cinnamon, lemon peel, orange peel</i>		<i>hyssop, bitter orange peel, sweet orange peel</i>	
◇ The Sweet Potato Spirit Co. London Dry Gin, 45%	32	Denzien Our Coast Gin, 40%	30
<i>lemon zest, cardamom, juniper</i>		<i>sea salt, kelp, wormwood</i>	
◇ The Tottering Sharpener Gin, 45%	26	◇ Juno Gin, 40%	26
<i>coriander, lemon peel, lime flower</i>		<i>kaffir lime leaf, green cardamom, manuka</i>	
◇ Trevethan Cornish Gin, 43%	28		
<i>elderflower, gorse, lemon peel</i>			

LONDON DRY - FLORAL

◇ Gin Lane 1751 London Dry Gin, 40%	26	◇ Driftwood Donkey Jack Gin, 45%	30
<i>star anise, coriander, bitters</i>		<i>angelica, sweet orange peel, lemon zest</i>	
◇ Hammer & Son Geranium Gin, 44%	22	◇ Nolet's Silver Dry Gin, 47.6%	30
<i>geranium, angelica, lemon peel</i>		<i>rose, white peach, orris</i>	
◇ Hidden Curiosities Gin, 42%	30	NEW ZEALAND	
<i>yuzu, pink pepper, lavender</i>		◇ Reid + Reid Rev Dawson's Gin, 42%	26
◇ Knockeen Hills Heather Gin, 47.3%	24	<i>fresh orange peel, fennel seed, liquorice</i>	
<i>heather, angelica, savory</i>		SCOTLAND	
◇ Liverpool Complex Organic Gin, 43%	28	◇ Blackwoods 2012 Vintage 40% Gin, 40%	28
<i>coriander, cardamom, cassia</i>		<i>wild water mint, sea pink, angelica</i>	
◇ Mayfair Dry Gin, 40%	26	◇ Crossbill Small Batch Highland Dry Gin, 43.8%	28
<i>angelica, coriander, orris powder</i>		<i>rosehip, juniper</i>	
◇ Military Spirit Gin, 43%	26	◇ Darnley's View Gin, 40%	24
<i>lime flower, gorse, heather</i>		<i>elderflower, lemon peel, coriander</i>	
◇ Neat Gin, 40%	28	◇ Fidra Gin, 42%	28
<i>cardamom, angelica, cassia</i>		<i>rosehip, sea buckthorn, lemon thyme</i>	
◇ Stratford Gin, 45%	36	◇ Gorse Gin, 43.1%	26
<i>rose, lemon balm, lovage</i>		<i>gorse, elderflower, chamomile</i>	
◇ Swordsman London Dry Gin, 40%	22	◇ Hills & Harbour Gin, 40%	26
<i>coriander, savory, angelica</i>		<i>seaweed, noble fir, mango</i>	
◇ Ten Tor Seasonal Spring Gin, 42%	28	◇ Inshriach Original Gin, 43%	26
<i>hyssop, star anise, scots pine needle</i>		<i>douglas fir, rosehip, juniper</i>	
◇ That Boutique-y Expeditionary Gin, 44.5%	32	◇ Kintyre Gin, 43%	26
<i>lavender, mint, grains of paradise</i>		<i>lemon peel, bitter orange, sorrel</i>	
◇ That Boutique-y Monastic Gin, 40%	28	◇ Kirkjuvagr Orkney Gin, 43%	26
<i>quince, rosehip, coriander</i>		<i>ramanas rose, borage flower, angelica</i>	
◇ The Corinthian London Dry Gin, 40%	24	◇ Lussa Gin, 42%	34
<i>lemon balm, cubeb, lime flower</i>		<i>sea lettuce, pine, water mint</i>	
◇ The Lakes Explorer Edition Gin, 47.1%	26	◇ Rock Rose Gin, 41.5%	22
<i>bilberry, heather, meadowsweet</i>		<i>hodiola rose, rowanberry, sea buckthorn</i>	
◇ Wardington's Ludlow Dry Gin, 42%	26	Rock Rose Winter Gin, 41.5%	24
<i>gorse, lemon peel, orange peel</i>		<i>spruce tips, rhodiola rose, juniper</i>	
◇ Willem Barentsz Premium Gin, 43%	24	Shetland Reel Ocean Sent Gin, 49%	24
<i>jasmine, coriander, liquorice</i>		<i>seaweed, coriander, apple mint</i>	
GERMANY		Tanqueray Gin, 43.1%	20
◇ Monkey 47 Gin, 47%	24	<i>liquorice, angelica, coriander</i>	
<i>pomelo, lemon balm, jasmine</i>		The Botanist Gin, 46%	22
◇ Niemand Dry Gin, 46%	32	<i>mugwort, meadowsweet, lady's bedstraw flower</i>	
<i>rosemary, sandalwood, vanilla</i>		SPAIN	
◇ Triple Peak London Dry Gin, 44%	32	◇ 5th Water Floral Gin, 42%	28
<i>elderberry, sea buckthorn, rosehip</i>		<i>rose petal, violet petal, juniper</i>	
GREECE		◇ No. 0 London Dry Gin, 40.8%	22
◇ Old Sport Gin, 42%	20	<i>cinchona bark, cinnamon, iris</i>	
<i>mastic, bitter orange peel, cinnamon</i>		◇ Siderit Hibiscus Gin, 43%	36
IRELAND		<i>hibiscus, mountain ironwort, pink pepper</i>	
◇ Ha'Penny Gin, 41%	28	USA	
<i>rhubarb, lavender, dandelion</i>		◇ Greenhook Ginsmiths Gin, 47%	24
◇ The Exiles Irish Gin, 41.3%	26	<i>elderflower, cinnamon, chamomile</i>	
<i>shamrock, lemon zest, black pepper</i>		WALES	
NETHERLANDS		◇ Eccentric London Dry Gin, 42%	26
◇ Bobby's Schiedam Dry Gin, 42%	24	<i>meadowsweet, liquorice, lemon peel</i>	
<i>lemongrass, cubeb, rosehip</i>			

HERBAL
FRESH BUNCH, DRIED LEAVES, VEGETAL

AUSTRALIA			
◇ Archie Rose Signature Dry Gin, 42%	26		
<i>pepperleaf, river mint, lemon myrtle</i>			
◇ Kis O Gin, 43.5%	34		
<i>wild rosemary, angelica, coriander</i>			
◇ Loch Distillery Small Batch Gin, 41%	22		
<i>star anise, nutmeg, ginger</i>			
BELGIUM			
◇ Cockney's Gin, 44.2%	28		
<i>grapefruit, grains of paradise, coriander</i>			
CROATIA			
◇ Old Pilots Gin, 45%	38		
<i>olive leaf, sage, bitter orange peel</i>			
ENGLAND			
7 Dials London Dry Gin, 46%	26		
<i>coriander, lavender, almond</i>			
◇ Anno Kent Dry Gin, 43%	26		
<i>lavender, lemon peel, black pepper</i>			
◇ Berkeley Square Gin, 46%	46		
<i>basil, lavender, kaffir lime leaf</i>			
Bombay Original Dry Gin, 37.5%	20		
<i>angelica, liquorice, lemon peel</i>			
Bombay Sapphire East Gin, 42%	26		
<i>black pepper, lemongrass, almond</i>			
Boodles British Gin, 40%	22		
<i>nutmeg, rosemary, sage</i>			
◇ Brighton Gin, 40%	26		
<i>angelica, lime peel, milk thistle</i>			
◇ Burleighs Leicester Dry Gin, 40%	30		
<i>thyme, sage, nutmeg</i>			
◇ Cambridge Dry Gin, 42%	26		
<i>lemon verbena, rose petal, basil</i>			
◇ Chilgrove Dry Gin, 44%	24		
<i>mint, savory, fresh lime</i>			
◇ City of London Christopher Wren Gin No.2, 45.3%	28		
<i>liquorice, angelica, nutmeg</i>			
◇ City of London Square Mile Gin, 47.3%	28		
<i>lemon peel, orange peel, grapefruit peel</i>			
◇ Conker Spirits Dorset Dry Gin, 40%	28		
<i>elderberry, lime peel, gorse flower</i>			
◇ Cooper King Valour Dry Gin, 40%	26		
<i>lemongrass, basil, honey</i>			
◇ Dockyard Gin, 41.2%	30		
<i>elderflower, orris root, grains of paradise</i>			
East London Liquor Co. Batch No. 2 Gin, 47%	24		
<i>bay leaf, thyme, fennel seed</i>			
Fishers Gin, 44%	28		
<i>spignel, bog myrtle, rock samphire</i>			
◇ Four Feathers London Dry Gin, 40%	24		
<i>basil, thyme, gorse flower</i>			
Kew Organic Gin, 46%	24		
<i>galangal, passion flower, lavender</i>			
◇ Masons Dry Yorkshire Lavender Edition Gin, 42%	24		
<i>lavender, fennel seed, fresh lime peel</i>			
◇ MEWS Gin, 38%	22		
<i>pink pepper, cassia, lavender</i>			
Mombasa Club Colonel's Reserve Gin, 43.5%	26		
<i>caraway seed, clove, cumin</i>			
Mombasa Club Gin, 41.5%	22		
<i>angelica, clove, cumin</i>			
Pothecary Gin, 44.8%	30		
<i>lavender, tilia flower, lemon peel</i>			
◇ Plymouth Old Presentation Bottle Gin, 41.2%	26		
<i>liquorice, angelica, sweet orange peel</i>			
◇ Renegade Gin, 42%	24		
<i>grains of paradise, cardamom, angelica</i>			
◇ Tarquins Handcrafted Cornish Gin, 42%	24		
<i>violets, orange zest, angelica</i>			
◇ That Boutique-y Botanical Democracy Gin, 46.2%	34		
<i>lime, fennel seed, coriander</i>			
◇ The Distillery King Theodore of Corsica Gin, 42%	32		
<i>bergamot, basil, sea salt</i>			
◇ The Distillery MOS Blend Gin, 40%	30		
<i>wormwood, fennel seed, grains of paradise</i>			
◇ The Distillery Super Dry Gin, 42%	32		
<i>gentian root, rooibos, lemon peel</i>			
◇ The Original Barber's Gin, 40%	24		
<i>coriander, thyme, angelica</i>			
◇ The Whitby Gin, 42%	24		
<i>sugar kelp, moors honey, coriander</i>			
◇ Thomas Dakin Gin, 42%	24		
<i>horseradish, sweet orange peel, cubeb</i>			
◇ Thunderflower Gin, 42%	26		
<i>sage, elderflower, liquorice</i>			
◇ Twisting Spirits Earl Grey Gin, 41.5%	26		
<i>earl grey, cardamom, cubeb</i>			
◇ Woodhill Gin, 41.7%	42		
<i>pink pepper, lemongrass, rosebud</i>			
FRANCE			
◇ BR Essential London Dry Gin, 40%	36		
<i>allspice, thyme, jamaican pepper</i>			
GERMANY			
◇ Diamond London Dry Gin, 45%	22		
<i>juniper</i>			
◇ Lebensstern London Dry Gin, 43%	24		
<i>black pepper, orange zest, elderflower</i>			
◇ The Duke Rough Gin, 42%	26		
<i>coriander, orange peel, hops</i>			

LONDON DRY - HERBAL . SPICED

IRELAND

- ◊ An Dulaman Irish Martime Gin, 43.2% 28
sugar kelp, moss, dulce seaweed
- Glendalough Wild Botanical Gin, 41% 28
liquorice, elderflower, watermint

ITALY

- ◊ Berto Distilled Dry Gin, 43% 24
wormwood, rosemary, iris
- Luxardo London Dry Gin, 43% 20
cinchona, bitter orange, iris
- Sabatini Gin, 41.3% 24
thyme, sage, lavender
- Vallombrosa Gin, 47% 22
juniper
- ◊ VII Hills Gin, 43% 26
pomegranate, rosehip, celery
- ◊ Winestillery London Dry Gin, 42% 30
menthol, lemon peel, orange peel

NETHERLANDS

- ◊ Feller Gin, 40% 26
blood orange peel, juniper, coriander
- ◊ Sloane's Dry Gin, 40% 22
vanilla, liquorice, orris
- ◊ V2C Dutch Dry Gin, 41.5% 26
laurel, st. john's wort, angelica

NORWAY

- ◊ Vidda Tørr Gin, 43% 26
heather, yarrow, chamomile

SCOTLAND

- ◊ Achroous Gin, 41% 28
sichuan pepper, fennel seed, coriander
- ◊ Avva Scottish Gin, 43% 28
red clover, lime peel, mint
- ◊ Edinburgh Seaside Gin, 43% 26
scurvy grass, ground ivy, cardamom
- ◊ Gilt Gin, 40% 30
liquorice, cardamom, orris root
- ◊ Ginerosity Gin, 40% 28
heather, clove, cinnamon
- ◊ King's Hill Gin, 44% 26
liquorice, elderflower, gorse
- ◊ Lin Gin, 43% 26
meadowsweet, lemon peel, heather
- ◊ Persie Herby & Aromatic Gin, 40% 24
rosemary, basil, green olive
- ◊ Pickering's Original 1947 Gin, 42% 22
fennel seed, anise, clove
- Rock Rose Mey Selections Gin, 41.5% 26
applemint, rowanberry, sweet cicely
- ◊ Sea Glass Gin, 43% 24
liquorice, sweet cicely, applemint

- Stirling Gin, 43% 22
basil, nettle, orange peel

- ◊ Tanqueray Bloomsbury Gin, 47.3% 28
coriander, liquorice, winter savory

- ◊ Tanqueray Lovage Gin, 47% 30
lovage, liquorice, angelica

SOUTH AFRICA

- ◊ Stretton's London Dry Gin, 43% 22
sugar cane, angelica, juniper

SPAIN

- ◊ 5th Air Black Gin, 40% 28
algae, juniper, coriander

- ◊ Macaronesian White Gin, 40% 24
cardamom, orange peel, liquorice

- ◊ NUT London Dry Gin, 45% 22
thyme, green walnut, olive leaf

- ◊ Platinum TV Gin, 43% 22
bitter almond, cassia, ginger

- ◊ Siderit London Dry Gin, 43% 36
rock tea, hibiscus, pink pepper

- ◊ The Botanical's Premium London Dry Gin, 42.5% 28
mango, buddha's hand, thyme

SWITZERLAND

- ◊ Bonifaz Dry Gin, 41% 38
juniper

- ◊ Gin 27 Premium Appenzeller Dry Gin, 43% 28
coriander, orange peel, cardamom

USA

- ◊ Death's Door Gin, 47% 28
fennel seed, coriander, juniper

- New Deal 33 Gin, 46% 22
juniper, coriander, cardamom

- ◊ Vim & Petal Gin, 42% 22
grapefruit, bergamot, tarragon

WALES

- ◊ Da Mhile Farmhouse Botanical Organic Gin, 42% 24
rose, fennel seed, star anise



AUSTRALIA

- ◊ Moore's Australian Dry Gin, 40% 22
cinnamon myrtle, macadamia nut, illawarra plum

AUSTRIA

- Farthofer Organic Premium Gin, 40% 24
javanese pepper, orange rind, lavender

BELGIUM

- ◊ Biercee Thesis & Antithesis Gin, 44% 38
hops, poppy, cocoa

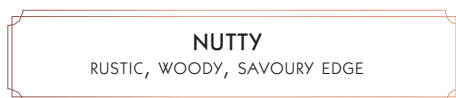
◇ Filliers Pine Blossom Dry Gin 28, 43.7%	36		
<i>pine blossom, juniper, vanilla</i>			
ENGLAND			
◇ Batch Premium Gin, 40%	28		
<i>frankincense, myrrh, allspice</i>			
◇ Bimber London Dry Gin, 42%	36		
<i>cinnamon, nutmeg, coriander</i>			
Bulldog Gin, 40%	22		
<i>dragon eye, poppy, lotus leaves</i>			
Cotswolds Gin, 46%	24		
<i>black pepper, lavender, grapefruit zest</i>			
◇ Fifty Eight Gin, 43%	26		
<i>vanilla, pink grapefruit, bergamot</i>			
◇ Ginger Ninja Gingery Gin, 42%	26		
<i>ginger, liquorice, black pepper</i>			
◇ GOA Gin, 47%	26		
<i>caraway, cardamom, nutmeg</i>			
◇ Juniper Green Trophy Gin, 43%	22		
<i>summer savory, angelica root, coriander</i>			
Opihr Oriental Spiced Gin, 40%	24		
<i>cardamom, grapefruit peel, cubeb</i>			
◇ Salcombe Start Point Gin, 44%	26		
<i>cubeb berry, lime peel, fresh grapefruit</i>			
◇ Speakeasy Turkey Trot Gin, 44%	26		
<i>raisins, cinnamon, clove</i>			
◇ St. Giles Gin, 42%	30		
<i>lemongrass, black pepper, pink pepper</i>			
◇ The East India Company London Dry Gin, 42%	26		
<i>galangal, sweet orange peel, cardamom</i>			
◇ The Gin Kitchen Gutsy Monkey Winter Gin, 48%	28		
<i>black pepper, allspice, ginger</i>			
◇ Warner Edwards Harrington Dry Gin, 44%	26		
<i>green cardamom, black pepper, cinnamon</i>			
◇ Whittaker's Gin, 42%	22		
<i>thyme, bog myrtle, coriander</i>			
FRANCE			
◇ Jin Dea Gin, 40%	26		
<i>darjeeling, cardamom, ginger</i>			
◇ Magellan Gin, 41.3%	28		
<i>iris flower, clove, cinnamon</i>			
GERMANY			
Elephant Gin, 45%	24		
<i>pimento berries, devil's claw, buchu</i>			
◇ Goldberner Gin, 45%	30		
<i>cardamom, angelica, bitter orange peel</i>			
◇ Luum London Dry Gin, 40%	30		
<i>almond, coriander, angelica</i>			
◇ Six Ravens London Dry, 46%	26		
<i>coriander, lemon peel, ginger</i>			
		NETHERLANDS	
		◇ Driftwood Chow Hound Gin, 44%	28
		<i>cinnamon, cardamom, nutmeg</i>	
		◇ Sylvius Gin, 45%	24
		<i>star anise, cinnamon, caraway</i>	
		NEW ZEALAND	
		Dancing Sands Dry Gin, 44%	22
		<i>peppercorn, angelica, coriander</i>	
		◇ Reid + Reid Native Gin, 42%	26
		<i>kawakawa, manuka, horopito</i>	
		Scapegrace Dry Gin, 42.2%	20
		<i>cinnamon, nutmeg, clove</i>	
		SCOTLAND	
		◇ Darnley's View Spiced Gin, 42.7%	26
		<i>ginger, cumin, clove</i>	
		◇ Devil's Staircase Gin, 42%	26
		<i>nutmeg, coriander, cardamom</i>	
		◇ Edinburgh Gin, 43%	24
		<i>heather, milk thistle, pine</i>	
		SPAIN	
		◇ Jodhpur Gin, 43%	22
		<i>ginger, grapefruit peel, bitter almond</i>	
		SINGAPORE	
		Singa Gin, 43%	20
		<i>grains of paradise, sarawak pepper, cassia cinnamon</i>	
		SRI LANKA	
		Colombo No. 7 Gin, 43.1%	20
		<i>cinnamon, curry leaves, ginger</i>	
		SINGAPORE	
		Merlion Gin, 43%	20
		<i>grains of paradise, sarawak pepper, cassia</i>	
		SWEDEN	
		◇ ND Mountain Dry Gin, 43.5%	36
		<i>timut pepper, angelica, birch leaf</i>	
		USA	
		◇ J. Rieger Midwestern Dry Gin, 46.1%	22
		<i>coriander, liquorice, orange peel</i>	
		◇ Knickerbocker Gin, 42.5%	24
		<i>fennel seed, clove, nutmeg</i>	
		LUSCIOUS DELICATE, VELVETY SWEETENED, SCRUMPTIOUS	
		ENGLAND	
		◇ Blue Bottle Artisan Dry Gin, 47%	30
		<i>vanilla, cubeb, nutmeg</i>	
		◇ Maiden Maidstone Gin, 42%	24
		<i>marshmallow, meadowsweet, liquorice</i>	

LONDON DRY - LUSCIOUS . NUTTY . EARTHY

- ◇ Manchester Three Rivers Gin, 40% 22
oat, vanilla, cardamom
- ◇ Sir Robin of Locksley Gin, 40.5% 24
pink grapefruit, dandelion, elderflower

SCOTLAND

- Caorunn Scottish Gin, 41.8% 22
coul blush apple, heather, dandelion
- ◇ Eden Mill Original Gin, 42% 26
sea buckthorn, lemon balm, orange peel
- ◇ Nerabus Islay Gin, 42% 26
heather, pink grapefruit, coriander
- Rock Rose Spring Gin, 41.5% 24
coltsfoot, dandelion, gorse
- ◇ Hernö Dry Gin, 40.5% 30
lingonberry, meadowsweet, vanilla

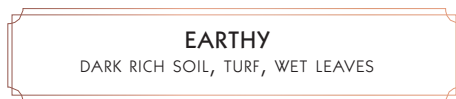


ENGLAND

- East London Liquor Co. Batch No.1 Gin, 45% 24
cubeb, darjeeling, grapefruit peel
- ◇ Greensand Ridge London Dry Gin, 40% 26
gorse, honey, cobnuts
- Langley's No. 8 Gin, 42% 20
nutmeg, sweet orange, cassia

SPAIN

- ◇ Vones London Dry Gin, 40% 24
cinnamon, nutmeg, chestnut



AUSTRALIA

- ◇ Blind Tiger Organic Gin, 42.7% 30
coriander, angelica, summer savory
- Giniversity London Dry Gin, 40% 22
meen, coriander, orange peel
- Never Never Triple Juniper Gin, 43% 24
juniper, peppercorn, cinnamon
- ◇ Patient Wolf Premium Dry Gin, 41.5% 36
fresh ruby grapefruit, tonka bean, cardamom

ENGLAND

- ◇ 1897 Quinine Gin, 45.8% 30
cinchona bark, lemon peel, grapefruit peel
- Burleighs Export Strength Gin, 47% 28
silver birch, dandelion, elderberry
- ◇ Caspyn Cornish Dry Gin, 40% 24
lemon verbena, japanese tea, hibiscus
- Cremorne Colonel Fox's Gin, 40% 22
liquorice, angelica, bitter orange peel

- ◇ Gilpin's Westmorland Extra Dry Gin, 47% 28
borage, sage, angelica

- ◇ Gin Lane 1751 Royal Strength Gin, 47% 26
cassia, star anise, sicilian lemon

- ◇ Ish Gin, 41% 24
almond, nutmeg, double juniper

- Cambridge Japanese Gin, 42% 32
shiso leaf, yuzu, sansho

- ◇ KURO Gin, 43% 26
silver birch bark, charcoal, spruce

- ◇ Langtons No 1 Gin, 40% 22
oak bark, lemon peel, orange peel

- Plymouth Gin, 41.2% 22
liquorice, angelica, sweet orange peel

- ◇ Two Birds London Dry Gin, 40% 24
orris root, juniper, coriander

FRANCE

- ◇ Diplome Gin, 44% 26
saffron, fennel seed, whole lemon

GERMANY

- ◇ Hoos London Gin, 44.4% 30
pine, fennel seed, cardamom

- ◇ Wild Child Gin, 43.5% 28
rosemary, lemon, bergamot

NETHERLANDS

- ◇ Zuidam Dutch Courage Dry Gin, 44.5% 24
angelica, coriander, vanilla

SCOTLAND

- ◇ Colonsay Gin, 47% 32
calamus root, coriander, orange peel

- ◇ Esker Gin, 42% 28
silver birch sap, heather, nettle

- ◇ Granite North Gin, 41.9% 26
fir needles, lemon pith, pine

- ◇ Loch Ness Legends Gin, 43.3% 26
heather, hawthorn berry, silver birch sap

- ◇ Makar Glasgow Gin, 43% 22
black pepper, rosemary, coriander

- ◇ McQueen Signature Dry Gin, 42% 26
lime, coriander, cassia

SOUTH AFRICA

- ◇ Pienaar & Son Empire Gin, 43% 26
juniper, angelica, pine nuts

WALES

- Brecon Botanicals Gin, 43% 24
orange peel, saffron, cinnamon

GRASSY

GREENNESS, TALL GRASS, MEADOW

- ENGLAND**
- ◇ Beckett's London Dry Gin, 40% 28
mint, lime, sweet orange peel
 - ◇ Bullards Norwich Dry Gin, 42.5% 26
tonka bean, cardamom, lemon peel
 - ◇ Durham Gin, 40% 22
celery seed, pink pepper, elderflower
 - ◇ Elemental Cornish Gin, 42% 26
orris root, cassia, coriander
 - ◇ Faith & Sons Gin, 42.2% 32
lemon verbena, liquorice, mandarin peel
 - ◇ Forest (Bond) Gin, 42% 32
moss, liquorice, cinnamon
 - ◇ Hedgerow Gin, 42% 26
meadow hay, crab apple, nettle
 - ◇ Poetic License Northern Dry Gin, 43.2% 24
cardamom, cubeb, dried lime
 - ◇ Ten Tor Seasonal Autumn Gin, 42% 28
rosehip, hawthorn berry, blackberry
 - ◇ Twisting Spirits Douglas-Fir Gin, 41.5% 26
douglas fir needles, cardamom, sarsaparilla root
- GERMANY**
- Skin Gin, 42% 30
mint, lime peel, grapefruit peel
 - Skin Gin Christmas Blue 2017, 42% 32
grapefruit peel, coriander, mint
 - Woodland Sauerland Dry Gin, 45.3% 26
sorrel, dandelion root, spruce tips
- NETHERLANDS**
- Black Tomato Gin, 42.3% 26
black tomato, salt, citrus
- NEW ZEALAND**
- Denzien Te Aro Dry Gin, 42% 30
horopito, fennel, kawakawa
- SOUTH AFRICA**
- A Mari Atlantic Ocean Gin, 43% 38
allspice, fynbos, tangerine
- SPAIN**
- ◇ Ginraw Gin, 42.3% 26
kaffir lime leaf, laurel, bay leaf
- USA**
- ◇ Greylock Gin, 40% 22
cinnamon, orange peel, angelica
- WALES**
- ◇ Pollination Gin, 45% 28
gorse, heather, hawthorn

BERRIES

PLUMP, ROUNDNESS, JAMMY

- ENGLAND**
- ◇ Stonewall London Dry Gin, 40% 26
sea buckthorn, almond, blueberry
- SPAIN**
- ◇ 5th Fire Red Fruits Gin, 42% 28
blueberry, raspberry, blackberry
- FRUITY**
EXOTIC, AUDACIOUS, NOT FRUIT FLAVOURED
- ENGLAND**
- ◇ Juni 93 London Dry Gin, 42.5% 26
cornelian cherry, elderberry, lime peel
 - ◇ Leeds Gin, 40% 24
rhubarb, ginger, coriander
 - Oxley Gin, 47% 26
lemon zest, orange zest, grapefruit zest
- SCOTLAND**
- ◇ Caithness Highland Gin, 40% 26
orange peel, lime peel, rhubarb
 - ◇ Eenoo Gin, 43% 26
honey, heather, raspberry
 - ◇ Kinrara Highland Dry Gin, 41.5% 26
rosehip, rowanberry, orange peel

MODERN

We define (loosely, admittedly) modern gin as one that doesn't fit the juniper-forward London Dry Gin style. Gins that celebrate or highlight an abundance of botanicals, or have an emphasis on fruit or spice, or gins that champion location or technique.

CITRUS

BRIGHT, ZINGY, REFRESHING

AUSTRALIA

- ◇ 1832 Wolgan Gin, 40% 36
finger lime, lemon-scented tea tree, liquorice
- ◇ Antipodes Gin, 45% 34
sweet orange peel, lemon oil, pepperberry
- ◇ Archie Rose Summer Gin Project Coast Gin, 40% 32
strawberry gum, sea lettuce, lemon myrtle
- ◇ Bass & Flinders Soft and Smooth Gin, 40% 34
lime zest, coriander, pepperberry
- ◇ Fossey's Original Gin Elixir, 40% 36
tangelo, lemon myrtle, bergamot
- Four Pillars Rare Dry Gin, 41.8% 20
lemon myrtle, pepperberry leaf, fresh orange
- ◇ Four Pillars X Hernö Gin, 42.8% 28
rivermint, spearmint, strawberry gum
- Giniversity Botanical Gin, 42% 24
sandalwood, eucalyptus, lemon myrtle
- ◇ Great Southern Dry Gin, 40% 26
meen, cinnamon, fresh lemon
- ◇ Honcho Gin, 40% 26
lemon, lime, juniper
- ◇ Hurdle Creek Still Yardarm Gin, 42% 36
lemon myrtle, pink pepper, hop flower
- ◇ Lark Tasmanian Pepperberry Gin, 40% 24
pepperberry, lemon peel, ginger
- Manly Spirits Coastal Citrus, 43% 28
lemon aspen, meyer lemon, sea parsley
- ◇ Noosa Heads Fortune Signature Gin, 41% 32
lemon peel, honeydew, green tea
- Old Young's 1829 Gin, 45% 24
liquorice, lemon myrtle, aniseed
- Prohibition Gin, 42% 24
lavender, pink pepper, blood orange
- Seven Zero Eight Gin, 43% 24
thyme, cardamom, finger lime
- ◇ Tamborine Mountain Distillery Lilly Pilly Gin, 40% 24
riberry, anise, orange peel
- ◇ Twenty Third St. Distillery Signature Gin, 40% 22
mandarin, fresh lime, coriander
- West Winds Sabre Gin, 40% 22
wattleseed, lemon peel, lemon myrtle
- BELGIUM**
- ◇ Copperhead Gin, 40% 26
coriander, orange peel, cardamom
- Forest Dry Winter Gin, 42% 24
cinnamon, grapefruit peel, angelica
- ◇ Lindemans Premium Distilled Gin, 40% 34
cherry stone, cardamom, tailed pepper
- ◇ Ph. Collet's London Dry Gin, 46% 32
sweet orange peel, angelica, rosemary
- ◇ Uppercut Dry Gin, 49.6% 34
damiana leaf, strawberry leaf, liquorice
- BRAZIL**
- Amázzoni Gin, 42% 26
cacao, brazilian chestnut, water lily
- Amázzoni Rio Negro Gin, 42% 28
victoria regia, tangerine, brazil nut
- CAMBODIA**
- ◇ Mawsim Handcrafted Gin, 43% 28
battambang orange, passionfruit, kumquat
- ENGLAND**
- ◇ Ant Gin, 42% 30
black ant, clementine, granny smith apple
- Chase Seville Marmalade Gin, 40% 22
elderflower, bitter almond, liquorice
- ◇ Ish Limao Gin, 40% 24
lime oil, orange peel, lemon peel
- ◇ Jensen's Bermondsey Gin, 43% 22
almond, liquorice, angelica
- ◇ Lemon Grove Gin, 40% 24
fresh lemon, nutmeg, cassia
- ◇ Liverpool Small Batch Valencian Orange Gin, 46% 26
valencia orange, orange peel, liquorice

Martin Miller's Gin, 40%	22	Malfy Gin, 41%	22
<i>lemon peel, lime oil, juniper</i>		<i>orange peel, cassia, liquorice</i>	
◇ Mermaids Gin, 42%	28	Malfy Con Limone, 41%	22
<i>rock samphire, hops, grains of paradise</i>		<i>amalfi lemon, sicilian lemon, grapefruit</i>	
◇ Nelson's Gin, 42.5%	26	JAPAN	
<i>lemongrass, kaffir lime, vanilla</i>		◇ Ko-On IP 02, 45%	48
◇ Sacred Gin, 43.8%	24	<i>hetsuka bitter orange, yuzu, green tea</i>	
<i>cardamom, nutmeg, frankincense</i>		◇ Ohoro Standard Gin, 47%	24
◇ Silverback Mountain Strength Gin, 46%	36	<i>sweet gale, japanese mint, yuzu</i>	
<i>sweet orange peel, acacia blossom, lemongrass</i>		◇ Okinawa Gin Recipe 01, 47%	26
◇ Sipsmith Lemon Drizzle Gin, 40.4%	28	<i>guava leaf, goya, roselle</i>	
<i>dried lemon, lemon verbena, fresh lemon</i>		Sakurao Original Gin, 47%	24
◇ Steampunk Pirate Rascal Strength Gin, 45%	38	<i>dai dai, hinoki, shiso</i>	
<i>grapefruit zest, star anise, orange</i>		◇ Tokyo Nights Japanese Gin, 43%	26
That Boutique-y Moonshot Gin, 46.6%	34	<i>yuzu, matcha, coriander</i>	
<i>moonrock, bitter orange peel, chamomile flower</i>		Wa Bi Gin, 47%	24
◇ That Boutique-y World Gin Day Gin, 47.7%	34	<i>kumquat, shell ginger, saigon cinnamon leaf</i>	
<i>sea salt, coriander, angelica</i>		NETHERLANDS	
◇ The Lakes Pink Grapefruit Gin, 46%	24	Damrak Amsterdam Original Gin, 41.8%	20
<i>bitter orange, sweet orange, orris</i>		<i>aniseed, cinnamon, honeysuckle</i>	
◇ Worship Street Whistling Shop Cream Gin, 43.8%	26	◇ Hermit Gin, 43%	38
<i>cream, lemon zest, coriander</i>		<i>coriander, nutmeg, lemon zest</i>	
ESTONIA		◇ Otenba Gin, 40%	26
◇ Crafter's London Dry Gin, 43%	28	<i>pandan, lemongrass, sencha</i>	
<i>veronica, lemon peel, orange peel</i>		◇ Skully London Dry Gin, 41.8%	24
FRANCE		<i>orris, vanilla, citrus</i>	
◇ C'est Nous Gin, 40%	24	◇ Skully Oriental Citrus Gin, 41.8%	24
<i>apple essence, orange zest, lemon zest</i>		<i>yuzu, orange peel, vanilla</i>	
Citadelle Original Gin, 44%	22	◇ Skully Tangerine Twist Gin, 41.8%	24
<i>cardamom, orange peel, violet</i>		<i>chinese mandarin, sweet orange, bitter orange</i>	
◇ G.W Goodwynn Co. Classic Gin, 40%	23	NEW ZEALAND	
<i>cucumber, rose, coriander</i>		◇ Curiosity Recipe 23 Gin, 42%	30
Le Gin de Christian Drouin Gin, 42%	22	<i>manuka, orange zest, lavender</i>	
<i>vanilla, almond, rose</i>		◇ Vaione Pacific Gin, 40.2%	22
GERMANY		<i>fresh lime, fresh navel orange, green cardamom</i>	
◇ Clocker's Gin, 44%	28	PERU	
<i>orange peel, lemon peel, coriander</i>		GIN'CA Gin, 40%	24
◇ Clockers 3-a-gin St. Pauli Gin, 44%	42	<i>marigold, lemon verbena, tangelo</i>	
<i>bergamot, mandarin orange, quince</i>		PHILIPPINES	
◇ Friedrichs Dry Gin, 45%	26	ARC Botanical Gin, 45%	22
<i>rosemary, apple, jasmine</i>		<i>dalandan orange, pomelo, ylang-ylang</i>	
IRELAND		Crows Gin, 45%	26
◇ Drumshanbo Californian Orange Citrus Gin, 43%	22	<i>labuyo chilli pepper, pandan leaf, calamansi</i>	
<i>orange, vanilla, coriander</i>		PORTUGAL	
◇ Silver Spear Gin, 40%	26	◇ Sharish Dark Sky Gin, 40%	36
<i>fresh lime, coriander, cassia</i>		<i>lemon verbena, vanilla, coriander</i>	
ITALY		◇ Will's Premium Gin, 40%	28
◇ Boigin Distilled Gin, 40%	30	<i>lemon verbena, blackberry, elderflower</i>	
<i>everlasting flower, tangerine peel, orange peel</i>		SCOTLAND	
Bottega Bacur Gin, 40%	22	◇ GlenWyvis Limited Edition Gin, 40%	28
<i>sage, myrtle, lemon zest</i>		<i>orange, hawthorn, lemon</i>	

MODERN - CITRUS

◇ McQueen Sweet Citrus Gin, 42%	26	◇ Strane London Dry Merchant Strength Gin, 47.4%	36
<i>lemongrass, kaffir lime, grapefruit</i>		<i>garden mint, sage, basil</i>	
◇ Misty Isle Gin, 41.5%	26	◇ Wannborga Ö Gin, 40.1%	28
<i>black pepper, cassia, lemon peel</i>		<i>white pepper, coriander, juniper</i>	
Porter's Gin, 41.5%	22	USA	
<i>pink pepper, buddha's hand, cinnamon</i>		◇ Amass Dry Gin, 45%	24
◇ Shetland Reel Holly Days Gin, 43%	26	<i>hibiscus, cacao, lime leaf</i>	
<i>apple mint, orange peel, lemon peel</i>		◇ Berkshire Mountain Ethereal Gin Batch 13 , 43%	26
Tanqueray No. TEN Gin, 47.3%	24	<i>lime, lemon, orange</i>	
<i>fresh grapefruit, fresh orange, fresh lime</i>		◇ Blade Gin, 47%	32
Tanqueray Rangpur Gin, 41.3%	24	<i>ginger, coriander, black pepper</i>	
<i>rangpur lime, angelica, liquorice</i>		◇ Bogart's Gin, 45%	26
◇ The Gael Signature Scottish Gin, 40%	26	<i>macadamia, lavender, lime zest</i>	
<i>heather, lemon peel, cardamom</i>		◇ Botanica Spiritvs Gin, 45%	24
SINGAPORE		<i>meyer lemon, cucumber, bergamot</i>	
Brass Lion Gin, 40%	24	◇ Brandon's Rock Town Gin, 46%	24
<i>torch ginger flower, lemongrass, tamarind</i>		<i>anise, orange peel, angelica</i>	
Lime Garden Gin, 43%	20	◇ Conniption Gin, 44%	26
<i>key lime, calamansi, lime</i>		<i>cucumber, honeysuckle flower, fig</i>	
SOUTH AFRICA		Corsair Steampunk Gin, 45%	26
◇ Distillery Road Gin, 43%	22	<i>smoked grain, hops, orange</i>	
<i>lime, ginger, fynbos</i>		◇ Counter Gin, 40%	22
Hope on Hopkins African Botanical Gin, 43%	26	<i>tarragon, verbena, meyer lemon</i>	
<i>buchu, kapokbos, citrus peel</i>		◇ DH Krahn Gin, 40%	28
◇ Jorgensen's Distillery Original Gin, 43%	26	<i>galangal, grapefruit, coriander</i>	
<i>wild ginger, bitter apricot, calamus root</i>		◇ Ebb + Flow Gin, 47%	24
Six Dogs Distillery Karoo Gin, 43%	24	<i>elderflower, orange peel, angelica</i>	
<i>karoo thorn flower, acacia thorn tree, lavender</i>		◇ Harvard Avenue Gin, 45%	26
◇ Stretton's Double Cut Gin, 43%	22	<i>rosehip, lemon peel, grains of paradise</i>	
<i>coriander, angelica, cassia</i>		◇ Joseph Magnus Vigilant District Dry Gin, 42%	22
◇ The General's Gin, 43%	32	<i>hand foraged juniper, sesame, tarragon</i>	
<i>buchu, vanilla, pine needles</i>		◇ Journeyman Bilberry Black Hearts Gin, 45%	24
SPAIN		<i>bilberry, anise, orris root</i>	
◇ Gin Eva, 45%	28	◇ Juniper Jones Gin, 48.5%	24
<i>cardamom, bitter orange peel, lemon peel</i>		<i>dill, cucumber, cacao</i>	
◇ Ginsel Gin, 40%	30	◇ Leopold's American Gin, 40%	26
<i>bitter orange peel, orange blossom, tiger nut</i>		<i>pomelo, orris root, orange zest</i>	
◇ Kinross Citric & Dry Gin, 40%	22	◇ New Amsterdam Straight Gin, 40%	22
<i>lemon, grapefruit, mandarin</i>		<i>vanilla, star anise, lime</i>	
◇ Le Tribute Gin, 43%	26	Pinckney Bend Handcrafted American Gin, 47%	24
<i>kumquat, lemongrass, grapefruit</i>		<i>lavender, liquorice, cardamom</i>	
◇ Palma Gin, 46.6%	24	◇ Seagram's Extra Dry Gin, 40%	24
<i>almond flower, lavender, orange leaf</i>		<i>grapefruit zest, fresh lime, texas pecan</i>	
◇ Voortrekker The Pioneer's Gin, 40%	24	◇ Seersucker Southern Style Gin, 42%	26
<i>vanilla, ginger, liquorice</i>		<i>orange peel, mint, honey</i>	
SWEDEN		◇ Small's Gin, 43%	24
◇ ND Excurison Grapefruit Gin, 45%	50	<i>raspberry, orange, lemon</i>	
<i>grapefruit, orange, timut pepper</i>		◇ Smooth Ambler Greenbrier Gin, 40%	26
◇ ImaGin, 40%	22	<i>orange peel, coriander, black pepper</i>	
<i>juniper, orange, lime</i>		◇ Spirit Works Distillery Gin, 43%	26
		<i>fresh orange, lemon zest, cardamom</i>	
		◇ St. Augustine New World Gin, 47%	24
		<i>lemon zest, hibiscus, orange zest</i>	

St. George ATLAS Orange Gin, 45%	22	◇ Terminal City Gin, 42%	24
<i>orange blossom, dill, cucumber</i>		<i>elderflower, chamomile, rosehip</i>	
Tinkerman's Citrus Supreme, 46%	20	◇ Unruly Gin, 43%	26
<i>spanish orange, vanilla bean, elderflower</i>		<i>sarsaparilla, green cedar tips, lavender</i>	
◇ Wire Works American Gin, 45%	24	DENMARK	
<i>lime zest, lemon, star anise</i>		Kobenhavn Klassik Gin, 46%	22
VIETNAM		<i>elderberry, cinnamon, ginger</i>	
Lady Trieu Sapa Citrus Tea Gin, 45%	22	ENGLAND	
<i>oolong, green tea, buddha's hand</i>		Ableforth's Bathtub Gin, 43.3%	28
		<i>cinnamon, clove, cardamom</i>	
		◇ Adnam's Rising Sun Gin, 42%	24
		<i>matcha, lemongrass, ginger</i>	
		Brockmans Premium Gin, 40%	24
		<i>valencia orange peel, blackberry, coriander</i>	
		◇ Buckingham Palace Dry Gin, 42%	30
		<i>lemon verbena, hawthorn berry, mulberry leaf</i>	
		◇ Burleighs Pink London Dry Gin, 40%	22
		<i>sakura, pink grapefruit, hibiscus</i>	
		◇ Edgerton Original Pink Gin, 43%	24
		<i>pomegranate, sweet orange peel, damiana</i>	
		◇ Hadrian's Wall Gin, 40%	24
		<i>chamomile, mint, pimento</i>	
		◇ Jinzu Gin, 41.3%	24
		<i>lavender, elderflower, hibiscus</i>	
		◇ Maiden Arwen's Flower Gin, 42%	24
		<i>rosehip, hibiscus, orange peel</i>	
		◇ ORIGIN Arezzo - Italy Gin, 46%	24
		<i>juniper</i>	
		◇ Sacred Juniper Gin, 40%	26
		<i>juniper</i>	
		◇ Sheep's Eye Gin, 42%	24
		<i>hibiscus, liquorice, black pepper</i>	
		◇ Shooters Gin, 42%	28
		<i>bilberry leaf, hibiscus, lemongrass</i>	
		◇ Staffordshire Black Violet Gin, 40%	24
		<i>black cardamom, violet, cubeb</i>	
		◇ Staffordshire Rose Gold Gin, 40%	22
		<i>saffron, rose petals, juniper</i>	
		◇ Stonewall Pink Rhubarb Gin, 40%	26
		<i>rhubarb, sea buckthorn, blueberry</i>	
		◇ Stovell's Wildcrafted Gin, 42%	26
		<i>bilberry, sweet flag, lovage</i>	
		◇ That Boutique-y D.C. Gin, 40%	32
		<i>hops, tarragon, rosemary</i>	
		The London No.1 Original Blue Gin, 47%	24
		<i>gardenia, bergamot, savory</i>	
		◇ Tiger Premium Gin, 40%	26
		<i>liquorice, cinnamon, sweet lemon peel</i>	
		◇ Toujours 21 Gin, 42%	30
		<i>lavender, angelica, lemon</i>	
		◇ Ver Viola Gin, 40%	30
		<i>butterfly pea flower, rose, juniper</i>	

FLORAL

BOUQUET, PERFUMED BLOOMS, PETALS

AUSTRALIA

- ◇ Bass & Flinders Monsoon Gin, 40% 34
ginseng, ginger, lemongrass
- Canberra Distillery French Earl Grey Gin, 40% 24
ginseng, ginger, lemongrass
- ◇ Distillery Botanica Gin, 42% 34
chamomile, murraya, sage berggarten
- Ink Dry Gin, 43% 26
pepperberry, lemon myrtle, sundried orange peel
- Poor Toms Sydney Dry Gin, 41.3% 22
green apple, strawberry gum leaf, chamomile
- Prohibition 100 Year Gin, 42% 32
honey, chardonnay grapes, saffron
- ◇ Seppeltsfield Distillers Barossa Dry, 41.6% 34
pink pepper, coriander, lavender

BELGIUM

- ◇ Duin Gin, 43% 32
sea buckthorn berry, lavender, angelica
- Forest Dry Spring Gin, 42% 24
juniper, rose petal, lemon peel
- ◇ Gin De Binche Gin, 40% 34
blood orange, hyssop, clove
- ◇ Musa Lova Gin, 41% 22
banana, rosemary, lavender

CAMBODIA

- Jason Kong Butterfly Gin, 41.3% 24
mondulkiri honey, rose apple, hibiscus

CANADA

- ◇ Ampersand Distilling Co. Gin, 43.8% 26
angelica, coriander, orris root
- ◇ Doctor's Orders Gin, 40% 26
lavender, elderberry, apple
- KM 12 Gin, 40% 24
lavender, cucumber, orris
- ◇ Noteworthy New Western Dry Gin, 43% 24
jasmine, lavender, orris root
- ◇ Sheringham Vancouver Island Kazuki Gin, 43% 24
japanese cherry blossom, yuzu, green tea

MODERN - FLORAL

- ◇ Victory Cold Gin, 43.3% 24
black pepper, orris root, liquorice
- ◇ Wicked Wolf Exmoor Gin, 42% 24
orange peel, lemongrass, hibiscus
- ◇ Zephyr Blu Gin, 40% 22
elderberry, elderflower, gardenia flower

ESTONIA

- ◇ Crafter's Aromatic Flower Gin, 44.3% 28
meadowsweet, rosehip, yuzu

FRANCE

- G'Vine Floraison Gin, 40% 20
fresh lime, cardamom, nutmeg
- ◇ Gabriel Boudier Saffron Gin, 40% 22
saffron, orange peel, coriander
- Generous Gin, 44% 22
red pepper, jasmine, elderflower
- ◇ Gin Gold 999.9 Gin, 40% 32
poppy, gentian, violet flower
- Mirabeau Rosé Gin, 43% 22
jasmine, rose petal, lavender
- ◇ Oli'Gin L'olive Gin, 41% 28
olives, rosemary, violet
- ◇ Saint Maudez Gin, 44.7% 26
seaweed, angelica root, orange peel

GERMANY

- ◇ 5 Continents Hamburg Dry Gin, 47% 26
eucalyptus, mate, cactus flower
- Feel! Munich Dry Gin, 47% 26
chokeberry, blueberry, lavender
- Ferdinand Saar Dry Gin, 44% 26
thyme, rosehip, hop blossom
- ◇ Hoos Lapsang Gin, 44.4% 30
lapsang, pine, cardamom
- ◇ Madame Geneva Rouge Gin, 41.9% 22
primitivo grapes, lavender, juniper

INDONESIA

- East Indies Archipelago Dry Gin, 41.8% 20
galingale, torch ginger flower, andaliman batak pepper

IRELAND

- ◇ Boatyard Double Gin, 46% 28
liquorice, lemon peel, bog myrtle
- ◇ Glendalough Wild Spring Botanical Gin, 41% 26
birch sap, sweet cicely, dandelion
- ◇ Von Hallers Gin, 44% 34
ginger, fuchsia, lemon verbena

ITALY

- ◇ Argalà Al Genepy Gin, 45% 26
genepy flower, acacia flower, apricot kernel
- ◇ Bordiga Rosa Gin, 42% 28
rosebud, orange peel, angelica
- Del Professore Monsieur Gin, 43.7% 22
zedoary, lavender, rose

- ◇ Gin Agricolo Gadan, 47% 26
iris, violet, rose

- ◇ Insulae Gin, 42% 32
carob, sesame d'ispica, pistachio

- ◇ Machaby Gin, 43% 26
marjoram, rose, elderberry

- ◇ Selvatiq Recipe 13, 40% 38
red clover, meadow sage, dog rose

JAPAN

- Benizakura 9148 Recipe 0101 Gin, 45% 36
hidaka kelp, blueberry, dried daikon

- ◇ Etsu Gin, 43% 22
yuzu, cherry blossom, sancho pepper

KOREA

- Jung One Gin, 47% 24
perilla leaves, sansho pepper, ginseng

LATVIA

- ◇ Cross Keys Gin, 41% 28
chamomile, linden blossom, rosemary

NORWAY

- ◇ Kimerud Gin, 47% 22
rhodiola rosea, mint, walnut

- Oslo Gin, 45.8% 24
elderflower, coriander, birch leaves

PORTUGAL

- ◇ 6M Friday Chic Gin, 40% 28
vine leaf, rose petal, orange blossom

- ◇ Amicis Gin, 40% 22
carqueja flower, santa maria herb, honey

SCOTLAND

- ◇ Arbikie Kirsty's Gin, 43% 26
blueberry, kelp, thistle

- ◇ Drovers Gin, 45% 28
heather, thistle, orange peel

- ◇ Glaswegin, 41.1% 26
milk thistle, pink pepper, orange flower

- Hendrick's Gin, 41.4% 24
cucumber, rose, cubeb

- Hendrick's Midsummer Solstice, 43.4% 28
lavender, orange blossom, rose

- ◇ House of Elrick Gin, 42% 26
rose petal, heather, pink pepper

- ◇ Kerr's Borders Gin, 43% 24
cassia, orange peel, liquorice

- ◇ Orkney Gin Company Johnsmas Gin, 41.3% 28
rose petal, heather, mint

- ◇ Strathearn Heather Rose Gin, 40% 24
heather, rose petal, liquorice

- ◇ Theodore Pictish Gin, 43% 26
damask rose, oolong tea, pomelo

- ◇ Vesperis Pictish Gin, 40% 26
heather honey, heather blossom, lemon peel

SOUTH AFRICA			
◊ Geometric Gin, 43%	36		
<i>fynbos, buchu, cardamom</i>			
Inverroche Amber Gin, 43%	24		
<i>mountainous fynbos, juniper, citrus</i>			
Inverroche Classic Gin, 43%	24		
<i>limestone fynbos, lemon zest, orange zest</i>			
Inverroche Verdant Gin, 43%	24		
<i>coastal fynbos, lemon zest, orange zest</i>			
Musgrave Pink Gin, 43%	24		
<i>african ginger, grains of paradise, cardamom</i>			
Six Dogs Blue Gin, 43%	22		
<i>blue pea, rose, lucerne</i>			
◊ Westcliff Gin, 43%	24		
<i>ginger, buchu, coriander</i>			
◊ Wildcraft Gin Equinox 79, 43%	38		
<i>eureka lemon rind, lavender, nasturtium</i>			
Wilderer Distillery Fynbos Gin, 45%	22		
<i>buchu, honeybush, wild dagga</i>			
Wilderer Rose Water Gin, 43%	22		
<i>rose water, cinnamon, cardamom</i>			
◊ Woodstock Gin 021 on Victoria, 43%	26		
<i>rose geranium, rooibos, rosemary</i>			
◊ Woodstock Gin 142 on Gympie, 43%	26		
<i>hemp, honeybush, buchu</i>			
SPAIN			
◊ Gin Loe, 40%	24		
<i>aloe vera, jasmine, orange blossom</i>			
Nordés Atlantic Galician Gin, 40%	22		
<i>bay laurel, eucalyptus, hibiscus</i>			
◊ Tann's Gin, 40%	22		
<i>rose petal, mandarin peel, raspberry</i>			
SWEDEN			
◊ Spirit of Hven Organic Gin, 40%	28		
<i>calamus root, mauritian bourbon vanilla, cassia</i>			
SWITZERLAND			
◊ 82 Dry Gin, 45%	40		
<i>pink pepper, hibiscus, chamomile</i>			
◊ Xellent Edelweiss Gin, 40%	28		
<i>woodruff, edelweiss, lemon balm</i>			
USA			
Aviation Gin, 42%	24		
<i>lavender, sarsaparilla, coriander</i>			
◊ Boardroom Gin, 40%	24		
<i>lemon, juniper, star anise</i>			
◊ CapRock Gin, 41%	24		
<i>apple, lavender, juniper</i>			
◊ Doc Porter's Gin, 44%	26		
<i>chamomile, cucumber, lemon peel</i>			
Dorothy Parker Gin, 44%	22		
<i>hibiscus, elderberry, cinnamon</i>			
◊ Far North Sölveig Gin, 43.5%	26		
<i>red grapefruit, organic thyme, lavender</i>			
Greenhook Ginsmiths Gin, 47%	24		
<i>cinnamon, chamomile, elderflower</i>			
Koval Dry Gin, 47%	24		
<i>lavender, rosehip, grains of paradise</i>			
◊ McElroy's Corruption Gin, 45%	26		
<i>allspice, lemongrass, kaffir lime</i>			
◊ Neversink Spirits Gin, 43%	22		
<i>elderflower, star anise, cinnamon</i>			
◊ Swallowtail Premium Gin, 45%	24		
<i>lime zest, lavender, cardamom</i>			
◊ That Boutique-y Monkey Tea Party Gin, 46%	28		
<i>lavender, cardamom, orange peel</i>			
◊ Townshend's Gin, 40%	24		
<i>lavender, green tea, chamomile</i>			
◊ Uncle Val's Botanical Gin, 45%	26		
<i>green tea, lavender, chamomile</i>			
VIETNAM			
Lady Trieu Contemporary Vietnam Gin, 43%	22		
<i>hibiscus roselle, ginger, kumquat</i>			
<div style="border: 1px solid black; padding: 10px; margin: 10px auto; width: fit-content;"> <p style="text-align: center;">HERBAL FRESH BUNCH, DRIED LEAVES, VEGETAL</p> </div>			
ARGENTINA			
◊ Principe De Los Apostoles Mate Gin, 40%	28		
<i>yerba mate, eucalyptus, spearmint</i>			
AUSTRALIA			
◊ 313 Dry Wattleseed Gin, 42%	24		
<i>wattleseed, lemon zest, cardamom</i>			
78 Degrees Sunset Gin, 42%	22		
<i>bush apple, strawberry gum, rosella flower</i>			
◊ Archie Rose Summer Gin Project Bush Gin, 40%	32		
<i>pink pepper, waxflower, thyme</i>			
Four Pillars Olive Leaf Gin, 43.8%	24		
<i>olive leaf, lemon myrtle, macadamia</i>			
◊ Hobart No.4 Batch Distilled Gin, 44%	38		
<i>lemon myrtle, anise myrtle, wattleseed</i>			
◊ Hurdle Creek Still Aniseed Gin, 42%	36		
<i>aniseed, anise myrtle, cinnamon myrtle</i>			
Lawrenny Highlands Gin, 40%	24		
<i>blue cypress needle, buchu, grains of paradise</i>			
◊ Moontide Pride Tide Gin, 41%	28		
<i>pineapple, passionfruit, coconut</i>			
◊ Noosa Heads Sum Yung GuysXFortune Pho Gin, 46%	38		
<i>nam pla, spring onion, porcini mushroom</i>			
Prohibition Moonlight Gin, 42%	46		
<i>black goji, honeybush, blood lime</i>			
Leopold Organic Dry Gin, 42.7%	38		
<i>basil, coriander, rose petal</i>			

MODERN - HERBAL

◇ Seppeltsfield Distillers House Gin, 41.5%	34		
<i>chamomile, lavender, cornflower</i>			
BELGIUM			
◇ Butcher's Gin, 43%	22		
<i>orange zest, black pepper, angelica</i>			
◇ Copperhead The Gibson Edition Gin, 40%	26		
<i>dill seed, fennel seed, black pepper</i>			
◇ Poppies Gin, 40%	28		
<i>juniper, liquorice, aniseed</i>			
◇ Spring Méditerranée Gin, 40.5%	40		
<i>bay leaf, lemon peel, thyme</i>			
BRAZIL			
◇ McQueen & The Violet Fog Gin, 40%	26		
<i>rosemary, calamansi, açai</i>			
WH 48 Dry Gin, 44%	24		
<i>cane leaf, ginger, yerba mate</i>			
CAMBODIA			
Seekers Mekong Dry Gin, 41.3%	24		
<i>cassava root, pandan, khmer basil</i>			
CANADA			
◇ Black Moon Gin with Smoked Rosemary, 40%	34		
<i>smoked rosemary, sage, lemon peel</i>			
◇ Endeavour Origins Gin, 45%	26		
<i>liquorice, red grapefruit, black pepper</i>			
◇ Endeavour Small Batch Gin, 45%	26		
<i>grain of paradise, red grapefruit, black pepper</i>			
◇ Kootenay Country Gin, 40%	26		
<i>orange peel, pine nut, rosemary</i>			
◇ Long Table London Dry Gin, 44%	24		
<i>fennel seed, rosemary, lemon peel</i>			
◇ Okanagan Spirits Family Reserve Gin, 40%	24		
<i>spruce tips, rose, tarragon</i>			
◇ Okanagan Spirits Gin, 40%	24		
<i>spruce tips, rose, orris root</i>			
◇ Old Blood Gin, 40%	28		
<i>mesopotamian coriander, liquorice, saskatoon berry</i>			
◇ Paul's Tomb Gin, 40%	24		
<i>pine, spruce tips, lemon peel</i>			
◇ Queensborough Dry Gin, 43%	24		
<i>spruce tips, rosemary, jasmine</i>			
◇ Sheringham Vancouver Island Seaside Gin, 43%	24		
<i>winged kelp, rose, lemon</i>			
St. Laurent Gin, 43%	26		
<i>cubeb, grains of paradise, laminar seaweed</i>			
◇ Stump Coastal Forest Gin, 42%	24		
<i>cascade hops, bay laurel, grand fir</i>			
◇ Ungava Gin, 43.1%	24		
<i>artic blend, wild rosehip, cloudberry</i>			
CZECH REPUBLIC			
◇ Koniferum Borovicka Gin, 37.5%	22		
<i>koniferum pine, cranberry, juniper</i>			
DENMARK			
◇ Kobenhavn Klassik Lounge Gin, 40%	26		
<i>spruce, rose hip, juniper</i>			
ENGLAND			
Apoteca Gin, 43%	28		
<i>bee bread, propolis, blackcurrant leaf</i>			
Cambridge Anty Gin, 42%	88		
<i>62 red wood ants, wood avens, nettle</i>			
Cambridge Distillery Truffle Gin, 42%	60		
<i>truffle, lemon, juniper</i>			
◇ Dancing Cows Lymington Gin, 43%	26		
<i>hops, cardamom, angelica</i>			
◇ Gin Lane 1751 Victoria Pink Gin, 40%	26		
<i>star anise, coriander, angelica</i>			
Half Hitch Gin, 40%	24		
<i>malawian black tea, bergamot, black pepper</i>			
◇ Land Of Saints Organic Gin, 40%	28		
<i>violet leaf, hyssop, rose buds</i>			
◇ Mayfield Gin, 40%	22		
<i>hops, coriander, orris root</i>			
◇ One Gin, 43%	26		
<i>sage, lemon peel, nutmeg</i>			
◇ ORIGIN Caprese Michelangelo - Italy Gin, 46%	24		
<i>juniper</i>			
◇ ORIGIN Istog - Kosovo Gin, 46%	24		
<i>juniper</i>			
◇ ORIGIN Meppel - Netherlands Gin, 46%	24		
<i>juniper</i>			
◇ Slingsby Gin, 42%	26		
<i>primrose, sweet cicely, milk thistle</i>			
◇ Stafford's Gin, 42%	26		
<i>rosemary, macadamia nut, lemon balm</i>			
◇ T.E.A Earl Grey Gin, 42%	24		
<i>earl grey, bergamot oil, bay leaf</i>			
◇ T.E.A. Jasmine Gin, 42%	28		
<i>rose petal, bay leaf, jasmine</i>			
◇ True North Sheffield Dry Gin, 42%	24		
<i>gentian, bilberry, henderson's relish</i>			
◇ Two Birds Speciality Cocktail Gin, 40%	24		
<i>juniper, orris root, coriander</i>			
◇ Unit Six Ultra Premium Gin, 42%	28		
<i>bergamot, pink pepper, freesia flower</i>			
◇ Zymurgorium The Original Manchester Gin, 40%	32		
<i>coriander, caraway, galangal</i>			
FINLAND			
◇ Ägräs Gin, 43.7%	34		
<i>red clover, wild angelica, rosemary</i>			
Kyrö Napue Gin, 46.3%	24		
<i>cranberry, sea buckthorn, birch leaf</i>			
FRANCE			
Fair Juniper Gin, 42%	22		
<i>cardamom, calamus root, angelica</i>			

◊ Fieldfare Dry Gin, 47%	34	Del Professore Madame Gin, 42.9%	22
<i>fennel seed, angelica, masterwort</i>		<i>tansy, zedoary, cassia</i>	
◊ Gin D'Azur, 43%	26	◊ Gin Agricolo Blagheur, 47%	26
<i>menton lemon peel, marjoram, rosemary</i>		<i>cumin, southernwood, wormwood</i>	
◊ Sorgin, 43%	24	O'ndina Gin, 45%	30
<i>sauvignon blanc distillate, violet, broom flower</i>		<i>basil, majoram, thyme</i>	
◊ Terres de Mistral Gin, 40%	26	Giniu Gin, 40%	32
<i>herbs de provence, thyme, grapefruit peel</i>		<i>mastic, sage, myrtle</i>	
GREECE		◊ Grifu Gin, 43%	24
Grace Gin, 45.7%	20	<i>mint, mastic, sage</i>	
<i>orange blossom, myrtle leaf, rock samphire</i>		Piùcinque Gin, 47%	24
Votanikon Gin, 40%	20	<i>zedoary, bergamot, wormwood</i>	
<i>mountain tea, saffron, mastic</i>		◊ Rivo Gin, 43%	36
GERMANY		<i>thyme, lemon balm, cardamom</i>	
Bitter Truth Pink Gin, 40%	22	◊ Simple Gin, 40%	22
<i>aniseed, mace, fennel seed</i>		<i>scotch pine shoots, elderflower, sage</i>	
◊ Grassl Bergbrenner Gin, 43%	28	JAPAN	
<i>juniper, coriander, gentian</i>		◊ Kanomori Craft gin, 47%	28
◊ Voluptas Gin, 43%	28	<i>hibiscus, kuromoji, star anise</i>	
<i>ginseng, maca, cumin</i>		Ki No Bi Kyoto Dry Gin, 45.7%	24
ICELAND		<i>yuzu, bamboo leaf, green shansho</i>	
◊ Icelandic Eagle Gin, 43%	26	Ki No Tea Gin, 46.7%	26
<i>ginger, angelica, coriander</i>		<i>sencha tea, gyokuro green tea, ginger</i>	
INDIA		Nikka Coffey Gin, 47%	22
Amrut Nilgis Gin, 42.8%	20	<i>amanatsu, apple, kabosu</i>	
<i>paan, lemongrass, nilgiris tea</i>		Okinawa Gin Recipe 02, 47%	26
Hapusa Dry Gin, 43%	22	<i>moon peach, ginger, lemongrass</i>	
<i>gondhoraj, mango, almond</i>		ROKU Gin, 43%	22
Jin Jiu Darjeeling Gin, 43%	20	<i>cherry blossom, cherry leaf, shanso pepper</i>	
<i>darjeeling tea, ginger, clove</i>		Sakurao Hamagou Gin, 47%	26
Stranger & Sons x Four Pillars 'Trading Tides' Gin, 42.8%	32	<i>rosemary, hamagou, shiranui</i>	
<i>lemon myrtle, mangosteen, tamarind</i>		◊ Tatsumi Hop Gin, 47.5%	42
Terai Gin, 42.8%	20	<i>hops, roses, mandarin</i>	
<i>tulsi leaf, almond, rose</i>		Tatsumi Innaki Gin, 45%	30
IRELAND		<i>juniper</i>	
◊ Bonac 24 Gin, 42%	36	KENYA	
<i>lemon peel, cucumber, spearmint</i>		Procera Green Dot Gin, 47%	45
◊ Boatyard "Mariposa Negra Edition" Gin, 46%	26	<i>heartwood, foliage tips. juniper</i>	
<i>toad skin melon, limequat, sweet gale</i>		LUXEMBOURG	
◊ Dalkey Gin, 42%	20	◊ Supa Saya Gin, 39.5%	28
<i>dillisk seaweed, sea salt, lemon</i>		<i>juniper, malt grain</i>	
Dingle Gin, 42.5%	22	NETHERLANDS	
<i>hawthron, bog myrtle, rowan berry</i>		◊ Palte Premium Gin, 43%	32
Drumshanbo Irish Gunpowder Gin, 43%	26	<i>green tea, gale, juniper</i>	
<i>gunpowder tea, star anise, meadowsweet</i>		◊ VL 92 Gin, 41.7%	28
◊ OrnaBrak Single Malt Gin, 43%	26	<i>coriander, cinnamon, caraway</i>	
<i>douglas fir, lemon verbena, angelica</i>		NEW ZEALAND	
ITALY		◊ Black Robin Rare Gin, 43%	38
◊ Clandestino Dry Gin, 40%	26	<i>star anise, lime zest, lemongrass</i>	
<i>cardamom, angelica, calamus</i>		Curiosity Dry Gin, 40%	22
		<i>kawakawa, horopito, manuka</i>	

MODERN - HERBAL

- ◇ Victor Gin, 42% 24
lemongrass, cardamom, coriander
- NORWAY**
- Bareksten Gin, 46% 26
elderflower, lingonberry, rhubarb
- PERU**
- Amazonian Gin Company Gin, 41% 24
camu camu, tonka bean, sasha inchi
- SCOTLAND**
- ◇ Gordon Castle Gin, 43% 26
mint, lavender, gooseberry
- Isle of Harris Gin, 43% 24
sugar kelp, liquorice, cassia
- Red Door Highland Gin, 45% 24
lemon peel, bitter orange peel, coriander
- ◇ Verdant Dry Gin, 43% 26
angelica, green cardamom, bitter orange peel
- ◇ Wild Island Botanic Gin, 43.7% 26
bog myrtle, heather flowers, meadowsweet
- SINGAPORE**
- Kyuri Gin, 43% 26
japanese cucumber, sakura cherry blossom, juniper
- SOUTH AFRICA**
- Autograph Gin, 43% 22
artemesia afra, buchu, angelica
- Hobbs Cape Dry Gin, 43% 20
lime leaf, lemongrass, coriander
- Hobbs Pink Peppercorn Gin, 43% 20
pink peppercorn, cardamom, coriander
- KWV Cruxland Gin, 43% 26
kalahari truffle, honeybush, aniseed
- ◇ New Harbour Distillery Rooibos Infused Gin, 43% 24
rooibos, sweet orange peel, cassia
- ◇ New Harbour Distillery Spekboom Gin, 43% 24
spekboom tree leaf, liquorice, almonds
- ◇ Woodstock Gin 399 on Albert, 43% 26
rose geranium, rosemary, buchu
- ◇ Woodstock Gin Inception Beer Base Gin, 43% 24
honeybush, buchu, juniper
- SPAIN**
- ◇ 19 Flors Gin, 40% 24
black tea, chamomile, cilantro
- ◇ BCN Gin, 40% 28
southern wormwood, rosemary, fig
- ◇ Fever Island Premium Gin, 40% 24
lemongrass, fennel seed, rosemary
- ◇ Germà Dry-Gin, 44% 22
cardamom, coriander, juniper
- ◇ Gin Mare, 42.7% 22
olive, rosemary, thyme
- ◇ Ginebra K-25 Gin, 45% 26
mandarin, chamomile, mint
- ◇ Harbour 40 Degrees 48 N Gin, 40% 24
sea fennel, sea rocket, glasswort
- ◇ Larios Ginebra Mediterranea Gin, 37.5% 24
coriander, juniper, orange peel
- Mascaro 9 Gin, 40% 22
juniper
- Puerto de Indias Pure Black Edition Gin, 40% 24
jasmine, vanilla, orange blossom
- ◇ Ruchey Nispero London Dry Gin, 40% 22
medlar, coriander, cardamom
- Santamania Lola y Vera Gin, 40% 24
apple, ginger, sunflower
- Santamania London Dry Gin, 41% 24
liquorice, raspberry, wild rosemary
- ◇ Suau Gin, 43% 24
sóller orange peel, rosemary, fig leaf
- ◇ Valxerit Gin, 40% 22
rosemary, ginger, cherry
- ◇ Volcanic Gin, 42% 26
cumin, chamomile, st. john's wort
- Xoriguer Mahon Gin, 38% 26
sage, juniper needle, pine
- SWEDEN**
- Bergslagen Organic Gin, 45.7% 22
lingonberry, coriander, lemon peel
- SWITZERLAND**
- ◇ Breil Pur Gin, 45% 34
rhododendron, alpine rose, chocolate mint
- ◇ Modernist Alpine Dry Gin, 44% 32
mountain sage, mountain thyme, elderflower
- ◇ ingenious! Swiss Blended, 45% 38
laurel fruit, hay flower, black currant leave
- ◇ Rheinbrand Dry Gin, 40% 38
elderflower, riesling, lemongrass
- ◇ Rheinbrand Hemp Edition Gin, 40% 38
elderflower, riesling, cbd hemp
- USA**
- ◇ ATELIER Vie Euphrosine #9 Gin, 45% 28
bay leaf, coffee, hyssop
- ◇ Breuckelen Glorious Gin, 45% 26
ginger, rosemary, grapefruit peel
- ◇ Catoctin Creek Watershed Gin, 46% 24
cinnamon, anise, coriander
- Corsair Gin, 44% 24
angelica, orris root, orange peel
- ◇ Farallon Gin, 43% 22
cucumber, fennel seed, lemongrass
- Farmer's Organic Gin, 46.7% 24
lemongrass, elderflower, cucumber
- ◇ FEW Breakfast Gin, 42% 28
earl grey tea, bergamot, coriander

◇ Golden Moon Gin, 45%	28	Four Pillars Spice Trade Gin, 43.8%	24
<i>mint, lavender, juniper</i>		<i>teppal, cardamom, chilli</i>	
◇ Half Moon Orchard Gin, 46%	24	Four Pillars Christmas Edition (2021), 43.8%	28
<i>fresh bergamot, apple, nutmeg</i>		<i>christmas pudding, cassia, lavender</i>	
◇ Hedge Trimmer Gin, 42%	22	◇ Gunnery Australian Spiced Gin, 40%	36
<i>sarsaparilla, watermelon rind, coriander</i>		<i>bush tomato, demerara, vanilla bush honey</i>	
◇ Junipero Gin San Francisco Strength, 49.3%	24	◇ Knocklofty Penn Gin, 40%	34
<i>coriander, liquorice, cubeb</i>		<i>lemongrass, pepperberry, basil</i>	
New Deal No.1 Gin, 45%	22	◇ McHenry Federation Gin, 42.2%	28
<i>juniper</i>		<i>quandong, mountain pepper leaf, celery top pine</i>	
◇ Ransom Dry Gin, 43%	24	Melbourne Moonshine Memo Gin, 41.8%	22
<i>marionberry, hops, anise</i>		<i>cascara, navel orange, cardamom</i>	
St. George Botanivore Gin, 45%	22	◇ Moontide White Pearl Gin, 41%	26
<i>coriander, dill, grapefruit peel</i>		<i>gubiny, guwarl, sandalwood</i>	
St. George Terroir Gin, 45%	22	AUSTRIA	
<i>douglas fir, roasted coriander, laurel</i>		◇ Reisetbauer Blue Gin, 43%	26
◇ The Walter Collective Gin, 45%	26	<i>cinnamon, hops, almond</i>	
<i>cassia, cardamom, grapefruit peel</i>		BELGIUM	
Tinkerman's Curiously Bright & Complex Gin, 46%	20	◇ Beernaert Original Pure Gin, 40%	26
<i>jasmine tea, ginger, lemongrass</i>		<i>juniper, cardamom, coriander</i>	
TRU Organic Gin, 42%	24	◇ Belgin Speciale Gin, 41.4%	26
<i>vanilla bean, clove, chamomile</i>		<i>lemon peel, hops, clove</i>	
◇ Valor West Coast Gin, 43.1%	22	Blind Tiger Handcrafted Gin Piper Cubebea, 47%	32
<i>cinnamon, pink pepper, anise</i>		<i>cubeb, orange blossom, malted barley</i>	
◇ Vapor Distillery Rhok Gin, 47%	28	◇ Buss No.509 Rebel Cut Gin, 47%	28
<i>lavender, sencha tea, chamomile blossom</i>		<i>lavender, white pepper, cinnamon</i>	
◇ Volstead's Folly American Gin, 40.5%	24	◇ Soul Tamashii Gin, 46%	24
<i>sichuan pepper, sage, rosemary</i>		<i>lavender, hops, poppy</i>	
◇ Voyager Dry Gin, 42%	22	◇ Spring Gentleman's Cut Gin, 48.8%	50
<i>oak chip, elderberry, sage</i>		<i>rhubarb root, pine buds, black pepper</i>	
VIETNAM		◇ Spring Original Gin, 43.8%	32
◇ Mashed Up Craft Gin, 43%	20	<i>rhubarb root, pine buds, black pepper</i>	
<i>corn, hops, kumquat</i>		CANADA	
WALES		◇ Dixon's Wicked Gin, 40%	22
◇ Da Mhile Seaweed Organic Gin, 42%	24	<i>liquorice, elderberry, grains of paradise</i>	
<i>seaweed, eucalyptus, mint</i>		◇ Old Order Legacy Gin, 40%	24
		<i>apples, sumac, sage</i>	
		◇ Tempo Renovo Dry Gin, 40%	24
		<i>liquorice, angelica, coriander</i>	
		CHINA	
		◇ Julu Dry Gin, 40%	20
		<i>apple blossom, cumin, nutmeg</i>	
		CZECH REPUBLIC	
		◇ Žufánek Le Gin Occulte Gin, 45%	32
		<i>pink pepper, vanilla, juniper</i>	
		ENGLAND	
		Chase GB GIN, 40%	22
		<i>cinnamon, cardamom, ginger</i>	
		◇ Indian Summer Saffron Infused Gin, 46%	24
		<i>saffron, angelica, coriander</i>	
		◇ Masons Dry Yorkshire Tea Edition Gin, 42%	24
		<i>black tea, sichuan pepper, bay leaf</i>	

SPICED

PEPPERS, BAKING SPICES, FRAGRANT

AUSTRALIA

78 Degrees Classic Gin, 42%	22
<i>cinnamon, nutmeg, star anise</i>	
78 Degrees Desert Gin, 48%	24
<i>blood lime, clove, black pepper</i>	
◇ Brookies Byron Dry Gin, 46%	32
<i>blood lime, aniseed myrtle, ginger</i>	
Canberra Distillery Dry Gin, 47%	24
<i>cassia, mountain pepperleaf, liquorice</i>	
Four Pillars Bloody Shiraz Gin, 37.8%	22
<i>shiraz grape, cinnamon, pepperberry</i>	
Four Pillars Spiced Negroni Gin, 43.8%	22
<i>pepperberry leaf, cinnamon, ginger</i>	

MODERN - SPICED

- ◇ Peaky Blinder Spiced Dry Gin, 40% 24
ginger, grains of paradise, black pepper
- ◇ Sacred Coriander Gin, 40% 26
coriander, angelica, orris root
- ◇ Scilly Spirit Island Gin , 44% 28
javan pepper, cardamom, cassia
- ◇ Wardington's Ludlow Spiced Gin, 42% 26
ginger, nutmeg, grains of paradise
- ◇ Zymurgorium Mandarin Dynasty Gin, 40% 34
mandarin, sichuan pepper, clove
- ◇ Metsis Gin, 44% 24
cinnamon, ginger, apricot

FINLAND

- Kalevala Distilled Gin, 46.3% 22
raspberry leaf, ginger, cardamom

FRANCE

- ◇ Audemus Pink Pepper Gin, 44% 28
pink pepper, honey, cinnamon
- G'Vine Nouaison Gin, 43.9% 24
sandalwood, vetiver, ginger
- ◇ Generous Coriander & Combava Gin, 44% 32
coriander, combava, red pepper
- Generous Purple Gin, 44% 24
timut pepper, grapefruit, lemon
- Le Gin 1 & 9 Gin, 40% 24
ginger, jamaican pepper, cinnamon
- ◇ Thompson's Small Batch Gin, 43% 26
peach, caviar, jamaican pepper

GERMANY

- ◇ Bavarka Bavarian Gin, 46% 28
hops, fennel seed, hay flower
- ◇ Granit Bavarian Gin, 42% 32
melissa, bald-money, gentian root
- ◇ Madame Geneva Blanc Gin, 44.4% 22
juniper, coriander, ginger
- The Illusionist Dry Gin, 45% 30
mace, blue pea flower, liquorice

INDIA

- Stranger & Sons Gin, 42.8% 22
black pepper, gondhoraj lime peel, coriander

IRELAND

- Bertha's Revenge Gin, 42% 26
almond, elderflower, sweet woodruff
- ◇ Blackwater Distillery Barry's Tea, 40% 22
orange, cinnamon, cardamom
- Maharani Gin, 41% 22
nutmeg, mace, pomelo
- ◇ Ninth Wave Irish Gin, 43% 24
lemon verbena, cardamom, orange peel

ITALY

- ◇ Roby Marton's Gin, 47% 26
horseradish, ginger, clove
- Rocca di Montenassi Imperiale Gin, 43% 26
elderberry, tumeric, bergamot

JAPAN

- 135 East Hyogo Dry Gin, 42% 28
shiso, ume, sansho pepper
- ◇ Kibou Hokkaido Shakotan Gin, 45% 25
red pine, seaweed, juniper

KENYA

- Procera Blue Dot Gin, 44% 38
locust bean, mukombera, oyster shell

NETHERLANDS

- ◇ 1689 Gin, 42% 20
quince, pippin, citrus peel
- Gin & Jonnie GastroGin, 45% 22
sichuan pepper, fennel seed, verbena
- ◇ Schermer Dry Gin, 43% 24
allspice, rhubarb, lavender
- ◇ Wagging Finger Exercise V2.0 Gin, 44% 24
juniper, coriander, cassia

NEW ZEALAND

- Denzien Smoke & Embers Gin, 44% 32
chipotle, morita, habanero
- ◇ Hidden World Hot Cross Bun Gin, 44% 38
cinnamon, nutmeg, sultana
- ◇ Hidden World Oriental Spice Gin, 44% 32
sichuan pepper, clove, cinnamon

SCOTLAND

- ◇ Hendrick's Lunar Gin , 43.4% 26
cucumber, rose, cubeb
- ◇ Orkney Gin Company Mikkemas Gin, 41.3% 28
cinnamon, rosehip, orange peel

SINGAPORE

- Tanglin Orchid Gin, 42% 22
vanilla, orchid, amchoor powder

SRI LANKA

- Colombo No. 8 Gin, 43.7% 24
ginseng, ginger root, coriander

SOUTH AFRICA

- A Mari Indian Ocean Gin, 43% 24
ajwain seed, swahili lime, pink peppercorn
- Ginologist Spiced Gin, 43% 22
grains of paradise, ashanti pepper, cardamom
- Hope On Hopkins Mediterranean Gin, 43% 26
olive, basil, thyme
- ◇ Pienaar & Son Orient Gin, 43% 26
allspice, ginger, cassia
- ◇ Woodstock Gin 001 on Searle, 43% 26
ginger, lavender, coriander

SPAIN		LUSCIOUS DELICATE, VELVETY SWEETENED, SCRUMPTIOUS	
◇ Santamania x Four Pillars Gin, 40%	26		
<i>bush tomato, rosemary, olive leaf</i>			
SWEDEN		BELGIUM	
◇ ND Forest Dry Gin, 40%	28	◇ Holy Water Cuberdon Gin, 40%	38
<i>pine, spruce, clove</i>		<i>juniper, coriander, orange zest</i>	
SWITZERLAND		ENGLAND	
◇ Arctic Velvet Gin, 40%	34	Ableforth's Bathtub Old Tom Gin, 42.4%	30
<i>nutmeg, cumin, coriander</i>		<i>liquorice, coriander, cardamom</i>	
◇ Basilisk Dry Gin, 44%	38	Hayman's 1820 Gin Liqueur, 40%	22
<i>hibiscus blossom, pimento, clove</i>		<i>orange peel, lemon peel, nutmeg</i>	
◇ Matte Dry Gin, 42%	38	◇ Hayman's English Cordial Gin, 42%	26
<i>violet root, ginger, cinnamon</i>		<i>lemon peel, liquorice, angelica</i>	
◇ Turicum Dry Gin, 41.5%	34	◇ Keepr's Honey Gin, 40%	26
<i>linden flower, orange blossom, thyme</i>		<i>honey, cardamom, cassia</i>	
TAIWAN		Tarsier Pink Gin, 40%	
The Orientalist Gunpowder Gin, 40%	28	<i>dragon fruit, galangal, calamansi</i>	
<i>gunpowder tea, kampot pepper, omija</i>		◇ The Distillery Celebrated Butter Gin, 44%	32
THAILAND		<i>butter, bitter orange peel, nutmeg</i>	
◇ Kristall Thai Spirit Gin, 40%	22	◇ The Wrecking Coast Cornish Clotted Cream Gin, 44%	26
<i>lemongrass, alston pepper, citrus</i>		<i>clotted cream, cinnamon, liquorice</i>	
◇ Origin Gin, 40%	22	◇ Whitley Neil Blackberry Gin, 43%	20
<i>oolong tea, bael fruit, mah kwan pepper</i>		<i>plump berries, cassia, black pepper</i>	
Paper Lantern Sichuan Pepper Gin, 40%	22	FINLAND	
<i>sichuan pepper, makhwaen, longan berry honey</i>		Kyrö Pink Gin, 38.2%	
USA		<i>strawberry, lingonberry, elderflower</i>	
◇ Commerce Gin, 42.5%	22	GERMANY	
<i>cumin, cardamom, lime zest</i>		◇ Mundart Kaiserstuhl Dry Gin, 43%	30
◇ Fid Street Hawaiian Gin, 45%	28	<i>aniseed, coriander, lemon peel</i>	
<i>pineapple, cedar leaf, fennel seed</i>		◇ Sears Cutting Edge Gin, 44%	22
◇ Imagination Gin, 40%	22	<i>juniper, bergamot, coriander</i>	
<i>sichuan pepper, celery, lavender</i>		SCOTLAND	
◇ Letherbee Gin, 48%	26	Boë Passion Gin, 41.5%	26
<i>cubeb, ginger, almond</i>		<i>passionfruit, orange peel, mint</i>	
◇ Madam Pattirini Gin, 44%	24	Tanqueray Flor de Sevilla, 41.2%	22
<i>bergamot, ginger, cardamom</i>		<i>seville orange, orange blossom, liquorice</i>	
◇ Roxor Artisan Gin, 45%	28	SINGAPORE	
<i>grapefruit zest, texas pecan, sarsaparilla</i>		Chendol Gin, 40%	
St. George Dry Rye Gin, 45%	22	<i>pandan, coconut, juniper</i>	
<i>black pepper, grapefruit peel, caraway</i>		Coconut Pandan Gin, 43%	
Tinkerman's Sweet Spiced Gin, 46%	22	<i>coconut, pandan, orange</i>	
<i>wormwood, grains of paradise, lemon verbena</i>		SOUTH AFRICA	
VIETNAM		◇ Cape Town Rooibos Red Gin, 43%	24
◇ Baigur Gin, 43%	32	<i>rooibos, cinnamon, orange peel</i>	
<i>dragonfruit, bird's eye chilli, lotus</i>		SPAIN	
Lady Trieu Dalat Flowerbomb Gin, 45%	22	◇ Botanic Ultra Premium London Dry Gin, 45%	28
<i>lotus flower, chrysanthemum, jasmine</i>		<i>chamomile, almond, mango</i>	
Lady Trieu Mekong Delta Dry Gin, 45%	22	THAILAND	
<i>kumquat, liquorice, star anise</i>		Iron Balls Gin, 40%	
Lady Trieu Hoi An Spice Road Gin, 45%	22	<i>coconut, pineapple, ginger</i>	
<i>ginger, cardamom, fennel seed</i>			

MODERN - LUSCIOUS . NUTTY . EARTHY

USA

- FEW American Gin, 40% 24
tahitian vanilla, cassia, hops



ENGLAND

- ◊ Sipsmith Raffles 1915 Gin, 43% 38
pomelo, jasmine, lemongrass

CANADA

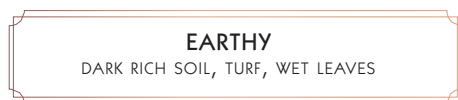
- Cirka Sauvage Gin, 44% 24
bergamot, lavender, red pine

SCOTLAND

- Rock Rose Autumn Gin, 41.5% 24
bilberry, coriander, nasturtium flower

SWITZERLAND

- ◊ Matters Nutmeg Gin, 44% 28
ginger, nutmeg, hyssop



AUSTRALIA

- ◊ Applewood Distillery Gin, 43% 36
pepperberry, wattleseed, macadamia
- ◊ Artemis Gin, 44% 28
eucalyptus, artemesia, finger lime
- Giniversity Smoked Hemp Gin, 40% 24
hemp heart, white juniper

BELGIUM

- ◊ Belgin Fresh Hop Gin, 40% 26
hops, cardamom, vanilla

CANADA

- ◊ Dixon's VirGin Gin, 40% 22
liquorice, cinnamon, vanilla
- ◊ Seraph Gin, 40% 24
coriander, chicory, rose

ENGLAND

- ◊ Caspyn Midsummer Dry Gin, 40% 24
lemon verbena, cucumber, hibiscus
- ◊ ORIGIN Klanac - Croatia Gin, 46% 24
juniper
- ◊ ORIGIN Skopje - Macedonia Gin, 46% 24
juniper
- ◊ Tappers Darkside Gin, 39.6% 38
sea beet, cardamom, chickweed

FINLAND

- ◊ Isfjord Gin, 44% 28
lemongrass, sandal tree oil, cardamom

GERMANY

- ◊ Monkey 47 Distiller's Cut Edition of 2016 Gin, 47% 42
pomelo, lemon balm, fir honey

ITALY

- ◊ Aduro Bell Pepper Gin, 40% 36
green capsicum, mugwort, ginger
- ◊ Volcano Etna Dry Gin, 41% 26
hazelnut, bitter orange, etna broom flower

JAPAN

- ◊ Benizakura 9148 Recipe 1922 Gin, 42% 28
smoked juniper, hidaka kelp, pink pepper
- ◊ Benizakura 9148 Recipe 3891 Gin, 45% 26
red maple, mountain wasabi, red purple soup
- Sakurao Limited Edition Gin, 47% 24
sakura, kinome, ground oyster shell

NEW ZEALAND

- ◊ Hidden World Guardian Wild Spice Gin, 44% 32
kawakawa leaf, horopito, lime
- ◊ Karven Ginseng Gin, 40% 28
ginseng, lemon, orange

PORTUGAL

- ◊ Sharish Gin, 40% 32
lemon verbena, cinnamon, apple

SCOTLAND

- Hendrick's Orbium Gin, 43.4% 28
quinine, wormwood, cucumber
- ◊ Kilmahew Gin, 42% 26
orange peel, bramble leaf, rosehip
- Nàdar Gin, 43% 24
peas, lemongrass, citrus leaf

SOUTH AFRICA

- Musgrave Gin, 42% 24
cardamom, african ginger, grains of paradise

SWITZERLAND

- ◊ Ojo De Agua Dry Gin, 43% 32
mate, brandy, blackberry spirit

USA

- ◊ Automatic Sea Gin, 45% 32
nori, sage, lemongrass
- ◊ Battle Standard Standard Strength Gin, 45% 24
cardamom, coriander, cinnamon
- ◊ Bummers & Lazarus Dry Gin, 47% 26
liquorice, angelica, cinnamon
- ◊ Cold River Traditional Gin, 47% 26
angelica, cardamom, coriander
- ◊ Crater Lake Gin, 47.5% 28
juniper
- ◊ Lee Spirits Dry Gin, 45% 20
angelica, cardamom, lemon peel
- ◊ Letherbee Autumnal Gin, 48% 26
cranberry, rosemary, lemon peel

GRASSY
GREENNESS, TALL GRASS, MEADOW

AUSTRALIA	
◇ Darwin Gin, 40%	34
<i>kakadu plum, water lily, lemongrass</i>	
BELGIUM	
◇ Meyer's M2 Gin, 43%	36
<i>white asparagus, orris root, sage</i>	
CANADA	
◇ The Empiric Gin, 40%	24
<i>hops, lavender, lemon verbena</i>	
ENGLAND	
Hepple Gin, 45%	26
<i>douglas fir, bog myrtle, green juniper</i>	
FINLAND	
Kyrö Helsingin, 46.3%	38
<i>elderberry flower, wild chamomile, polypody root</i>	
Kyrö X Ki No Bi Gin, 43.7%	26
<i>caraway, yuzu, red shisho</i>	
GERMANY	
◇ Amato Wiesbaden Gin, 43.7%	26
<i>cucumber, tomato, quince</i>	
HUNGARY	
◇ Opera Gin, 44%	30
<i>citronella grass, lavender, poppy seed</i>	
INDIA	
Jaisalmer Handcrafted Gin, 43%	22
<i>darjeeling green tea, vetiver, lemongrass</i>	
NETHERLANDS	
Rutte Celery Gin, 43%	24
<i>celery, orange peel, cardamom</i>	
SCOTLAND	
◇ Eden Mill Hop Gin, 46%	28
<i>galaxy hops, lemon peel, juniper</i>	
Hendrick's Neptunia Gin, 43.4%	30
<i>elderflower, sea cucumber, sea kelp</i>	
SPAIN	
◇ LEVEL Gin, 44%	22
<i>cardamom, grapefruit, angelica</i>	
◇ Wint & Lila Gin, 40%	24
<i>orange blossom, cinnamon, peppermint</i>	
SWEDEN	
◇ Hernö Pink BTL Gin, 42%	32
<i>rose petal, strawberry, vanilla</i>	
Mackmyra Kreatör Organic Gin, 47.3%	28
<i>grape, elderberry, raspberry</i>	

SWITZERLAND	
◇ Studer Swiss Classic Gin, 40%	34
<i>lavender, lemongrass, ginger</i>	
◇ Studer Swiss Gold Gin, 40%	36
<i>citrus grass, lavender, ginger</i>	
TAIWAN	
Zhen Gin, 40%	38
<i>bhutanese juniper, coriander, osmanthus</i>	
THAILAND	
Saneha Gin, 40%	24
<i>sugarcane, makwean, ginger flower</i>	
USA	
◇ Nautical American Gin, 42%	22
<i>pacific kombu, spearmint, lemongrass</i>	
VENEZUELA	
Canaima Gin, 47%	24
<i>acai berry, uve de palma, copuazU</i>	
WALES	
◇ Wye Valley Gin, 42%	26
<i>elderflower, linden flowers, mugwort</i>	

BERRIES
PLUMP, ROUNDNESS, JAMMY

AUSTRIA	
◇ Hands On Gin, 46.5%	28
<i>blackcurrant, coriander leaves, orange peel</i>	
FINLAND	
Arctic Blue Gin, 46.2%	28
<i>wild arctic bilberry, cardamom, spruce needle</i>	
POLAND	
◇ Polugar No. 10 Russian Gin, 38.5%	28
<i>lingonberry, cloudberry, calamus</i>	
PORTUGAL	
◇ Edmundo Alvarinho-Infused London Dry Gin, 40%	38
<i>albariño grape, juniper</i>	
◇ Sharish Blue Magic Gin, 40%	34
<i>blue pea flower, ginger, raspberry</i>	
SOUTH AFRICA	
Blind Tiger Rarely Sighted Gin, 43%	24
<i>blackcurrant, grapefruit, angelica</i>	

MODERN - FRUITY

FRUITY

EXOTIC, AUDACIOUS, NOT FRUIT FLAVOURED

AUSTRALIA

Lawrenny Van Diemen's Gin, 42.5% 24
lime flower, almond, strawberry

Manly Spirits Co. Lilly Pilly Pink Gin, 40% 24
rosella, sea fig, blood orange

BELGIUM

◊ Belgin St. Cruyt Gin, 43% 28
forest berry, lavender, sage

◊ Buss No.509 Persian Peach Gin, 40% 28
peach, iris, vanilla

◊ Clover Gin, 40% 32
pear, clover leaf, lavender

◊ Copperhead x Scarfes Bar, 41% 32
apple, pine blossom, pine nut

CANADA

◊ Romeo's Gin, 46% 20
dill, lavender, almond

ENGLAND

◊ Crazy Gin, 41% 32
fruit lassi, black pepper, turmeric

Dodd's Gin, 49.9% 24
red raspberry leaf, bay laurel, honey

◊ Sacred Christmas Pudding Gin, 43.8% 26
christmas pudding, frankincense, juniper

◊ That Boutique-y Spit-Roasted Pineapple Gin, 40.1% 28
pineapple, cinnamon, nutmeg

◊ The Gin Kitchen Blushing Monkey Pink Gin, 48% 28
black grape, ginger, allspice

IRELAND

◊ Connacullin Irish Gin, 47% 34
elderberry flower, hawthorn berry, angelica

◊ Mór Irish Gin, 40% 22
rosemary, blackberry, cranberry

ITALY

◊ Gin Agricolo Evra, 47% 26
raspberry, mint, almond leaf

NETHERLANDS

◊ Sikkim Privee Premium Gin, 40% 26
red tea, cilantro, coriander

PHILIPPINES

◊ Ginebra San Miguel Premium Gin, 35% 20
juniper, coriander, berry

SCOTLAND

◊ Eden Mill Love Gin, 42% 28
rose petal, hibiscus, raspberry leaf

◊ Pilgrim's Original Gin, 40% 26
grapefruit, blackcurrant, liquorice

Porter's Orchard Gin, 40% 28
apple, pear, juniper

SPAIN

◊ Akori Gin, 42% 28
kumquat, ginger, dragon fruit

◊ Get Back Blue Gin, 40% 22
rose petal, tangerine, lemon peel

◊ Law Premium Gin, 44% 32
spanish cucumber, prickly pear, padron pepper

Mackmyra Lab + Distillery Organic Gin, 40% 22
elderflower, lingonberry, mango

SWITZERLAND

◊ ingenious! Summer Gin, 42% 40
blueberry, peach, jasmine flower

USA

Dry Fly Gin, 40% 22
apple, mint, hops

◊ Green House Artisan Gin, 40% 26
açai, cucumber, bergamot

OVERPROOF AND NAVY STRENGTH

Gin has a rich history within the British Royal Navy, for centuries it was issued to all ships sailing the high seas. Traditionally, to prove its strength and quality, it had to be able to wet and ignite gun powder. Over time it was deduced that the lowest proof for this experiment to succeed was 114 proof, or 57% abv (alcohol by volume). This higher proof makes the gin and the botanicals shine.

CITRUS

BRIGHT, ZINGY, REFRESHING

AUSTRALIA

- ◊ Botanic Australis Navy Strength Gin, 57% 36
lemon-scented gum, bunya nut, pepperberry
- Four Pillars Navy Strength Gin, 58.8% 26
fresh ginger, turmeric, native ginger lime
- Poor Toms Fool Strength Gin, 52% 24
liquorice, green cardamom, grapefruit peel
- Shetland Reel Up Helly AA Gin, 57% 28
rosemary, thyme, strawberry jam

BELGIUM

- ◊ Ginlus by Duin Gin, 50% 34
laurel, black pepper, lavender

ENGLAND

- ◊ Fords Officers' Reserve Gin, 54.5% 26
angelica, jasmine, cassia
- ◊ Mary Le Bone London Dry Gin, 50.2% 32
lemon balm, clove, lime flower
- Plymouth Navy Strength Gin, 57% 26
lemon peel, orris root, angelica

SCOTLAND

- ◊ Cadenhead's Classic Gin, 50% 24
coriander, seville orange peel, cinnamon

SWEDEN

- ◊ Hernö Navy Strength Gin, 57% 34
coriander, cassia, black pepper
- ◊ Strane Navy Strength London Dry Gin, 57.1% 40
lemon rind, cinnamon, liquorice

USA

- ◊ Battle Standard Navy Strength Gin, 57% 28
cardamom, coriander, cinnamon
- ◊ Leopold's Navy Strength American Gin, 57% 30
bergamot, orris root, cassia bark

FLORAL

BOUQUET, PERFUMED BLOOMS, PETALS

ENGLAND

- ◊ 57 London Dry Navy Strength Gin, 57% 28
savory, angelica, coriander
- Sipsmith VJOP Gin, 57.7% 28
juniper, coriander, orange peel

HERBAL

FRESH BUNCH, DRIED LEAVES, VEGETAL

AUSTRALIA

- ◊ Animus Classic Dry Gin, 50% 28
lemon myrtle, sarsaparilla, pepperberry
- ◊ Animus Macedon Dry Gin, 50% 28
lemon myrtle, sarsaparilla, pepperberry
- ◊ Loch Distillery The Weaver Gin, 50% 24
anise myrtle, cinnamon myrtle, mace
- Old Young's Common Gin, 57.5% 24
juniper
- Old Young's Six Seasons Gin, 50% 24
sea parsley, thryptomene, desert lime
- West Winds Broadside Gin, 58% 28
salt, wattleseed, sea parsley
- West Winds Cutlass Gin, 50% 24
bush tomato, coriander, cinnamon myrtle

BELGIUM

- ◊ Buss No.509 White Rain Gin, 50% 30
marjoram, verbena, angelica

ENGLAND

- ◊ Ancient Mariner London Cut Dry Gin, 50% 32
savory, coriander, angelica
- Gunroom Navy Gin, 57% 28
orange peel, lemon peel, angelica
- Hayman's Royal Dock Gin, 57% 24
coriander, cassia, nutmeg
- ◊ Kew Organic Explorers' Strength Gin, 57.3% 28
basil, violet, lavender

OVERPROOF AND NAVY STRENGTH - HERBAL . SPICED . EARTHY . FRUITY

- ◇ Twisted Nose Dry Gin, 52% 36
grapefruit zest, fennel seed, watercress

FINLAND

- Kalevala Navy Strength Gin, 50.9% 24
jerusalem artichoke, rosemary, sea buckthorn

JAPAN

- ◇ Ki No Bi Sei Gin, 54% 28
ginger, hinoki wood chip, green tea

NETHERLANDS

- ◇ Driftwood JVS Navy Gin, 55% 32
liquorice, orris, lemon zest

SCOTLAND

- ◇ Awa Navy Strength Scottish Gin, 57.2% 32
lime peel, mint, red clover

- ◇ Edinburgh Cannonball Navy Strength Gin, 57.2% 30
sichuan pepper, lemon peel, juniper

- Rock Rose Navy Strength Gin, 57% 28
rhodiola rose, rowanberry, sea buckthorn

USA

- ◇ Swallowtail Navy Strength Gin, 57% 24
angelica, cardamom, grains of paradise



AUSTRALIA

- ◇ Animus Ambrosian Gin, 50% 28
kaffir lime leaf, white sesame, fresh turmeric

- ◇ Animus Arboretum Gin, 50% 28
strawberry gum leaf, rosemary, bush tomato

BELGIUM

- ◇ GinGer by Duin Gin, 50% 36
galangal, lemon thyme, coriander

ENGLAND

- Cadenhead's Old Raj Blue Gin, 55% 28
saffron, almond powder, cinnamon

GERMANY

- Elephant Navy Strength Gin, 57% 26
pimento, devil's claw, buchu

KENYA

- Procera Red Dot Gin, 51% 40
oyster shell, elephant pepper, honey

NEW ZEALAND

- Dancing Sands Wasabi Gin, 58% 26
wasabi, orange, horopito

SRI LANKA

- Colombo Navy Strength Gin, 57% 24
sri lankan curry leaves, ginger root, coriander

SWEDEN

- ◇ Spirit of Hven Organic Navy Strength Gin, 57.1% 36
cinnamon, cassia, juniper

USA

- ◇ Conniption Navy Strength Gin, 57% 28
rosemary, caraway, fig

- ◇ Gun Club Gin, 50% 22
clove, nutmeg, cranberry

- Perry's Tot Navy Strength Gin, 57% 24
wild flower honey, cinnamon, juniper



AUSTRALIA

- Lawrenny 1818 Settlers Gin, 52.5% 26
rosemary, caraway, pimento

- Never Never Juniper Freak Gin, 52% 28
juniper, angelica, pepperberry

ENGLAND

- ◇ Tarquin's Navy Strength Limited Edition Gin, 57% 28
cinnamon, fresh orange, orris root

JAPAN

- ◇ Blanc De Noirs - Japanese Craft Gin, 50.6% 24
squid ink, mango, pine

USA

- ◇ Far North Gustaf Navy Strength Gin, 57% 28
cucumber, fennel seed, thyme



AUSTRALIA

- ◇ Archie Rose Distillers Strength Gin, 52.4% 32
fresh pear, honey, elderflower

BARREL-RESTED

When a gin has been stored in a wooden cask for a period of time, imparting some of the colour and character of said wood, it is classified as a barrel-rested gin. A sub-category that has boomed in recent years but has historical precedents. Once upon a time, all gins would have been stored and transported in a barrel!

CITRUS

BRIGHT, ZINGY, REFRESHING

- AUSTRALIA**
- ◇ Four Pillars Chardonnay Barrel Gin, 43.8% 24
fresh orange, candied ginger, coriander
 - Four Pillars Sherry Cask Gin, 43.8% 24
cassia, star anise, lavender
 - Manly Spirits Barrel Aged Gin, 45% 32
malted barley, sea lettuce, finger lime
- BELGIUM**
- ◇ Filliers Barrel Aged Dry Gin 28, 43% 32
vanilla, orange peel, liquorice
- COLOMBIA**
- Dictador Treasure Gin, 43% 24
limon mandarina peel, lemon peel, juniper
- ENGLAND**
- ◇ Henstone Rosè Gin, 44.9% 26
angels wreath, sweet orange peel, lemon kibble
 - ◇ That Boutique-y Double-Barrelled Gin, 46% 36
black pepper, grapefruit, bay leaf
- FINLAND**
- Kyrö Koskue Barrel-aged Gin, 42.6% 26
birch, meadowsweet, cranberry
- USA**
- ◇ Battle Standard Barrel Finished Gin, 45% 30
cardamom, coriander, cinnamon
 - ◇ No. 209 Sauvignon Blanc Barrel Reserve Gin, 46% 28
bay leaf, bergamot, cassia
 - ◇ Vapor Distillery Ginskey Barrel Rested Gin, 47% 28
orange peel, lemon peel, sencha tea
 - ◇ Wire Works Special Reserve American Gin, 43.9% 24
cranberry, spruce tip, angelica
- WALES**
- ◇ Eccentric Limbeck New Western Gin, 45% 28
tarragon, seville orange, orris root

FLORAL

BOUQUET, PERFUMED BLOOMS, PETALS

- CANADA**
- ◇ Wallflower Oaken Gin, 44% 28
cinnamon, lemon peel, lavender
- CHINA**
- ◇ Peddlers Barrel Aged Gin, 45.7% 28
sichuan pepper, buddha's hand, cubeb
- ENGLAND**
- Hayman's Family Reserve Gin, 41.3% 26
angelica, cinnamon, coriander
 - Hayman's Gently Rested Gin, 41.3% 24
angelica, cinnamon, coriander
 - ◇ Juni 93 Cask Aged Gin, 46.5% 30
coriander, cassia, juniper
- USA**
- ◇ Dry Fly Barrel Reserve Gin, 40% 24
mint, apple, lavender
 - ◇ Prescribed Spirits Barrel Finished Gin, 42% 24
cardamom, bergamot, cassia
 - ◇ Swallowtail Single-Barreled Gin, 44% 22
lavender, cardamom, orange peel

HERBAL

FRESH BUNCH, DRIED LEAVES, VEGETAL

- AUSTRALIA**
- ◇ Great Southern Ginnifer Gin, 49% 24
meen, peppermint, hot pepper
 - ◇ Never Never Dark Series Argo Gin, 42% 34
oolong, peppercorn, cinnamon
- FRANCE**
- Sorgin Yellow Gin, 42% 28
sauvignon blanc distillate, violet, broom flower
- ITALY**
- ◇ Berto Juniperus Cask Finish Gin, 43% 46
wormwood, rosemary, iris
 - ◇ Old Grifu Gin, 42% 26
sage, thyme, elicriso

BARREL-RESTED - HERBAL . SPICED

NETHERLANDS

- ◇ Brouwerij de Molen Gentle Gin, 38% 34
juniper

NEW ZEALAND

- ◇ The Source Pure Cardrona Barrel Aged Gin, 47% 28
rosehip, orange zest, lemon zest

SCOTLAND

- ◇ 57° SKYE Earth & Sea - Banyuls Cask Finish Gin, 43% 22
heather, smoked laminaria, sea kelp

SINGAPORE

- Suuankou Gin, 68% 38
ginseng, red dates, dried longan

SWEDEN

- ◇ Hernö Juniper Cask Gin, 47% 48
black pepper, cassia, vanilla

USA

- ◇ Breuckelen Glorious Oaked Gin, 45% 26
ginger, rosemary, grapefruit
- Corsair Barrel-Aged Gin, 46% 26
angelica, orris root, orange
- ◇ Golden Moon Cask Reserve Gin, 45% 32
mint, lavender, juniper
- ◇ Smooth Ambler Double Barrel Aged Gin, 45.9% 32
cardamom, caraway, star anise

WALES

- ◇ Da Mhile Oak Aged Gin, 42% 24
seaweed, coriander, mint



AUSTRALIA

- ◇ Old Young's Old B.A.G. Gin, 42% 32
lemon myrtle, aniseed, orange peel
- Prohibition Shiraz Barrel Aged Gin, 60% 30
blood orange, pink peppercorn, vanilla

CANADA

- ◇ Long Table Barrel Aged Gin, 44% 26
fennel seed, black pepper, coriander
- St. Laurent Vieux Gin, 47% 24
seaweed, grains of paradise, cubeb

COLOMBIA

- Dictador Ortoodoxy Gin, 43% 22
angelica, cinnamon, juniper

ENGLAND

- ◇ Abingdon Port Barrel-Aged Gin, 40% 28
cardamom, fennel, orange
- ◇ Beefeater Burrough's Reserve Oak Rested Gin, 43% 38
bitter almond, coriander, orris root
- Gunroom London Dry Aged Gin, 43% 24
cinnamon, nutmeg, savory

- ◇ Two Birds Sipping Gin, 47.3% 28
orris root, juniper, coriander

FRANCE

- ◇ Audemus Spirits Umami Oak Finished Gin, 42% 24
caper, parmesan cheese, juniper
- Fair Barrel Aged Gin, 42% 24
cardamom, calamus root, angelica

ICELAND

- ◇ An Dulaman Santa Ana Armada Strength Gin, 57% 34
sugar kelp, moss, dulce seaweed

IRELAND

- ◇ Shortcross Small Batch Cask Aged Gin, 44% 30
elderberry, clover, orange peel

NEW ZEALAND

- Dancing Sands Barrel Aged Gin, 48% 26
manuka, almond, liquorice

NEW ZEALAND

- ◇ Lubuski Aged Gin, 42% 24
licorice, cinnamon, anise

SCOTLAND

- ◇ Firkin Islay Cask Gin, 46% 40
angelica, orris root, coriander

SOUTH AFRICA

- ◇ Ginifer Barrel Aged Chili Infusion Gin, 43% 30
chili pepper, orange rind, juniper
- ◇ Pienaar & Son DAD Barrel Aged Gin, 43% 28
allspice, cassia, ginger

SPAIN

- ◇ Jodhpur Reserve London Dry Gin, 43% 32
coriander, ginger, grapefruit peel
- ◇ LEVEL Reserve Gin, 44% 24
grapefruit, orange blossom, cardamom
- ◇ Palma Oak Aged Spiced Gin, 40.4% 26
vanilla, cinnamon, cloves
- Santamania Reserva Gin, 41% 26
liquorice, almonds, wild rosemary

SWEDEN

- ◇ Hernö Sipping Sherry Cask Gin, 46.3% 62
coriander, cassia, indian black pepper
- ◇ Stockholms Bränneri Oak Gin, 45% 34
long pepper, orange peel, juniper

USA

- ◇ Bluecoat Barrel Reserve Dry Gin, 47% 22
lemon peel, angelica, coriander
- ◇ Bourbon Barreled Big Gin, 47% 30
pepperberry, grains of paradise, cassia
- Koval Barreled Gin, 47% 26
rose hip, coriander, angelica
- St. George Dry Rye Reposado Gin, 49.5% 26
black pepper, grapefruit peel, caraway

LUSCIOUS
DELICATE, VELVETY SWEETENED, SCRUMPTIOUS

- AUSTRALIA**
- ◇ Four Pillars Christmas Gin, 43.8% 24
christmas pudding, cinnamon, star anise
- ENGLAND**
- The London No. 1 Sherry Cask Gin, 43% 22
fino sherry, liquorice, bergamot
- ISRAEL**
- ◇ Milk & Honey Levantine Oak Aged Gin, 46% 30
verbena, chamomile, hyssop
- ITALY**
- ◇ Major Riserva Gin, 47% 36
piedmont cherry, peppermint, orange
 - Pigskin Wood Finish Gin, 40% 24
mastic, sage, myrtle
- PHILIPPINES**
- ARC Barrel Reserve Gin, 45% 24
chamomile, pomelo, calamansi
- USA**
- FEW Barrel Gin, 46.5% 26
vanilla, cassia, cloves
 - ◇ Griffon Chardonnay Barrel Aged, 45% 28
grains of paradise, meyer lemon, honeydew melon
 - ◇ No.209 Chardonnay Barrel Reserve Gin, 46% 28
cardamom, bergamot, cassia

NUTTY
RUSTIC, WOODY, SAVOURY EDGE

- AUSTRALIA**
- ◇ Süd Polaire Rare Oak Gin, 42% 36
kombu, grapefruit peel, pepperberry
- GERMANY**
- ◇ Monkey 47 Distiller's Cut 2020 Gin, 47% 40
mace, nutmeg, juniper
 - ◇ Windspiel Reserve Premium Dry Gin, 49.3% 42
lavender, coriander, cinnamon
- ENGLAND**
- ◇ Kipsi Rosé Gin, 41% 22
kentish morello, dark cherry, raspberry

EARTHY
DARK RICH SOIL, TURF, WET LEAVES

- AUSTRALIA**
- Giniversity Barrel Aged Gin, 49% 26
cardamom, cinnamon, orange peel
- GERMANY**

LUSCIOUS . NUTTY . EARTHY . GRASSY . FRUITY - BARREL-RESTED

- Elephant Cask Aged Gin, 52% 36
pimento berry, devil's claw, buchu
- ◇ Forest Quersus Gin, 42% 32
juniper, tangerine, pear
- ◇ Hoos Reserve Gin, 44.4% 30
pine, fennel seed, cardamom

GRASSY
GREENNESS, TALL GRASS, MEADOW

- ENGLAND**
- ◇ Ki No Bi Edition G Gin, 48.4% 32
yellow yuzu, japanese cypress, bamboo
- USA**
- ◇ No.209 Kosher For Passover Gin, 46% 28
cardamom, bergamot, cassia

FRUITY
NOT FRUIT FLAVOURED, EXOTIC, AUDACIOUS

- ENGLAND**
- ◇ Dancing Cows New Forest Oak-Aged Gin, 43% 28
hops, cardamom, angelica
 - ◇ Hart & Dart Gin, 47% 36
blood orange, wormwood, curry leaf
- GERMANY**
- ◇ Diamond Red Port Cask Finish Gin, 45% 26
juniper
 - Monkey 47 Barrel Cut Gin, 47% 32
pomelo, lemon balm, jasmine
- SCOTLAND**
- ◇ Garden Shed Côte-Rôtie Aged Gin, 43.5% 30
lavender, dandelion root, blackberry

OLD TOM

A style of gin popular in the 18th and 19th century in a time when techniques such as sweetening or the addition of extra botanicals were used to mask the flavour of poorly made (or dangerous) gins. Now it is back in a more craft iteration with variations including different sugars and wood ageing.

CITRUS

BRIGHT, ZINGY, REFRESHING

ENGLAND

- Dodd's Old Tom Gin, 46% 22
bay leaf, fennel, cardamom

FLORAL

BOUQUET, PERFUMED BLOOMS, PETALS

CANADA

- Cirka Gin375 Gin, 40% 28
rose petal, honey, mint

ENGLAND

- ◇ Hammer & Son Old English Batch No.2 Gin, 44% 28
orange peel, cassia, cinnamon

ITALY

- Winestillery Old Tom Gin, 42% 23
menthol, lemon peel, orange peel

SCOTLAND

- ◇ Crabbie's 1891 Old Tom Gin, 43% 24
orange peel, coriander, angelica
- ◇ The House of Botanicals Old Tom Gin, 47% 26
saffron, chamomile, muscovado sugar

WALES

- ◇ Eccentric Young Tom Gin, 46% 28
fennel seed, sunflower root, star anise

HERBAL

FRESH BUNCH, DRIED LEAVES, VEGETAL

- ◇ Jensen's Old Tom Gin, 43% 22
lavender, liquorice, orris root

NETHERLANDS

- Langley's Old Tom Gin, 45% 22
nutmeg, fennel seed, coriander

SCOTLAND

- Porter's Tropical Old Tom Gin, 40% 28
guava, passion fruit, white tea

- ◇ Tanqueray Old Tom Gin, 47.3% 28
angelica, coriander, liquorice

SPICED

PEPPERS, BAKING SPICES, FRAGRANT

CANADA

- ◇ Endeavour Old Tom Gin, 45% 26
mint, orange blossom, mulberry

FRANCE

- Citadelle No Mistake Old Tom Gin, 46% 24
cinnamon, fennel seed, cardamom

ICELAND

- ◇ Himbrimi Old Tom Gin, 40% 32
arctic thyme, honey, lemon peel

USA

- ◇ Greenhook Ginsmiths Old Tom Gin, 50.1% 26
cardamom, mace, coriander
- ◇ Valentine Liberator Old Tom Gin, 45.2% 26
black pepper, sweet red pepper, pimento

LUSCIOUS

DELICATE, VELVETY SWEETENED, SCRUMPTIOUS

ENGLAND

- ◇ City of London Old Tom Gin, 43.3% 26
juniper, coriander, angelica
 - ◇ Gin Lane 1751 Old Tom Gin, 40% 26
star anise, coriander, angelica
 - Hayman's Old Tom Gin, 40% 20
liquorice, coriander, orange peel
 - ◇ That Boutique-y Very Old Tom, 46.1% 38
bitter orange, liquorice, coriander
 - ◇ The Distillery Old Tom Gin, 47% 32
juniper, coriander, angelica
 - ◇ Two Birds Old Tom Gin, 40% 24
liquorice, orris root, coriander
- #### GERMANY
- Both's Old Tom Gin, 47% 26
liquorice, nutmeg, citrus peel

ITALY

Del Professore Authentic Crocodile Old Tom Gin, 45% 24
elderflower, pepper, vanilla

JAPAN

Ki No Tou Kyoto Old Tom Gin, 47% 46
black sugar, ginger, red shiso

SCOTLAND

◇ Makar Old Tom Gin, 43% 22
black pepper, liquorice, lemon peel

USA

◇ Ebb + Flow Old Tom Gin, 44% 24
elderflower, orange peel, angelica

NUTTY

RUSTIC, WOODY, SAVOURY EDGE

ENGLAND

◇ Sacred Old Tom Gin, 48% 28
liquorice, juniper, orange peel

EARTHY

DARK RICH SOIL, TURF, WET LEAVES

ENGLAND

◇ Hampshire Fine Old Tom Gin, 40% 24
calamus root, liquorice, orange peel

NORWAY

◇ Himkok Old Tom GIN, 41% 30
caraway seed, dill, coriander

SLOE GIN

Actually a gin liqueur, this is a traditional drink from the English countryside. Made from sloes, the plum-like fruit that grows on blackthorn hedgerows dividing old properties. Simply gin, sloe berries and sugar.

BERRIES

PLUMP, ROUNDNESS, JAMMY

AUSTRALIA

- ◇ McHenry Sloe Gin, 25% 24
sloe berry, quandong, mountain pepper leaf

AUSTRIA

- Leopold Organic Sloe Gin, 27% 34
sloe berry, juniper, lemon peel

ENGLAND

- ◇ Beckett's Sloe Gin, 29% 26
sloe berry, sweet orange peel, mint
- Cremorne Gentleman Badger's Sloe Gin, 26% 22
sloe berry, angelica, bitter orange peel
- ◇ Foxdenton Estate Sloe Gin, 27% 22
sloe berry, lime flower oil, orris root
- ◇ Hadrian's Wall Sloe Gin, 26% 22
sloe berry, chamomile, mint
- Hayman's Sloe Gin, 26% 20
sloe berry, lemon peel, nutmeg
- ◇ Lyme Bay Winery Reserve Liqueur Sloe Gin, 26% 22
sloe berry, lemon peel, angelica
- Plymouth Sloe Gin, 26% 20
sloe berry, sweet orange peel, liquorice
- Sipsmith Sloe Gin, 29% 22
sloe berry, liquorice, coriander
- Warner Edwards Harrington Sloe Gin, 30% 24
sloe berry, black pepper, green cardamom

GERMANY

- Elephant Sloe Gin, 35% 24
sloe berry, devil's claw, buchu
- Monkey 47 Sloe Gin, 29% 24
sloe berry, pomelo, lemon balm

ICELAND

- ◇ Boatyard Sloe Boat Gin, 29.8% 20
sloe berry, sweet gale, orris

NETHERLANDS

- Rutte Sloe Gin, 30% 22
sloe berry, galangal, gentian

SCOTLAND

- ◇ Gordon's Sloe Gin, 26% 20
sloe berry, ginger, orange peel
- ◇ Pickering's Sloe Gin, 30% 22
sloe berry, lime peel, clove

FRUITY

NOT FRUIT FLAVOURED, EXOTIC, AUDACIOUS

ENGLAND

- ◇ Ableforth's Sloe Gin, 33.8% 28
sloe berry, clove, orange peel
- Hepple Sloe & Hawthorn Gin, 32% 26
sloe berry, hawthorn, amalfi lemon peel

GENEVER

Not actually gin! We keep a hefty collection of this because it's important to the history of gin. This mostly Dutch spirit is considered the precursor to what we know as gin. It's kind of like a mix between unaged whisky and gin. It is sweet, and very cereal-like.

CITRUS

BRIGHT, ZINGY, REFRESHING

BELGIUM

- ◇ Belegen Jenever Stokerij Wissels, 38% 22
juniper

NETHERLANDS

- ◇ De Borgen Holland Gin, 40.8% 26
wormwood, star anise, elderflower
- ◇ De Ooievaar Roggenaer Genever, 40% 26
juniper, lemon zest
- ◇ Legner 100% Jenever, 30% 22
juniper, lemon peel, black pepper
- Old Duff Genever, 40% 22
orange peel, star anise, liquorice
- ◇ Onder de Boompjes 100% Maltwine Genever, 40% 22
juniper, mandarin peel
- Rutte Old Tom Genever, 38% 18
wormwood, ginger, orange leaf
- ◇ Van Wees Korenwijn Rembrandt Genever, 40% 22
juniper, coriander, lemon peel

HERBAL

FRESH BUNCH, DRIED LEAVES, VEGETAL

NETHERLANDS

- Bobby's Schiedam Jenever, 38% 22
cubeb, lemongrass, rose hip
- ◇ Bokma 5 Year De Vijf Jaren Genever, 38% 24
clove, star anise, dill
- ◇ Bokma Oude Friesche Genever, 38% 26
clove, star anise, dill
- ◇ Boomsma Jonge Pure Graanjenever, 35% 20
juniper, coriander, lemon peel
- ◇ Floryn Jonge Jenever, 35% 22
ginger, vanilla, pepper
- ◇ Goblet Jonge Graanjenever, 35% 22
juniper, coriander, fennel seed
- ◇ Ketel 1 Jenever, 35% 20
pear, clove, mandarin peel

- ◇ Notaris XO Genever, 35% 28
juniper
- Onder de Boompjes Old Dutch Genever, 38% 20
mandarin peel, juniper
- ◇ Van Wees Loyaal 5 Yr. Zeer Oude Genever, 40% 30
juniper, herb bouquet
- ◇ Van Wees Roggenaer 3 Year Genever, 40% 28
juniper, herb bouquet
- ◇ Wynand Fockink Rogge Jenever, 38% 30
juniper, coriander, star anise
- ◇ Zuidam Young Grain Genever, 35% 22
liquorice, aniseed, juniper

SPICED

PEPPERS, BAKING SPICES, FRAGRANT

BELGIUM

- ◇ Filliers' 38% (5 Year Old) Oude Graanjenever, 38% 36
cardamom, juniper, orange peel
- ◇ Huisjenever & Dreupelkot Korenwijn Genever, 38% 24
juniper

NETHERLANDS

- ◇ Before Gin Genever, 38% 22
cinnamon, aniseed, juniper
- ◇ Bols Jonge Graanjenever, 35% 22
apricot seed, learwyt seed, ginger
- Bols Zeer Oude Genever, 35% 20
pine sap, cumin, juniper
- ◇ By The Dutch Old Genever, 38% 22
lemon peel, coriander, star anise
- ◇ Echte Oude Friesche Genever, 38% 22
juniper
- ◇ Hooghoudt Jonge Dubbele Graan Jenever, 35% 22
wormwood, pepper, orange peel
- ◇ Rutte & Zn Jonge Graanjenever, 35% 22
angelica, coriander, orris root
- ◇ Rutte & Zn Oude 5 Jenever, 38% 22
angelica, coriander, orris root
- ◇ Van Wees Amsterdamsche Oude Genever, 35% 24
juniper, cinnamon, clove

GENEVER - SPICED . LUSCIOUS . NUTTY . EARTHY . GRASSY . BERRIES

- ◇ Verhoeven Jonge Graan Genever, 35% 22
coriander, liquorice, black pepper
- ◇ Zuidam Korenwijn 1 Year Genever, 38% 26
juniper, liquorice, aniseed

USA

- ◇ FEW Publican Genever, 45% 28
coriander, rose hip, lemon peel

LUSCIOUS

DELICATE, VELVETY SWEETENED, SCRUMPTIOUS

BELGIUM

- ◇ Filliers 1997 Vintage Grain Genever, 43% 32
juniper
- ◇ Filliers' 15 Year Old Oude Graanjenever, 38.6% 30
cinnamon, liquorice, mint

NETHERLANDS

- ◇ Blaankenheim & Nolet Oude Jenever, 38% 30
liquorice, star anise, vanilla
- ◇ Bols Corenwyn Genever, 40% 32
juniper, vanilla, clove
- ◇ De Borgen Dutch Cornwyn Genever, 38% 22
caraway, fennel, sweet woodruff
- ◇ Dubbel Gebeidi Zeer Oude Genever, 40% 24
citrus, vanilla, liquorice
- ◇ Onder de Boompjes 10% Genever, 35% 20
vanilla, lavender, angelica
- ◇ Oud Amsterdam Jonge Graan Genever, 35% 22
juniper
- ◇ Van Wees Jonge Graangenever, 35% 22
juniper, coriander, cubeb
- ◇ Zuidam 1 Year Rogge Genever, 35% 22
juniper, liquorice, aniseed
- ◇ Zuidam 3 Year Zeer Oude Genever, 38% 28
juniper, liquorice, aniseed
- ◇ Zuidam 5 Year Zeer Oude Genever, 38% 30
juniper, liquorice, aniseed

USA

- ◇ Chief Gowanus Gin, 44% 22
cluster hops, juniper

NUTTY

RUSTIC, WOODY, SAVOURY EDGE

NETHERLANDS

- ◇ Bols Genever 100% Malt Spirit, 47% 38
juniper
- ◇ Old Duff 100% Malt Wine Genever, 45% 24
juniper, bramling hops
- ◇ Van Kleef Korenwyn Genever, 38% 26
juniper, herb bouquet

- ◇ Van Wees Roggenaer 15 Year Genever, 40% 48
juniper, herb bouquet

EARTHY

DARK RICH SOIL, TURF, WET LEAVES

NETHERLANDS

- ◇ Bols Genever, 42% 20
hops, ginger, coriander
- ◇ Olifant Jonge Graanjenever, 35% 22
juniper, coriander, liquorice
- ◇ Oud Amsterdam Dubbel Gebeide Genever, 41% 22
juniper, star anise, citrus
- ◇ Van Wees 15 Year Zeer Oude Genever, 42% 36
juniper

GRASSY

GREENNESS, TALL GRASS, MEADOW

NETHERLANDS

- ◇ Bols 6 Year Old Corenwyn Genever, 40% 32
coriander, dill, vanilla
- ◇ Hoppe Jonge Jenever, 35% 22
juniper

USA

- ◇ Anchor Genevieve Genever-Style Gin, 47.3% 30
coriander, liquorice, cubeb

BERRIES

PLUMP, ROUNDNESS, JAMMY

NETHERLANDS

- ◇ Rutte Paradyswyn Jenever, 37.9% 36
apple, cherry, coriander
- ◇ Van Wees Bessen Jenever, 20% 22
juniper, blueberry, blackberry

RARE & COLLECTABLE

The liquid history of Gin, in drinkable form! We have scoured the globe to bring you bottles from decades and even generations past, to see how Gin has evolved while remaining true to its heritage. Compare the new with the old—toast to a significant date in your own history. Or, close your eyes and transport yourself to a different age while sipping on these rare treasures.

CANADA

- ◇ Hiram Walker Crystal London Dry Gin (1960), 40%
unknown london dry 80

ENGLAND

- ◇ Beefeater London Dry (1990), 47%
unknown london dry 60
- ◇ Booth & Co. Superior Old Tom Gin (1926-36), unknown
unknown old tom 350
- ◇ Booth's High & Dry London Dry Gin (1940), 45%
unknown london dry 180
- ◇ Booth's Finest Dry Gin (1961), 40%
juniper, coriander, angelica london dry 108
- ◇ Coates & Co.'s Plym-Gin Dry Gin (1930), 44.5%
unknown london dry 300
- ◇ Coates & Co.'s Plym-Gin Dry Gin (1980), 40%
unknown london dry 60
- ◇ Gilbey's London Dry Gin (1949-1959), 46.2%
orange zest, angelica, orange peel london dry 132
- ◇ Gordon's Special Dry London Gin (1930), 40%
unknown london dry 180
- ◇ Gordon's London Dry Gin (1950s), 40%
ginger, angelica, orange peel london dry 128
- ◇ Gordon's London Dry Gin (1960s), 40%
ginger, angelica, orange peel london dry 90
- ◇ Gordon's Special Old Tom Gin (1950), unknown
unknown old tom 320
- ◇ Gordon's London Dry Gin (1990s), 47.3%
unknown london dry 54
- ◇ Gordon's London Dry Gin (1990s), 47.3%
unknown london dry 80
- ◇ Grant's Special London Extra Dry Gin (1980s), 37.5%
unknown london dry 60
- ◇ Justerini & Brooks London Dry Gin (1950s), unknown
unknown london dry 100
- ◇ J. & W. Nicholson Finest London Dry Gin (1970s), 45%
unknown london dry 70
- ◇ Macpherson's White Crystal Finest Dry London Gin (1930s), 47%
unknown london dry 188

◇	Nicholson's Finest London Dry Gin (1920s), unknown <i>unknown</i>	london dry	374
◇	R. Jackson & Sons Old Crown Gin (1930s), unknown <i>unknown</i>	london dry	178
◇	Seager's Extra Dry Gin (1940s), 40% <i>coriander, angelica, lemon peel</i>	london dry	160
◇	Southwark Distillers Cruiser London Dry Gin (1970s), 40% <i>unknown</i>	london dry	78
	ITALY		
◇	A.A. Baker's Finest Dry Gin (1960s), 43% <i>unknown</i>	london dry	90
◇	Buton Dry Gin (1950s), 40% <i>unknown</i>	london dry	128
◇	Buton Red Hills London Dry (1970s), 40% <i>juniper</i>	london dry	80
◇	E. Martinazzi & Co. Dry, 45% <i>unknown</i>	london dry	180
◇	Frescura Ginepro Liquore Secco Gin (1930s), 45% <i>juniper</i>	london dry	188
◇	Luxardo Dry Gin (1960s), 40% <i>cinchona, cinnamon, bitter orange</i>	london dry	106
◇	Martini & Rossi "Bosford" Dry Gin (1970s), 43% <i>unknown</i>	london dry	88
◇	Martini & Rossi Bosford London Dry Gin (1960s), 43% <i>angelica, lemon peel, orange peel</i>	london dry	108
	JAPAN		
◇	KKi Noh Bi Gin Cask Aged Kyoto Dry Gin, 48% <i>yuzu, bamboo leaf, green shansho</i>	barrel-rested	128
	NETHERLANDS		
◇	Bols Silver Top Dry Gin (1930), unknown <i>cassia, coriander, orange peel</i>	london dry	250
◇	Pheysey's Gin (1940s), 40% <i>unknown</i>	london dry	148
◇	Wynand Fockink Genever (1900s), 40% <i>juniper, star anise, coriander</i>	genever	238
	SCOTLAND		
◇	Alexander Muir's Ascot Finest London Dry Gin (2000s), 37.5% <i>unknown</i>	london dry	40
◇	Gordon's Special Dry London Gin (2000s), 38% <i>ginger, angelica, orange peel</i>	london dry	42
◇	Grant's Special Dry Gin (1970s), 40% <i>unknown</i>	london dry	88
◇	W. & A. Gilbey's Crystal Dry Gin (1930s), 40% <i>unknown</i>	london dry	280
	SPAIN		
◇	Lopez Hermanos Kintong's Gina Seca Gin (1960s), 40% <i>unknown</i>	london dry	98

USA

- ◇ Bell Sec Gin, ME Bellows & Co. (1900-1910), unknown
unknown london dry 380
- ◇ Continental Distilling Co. Dixie Bell London Dry Gin (1940), 45%
unknown london dry 250
- ◇ Fleischmann's White Tavern Distilled Dry Gin (1940), 45%
unknown london dry 150



FINE SPIRITS OF THE WORLD

WHISK(E)Y

One of our other great spirituous loves is the world of fine whiskies. At ATLAS, we maintain a rich, respectful selection of Scotch, Irish, Japanese and American whiskies. We are particularly proud to offer a diverse range of single malts from all regions and of a broad range of age statements. From sherry cask finishes to smoke-driven malts, we can propose a whisk(e)y for all palates and occasions. *Sláinte!*

USA, Bourbon

Buffalo Trace Bourbon, 40%	18
Bulleit Bourbon, 45%	18
Colonel E.H. Taylor Small Batch, 50%	40
Elijah Craig Small Batch, 47%	18
Four Roses Small Batch Bourbon, 45%	20
Four Roses Single Barrel Bourbon, 50%	28
High West American Prairie Bourbon, 46%	24
Knob Creek Kentucky Straight Bourbon, 40%	26
Maker's Mark Bourbon, 45%	18
Michter's US*1 Small Batch Bourbon, 45.7%	20
□ Pappy Van Winkle Family Reserve 23 Year Bourbon, 47.8%	550
Wild Turkey Bourbon, 40.5%	18
Willet Pot Still Reserve Bourbon, 47%	22
Woodford Reserve Bourbon, 45.2%	24

USA, Rye

Bulleit Rye Whiskey, 45%	18
High West Double Rye Whisky, 46%	26
Knob Creek Rye Whiskey, 50%	26
Michter's 10 Year Single Barrel Straight Rye Whiskey, 46.4%	52
Michter's US*1 Single Barrel Rye Whiskey, 42.4%	22

The □ symbol denotes special bottles from the Family Collection.

Michter's US*1 Single Barrel Rye Whiskey Barrel Strength, 57%	38
Old Potrero Rye Whiskey, 48.5%	52
Rittenhouse Rye 100 Whiskey, 50%	18
Sazerac 6 Year Old Rye Whiskey, 45%	24
Vulson White Rhino Rye Spirit, 41%	20
Willett 6 Year Single Barrel Cask Strength Rye Whiskey, 58.7%	32
Wild Turkey Straight Rye Whiskey, 40.5%	20
USA, Other	
Balcones Baby Blue Corn Whiskey, 46%	48
Death's Door White Whiskey, 40%	18
High West Campfire Whiskey, 46%	22
Jack Daniel's Tennessee Whiskey, 40%	18
Michter's Small Batch American Whiskey, 41.7%	20
Michter's US*1 Sour Mash, 43%	22
St. George "Baller" Whiskey, 47%	40
Westward Whisky, 45%	22
Canadian Whiskey	
Canadian Club, 40%	18
Lot 40 Rye, 43%	24
Irish Whiskey	
Jameson Irish Whiskey, 40%	18
Redbreast 12 Year Pot Still Irish Whiskey, 40%	22
Redbreast 15 Year Pot Still Irish Whiskey, 46%	26
Teeling Kyro Rye Gin Cask Finish Irish Whiskey, 46%	26
Japan, Blended Whisky	
Hibiki 17 Year, 43%	256
Hibiki 21 Year, 43%	280
Hibiki "Japanese Harmony", 43%	34
Hibiki "Mellow Harmony", 40%	225
□ Hibiki Special Bottle Collection 2012, 21 Year, 43%	350
□ Hibiki Special Bottle Collection 2013 "Aritayaki", 21 Year, 43%	250
□ Hibiki Special Bottle Collection 2013 "Kutaniyaki", 21 Year, 43%	250
□ Hibiki Special Bottle Collection 2015 "Aritayaki", 30 Year, 43%	450
Nikka All Malt, 40%	32
Nikka From The Barrel, 51.4%	24
Japan, Single Malt	
Hakushu 12 Year, 43%	56
Hakushu 18 Year, 43%	262
Hakushu Distiller's Reserve, 43%	36
□ Karuizawa "Cask Strength 5th Release", 61%	300
□ Karuizawa "Cask Strength 6th Release", 59.5%	300

□ Karuizawa “Cask Strength 7th Release”, 60.5%	300
□ Karuizawa “Cask Strength 8th Release”, 60.1%	300
□ Karuizawa “Cask Strength 9th Release”, 59.6%	300
□ Karuizawa “Cask Strength 10th Release”, 59.7%	300
□ Karuizawa “Cask Strength 11th Release”, 59.2%	300
□ Karuizawa “Cask Strength 12th Release”, 59.2%	300
□ Karuizawa “Cask Strength 13th Release”, 59.6%	300
□ Karuizawa “Cask Strength 14th Release”, 59.7%	300
□ Karuizawa “Geisha” Single Cask Sherry Butt 16 Year No. 125, 61.5%	325
□ Karuizawa “Geisha” Single Cask Sherry Butt 17 Year No. 7436, 60.6%	325
□ Karuizawa “Geisha” Single Cask Sherry Butt 26 Year No. 7402, 60.6%	360
□ Karuizawa “Black” Single Cask Sherry Butt 16 Year No. 2332, 58.5%	325
□ Karuizawa “Blue” Single Cask Sherry Butt 16 Year No. 7221, 59%	325
□ Karuizawa “Green” Single Cask Sherry Butt 15 Year No. 2339, 61.1%	325
□ Karuizawa “Pink” Single Cask Sherry Butt 17 Year No. 895, 58.6%	325
□ Karuizawa “Noh” Single Cask Sherry Butt 15 Year No. 2326, 62.2%	345
□ Karuizawa “Noh” Single Cask Sherry Butt 21 Year No. 6149, 63.6%	425
□ Karuizawa “Noh” Single Cask Sherry Butt 22 Year No. 7460, 62.3%	450
Nikka Taketsuru 21 Year Old, 43%	260
Yamazaki 18 Year, 43%	372
Yamazaki 12 Year, 43%	54
Yamazaki Distiller’s Reserve, 43%	38
Japan, Other Whisky	
Nikka Coffey Grain, 45%	26
Nikka Coffey Malt, 45%	30
Suntory “The Chita”, 43%	24
India	
Amrut Fusion, 50%	22
Taiwan	
Kavalan Solist Sherry Cask, 57.8%	44
□ Kavalan “Solist” Single Cask Ex-Bourbon (2008), 57.8%	100
Scotland, Blended Whisky	
□ Ballantine’s 12 Year (1980s), 43%	100
□ Ben Alder Finest Scotch Whisky (1990s), 40%	90
□ Black And White “Buchanan’s Choice” (1960s), 43%	150
□ Black Jack Rare Old Scotch Whisky (1980s), 40%	90
□ Blairmhor “Selected Quality” Pure Malt (1980s), 40%	90
□ Buchanan’s Reserve 12 Year (1970s), 43%	100
□ Calvary (1970s), 40%	90
□ Campbeltown Loch (2009), 40%	90
□ Carnaby St. 4 Year (1970s), 43%	90
□ Chequers 12 Year (1980s), 40%	90
Chivas Regal 12 Year, 40%	20

Chivas Regal Royal Salute 21 Year, 40%	60
□ Clan Robertson (1960s), 43%	90
□ Clanroy (1970s), 43%	90
□ Compass Box "Asyla" (First Release), 43%	100
□ Compass Box "Eleuthera" All Malt (First Release), 46%	100
□ Cutty Sark (1980s), 40%	100
□ Dalvegan Old Highland Malt 10 Year (1970s-1980s), 43%	100
□ Defender "From Those Who Build The World", 40%	90
□ Dewar's White Label (1970s), 40%	100
□ Glen Dowan Special Reserve, 40%	90
□ Grand Old Parr 12 Year (1980s), 43%	100
□ Glen Orchy Pure Malt 8 Year (2005), 40%	90
□ Glenfairn Pure Malt 8 Year (1980s), 40%	90
□ Grant's (1980s), 40%	100
□ Highland Fusilier Finest 8 Year (1970s), 40%	90
□ Highland Queen (1970s), 43%	90
□ His Excellency Special Reserve, 43%	90
□ House of Scotland Special Reserve 12 Year (1970s), 43%	90
□ Inverness Cream (1980s), 43%	90
□ Islay Mist 8 Year (1990s), 40%	90
□ Isle Of Skye 8 Year (2009), 40%	90
Johnnie Walker Black Label, 40%	18
Johnnie Walker Blue Label, 40%	50
Johnnie Walker Gold Label, 40%	20
□ Kintore, 43%	90
□ Macleay Duff "Antique" (1980s), 40%	90
□ Macphail's Pure Malt 15 Year (1980s), 40%	100
Monkey Shoulder Blended Malt, 40%	18
Monkey Shoulder Smokey Monkey, 40%	26
□ The Antiquary "Millennium Edition" 21 Year, 40.8%	125
GlenDronach Peated Whisky, 46%	22
Scotland, Grain Whisky	
□ Black Barrel Single Grain (2000s), 40%	90
Scotland, Single Malt Whisky	
□ Aberlour-Glenlivet Campbell's Distillery Ltd. 8 Year (1965), 50%	150
Auchentoshan 12 Year, 40%	26
Auchentoshan Three Wood, 43%	28
Ardbeg 10 Year, 46%	22
Balvenie Caribbean Cask 14 Year, 43%	36
Balvenie DoubleWood 12 Year, 40%	28
Balvenie PortWood 21 Year, 40%	92
□ Blairfindy 40 Year "Blairfindy Raw Cask" Blackadder No.4711, 55%	200
Bowmore 12 Year, 40%	22

□ Bowmore "Bicentenary For Fecchio & Frassa", 56.2%	800
□ Bowmore Gold Label OB 12 Year (1980s), 43%	150
□ Bowmore Gold Label "De Luxe" OB (1980s), 43%	150
Bruichladdich The Classic Laddie, 50%	24
Caol Ila 12 Year Old Islay Malt, 43%	25
□ Clynelish-Brora 12 Year Ainslie & Heilbron Ltd., 43%	250
□ Dalmore 8 Year Black Label (1970s), 43%	250
Dalwhinnie 15 Year Single Malt, 43%	28
□ Dufftown 13 Year James Macarthur's Reserve, 59.6%	100
□ Glen Avon 5 Year Fine & Old, 40%	100
□ Glen Grant 10 Year (1958), 45%	250
□ Glendronach 19 Year "The Birds Series" (1990), 43%	390
□ Glenfiddich 8 Year "Straight Malt" (1960s), 43%	300
Glenfiddich 12 Year, 40%	28
Glenfiddich 15 Year Solera Reserva, 40%	32
Glenfiddich Ancient Reserve 18 Year, 40%	46
Glenfiddich 21 Year, 40%	76
Glenlivet 12 Year, 40%	22
Glenlivet 18 Year, 43%	38
□ Glenlivet "Special Export Reserve" George & J.G. Smith Ltd, 43%	250
□ Glenkeith-Glenlivet 12 Year "The Flower Series" Duthie for Samaroli (1969), 46%	250
□ Glenmorangie "Pure Old" Sherry Cask Finish (1963), 43%	550
□ Glenmorangie Single Barrel Vintage Cask (1972), 46%	265
Glenmorangie Quinta Ruban, 46%	28
□ Highland Park 12 Year "From The Islands Of Orkney", 43%	200
Highland Park 12 Year, 43%	26
Highland Park 18 Year, 43%	46
□ Inchgower "From The House Of Bells" 12 Year, 43%	150
Lagavulin 16 Year, 43%	32
Laphroaig 10 Year, 40%	22
□ Laphroaig 15 Year (2005), 43%	175
Laphroaig PX Cask, 48%	42
□ Longmorn 16 Year Natural Cask Strength, 58.5%	350
□ Macallan 8 Year (1970s), 43%	250
□ Macallan 10 Year (1970s), 43%	225
□ Macallan 12 Year (1970s), 43%	200
Macallan 12 Year, 43%	28
□ Macallan 25 Year "Anniversary Malt Series" (1991), 43%	750
□ Macallan 12 Year "Official Whisky Of Bicentenary Of French Revolution" (1989), 43%	275
□ Macallan "Special Reserve" 1st Edition Label (1985), 43%	700
□ Macallan Vintage 18 Year (1956), 46%	700
□ Macallan Vintage 18 Year (1957), 46%	700
□ Macallan Vintage 18 Year (1958), 46%	700
□ Macallan Vintage 18 Year (1959), 46%	700
□ Macallan Vintage 18 Year (1960), 46%	700

□ Macallan Vintage 18 Year (1961), 46%	600
□ Macallan Vintage 18 Year (1962), 46%	600
□ Macallan Vintage 18 Year (1963), 43%	600
□ Macallan Vintage 18 Year (1964), 43%	600
□ Macallan Vintage 18 Year (1965), 43%	550
□ Macallan Vintage 18 Year (1966), 43%	550
□ Macallan Vintage 18 Year (1967), 43%	550
□ Macallan Vintage 18 Year (1968), 43%	550
□ Macallan Vintage 18 Year (1969), 43%	550
□ Macallan Vintage 18 Year (1970), 43%	550
□ Macallan Vintage 18 Year (1971), 43%	550
□ Macallan Vintage 18 Year (1972), 43%	525
□ Macallan Vintage 18 Year (1973), 43%	525
□ Macallan Vintage 18 Year (1974), 43%	525
□ Macallan Vintage 18 Year (1975), 43%	525
□ Macallan Vintage 18 Year (1976), 43%	475
□ Macallan Vintage 18 Year (1977), 43%	475
□ Macallan Vintage 18 Year (1978), 43%	450
□ Macallan Vintage 18 Year (1979), 43%	450
□ Macallan Vintage 18 Year (1980), 43%	450
□ Macallan Vintage 18 Year (1981), 43%	375
□ Macallan Vintage 18 Year (1982), 43%	375
□ Macallan Vintage 18 Year (1984), 43%	375
□ Macallan Vintage 18 Year (1985), 43%	375
□ Macallan Vintage 18 Year (1986), 43%	375
□ Milburn 11 Year “The Flower Series” Duthie For Samaroli (1970s), 46%	200
Oban 14 Year, 43%	26
Old Pulteney 12 Year Old, 46%	28
Port Charlotte 10 Year Islay Whisky, 50%	28
□ Springbank 5 Year “Black Label” (1970s), 43%	300
□ Springbank 15 Year “Black Label” (1970s), 46%	300
□ Strathisla 37 Year “Licensed Bottling” Gordon & MacPhail (2011), 43%	400
□ Strathisla-Glenlivet 15 Year (Bottled For Pinerolo Italy), 40%	250
Talisker 10 Year, 45.8%	20
Talisker 18 Year, 45.8%	44
□ Talisker 30 Years Old (1953), 40%	550
Talisker Storm, 45.8%	36
□ Teaninich 22 Years “The Bouquet Series” Samaroli (1959), 46%	300

BRANDY



Grape-based

L'Encantada 25 Year Old Armagnac, France, 49.5%	30
Cardenal Mendoza Brandy de Jerez, Spain, 40%	20

Baron Otard XO Cognac, France, 40%	54
Delamain Pale & Dry Cognac, France, 25%	40
□ Hennessy VSOP Cognac (1960s), France, 42%	187
□ Hennessy XO Cognac (1970s), France, 40%	230
Hine Cigar Reserve Cognac, France, 40%	50
Martell Cordon Bleu Cognac, France, 40%	60
Martell VOP, France, 40%	25
□ Martell VOP “3 Stars” Cognac (1960s), France, 40%	250
Pierre Ferrand 1840 Cognac, France, 45%	18
Pierre Ferrand Abel 45 Year Cognac, France, 40%	80
Pierre Ferrand Réserve 20 Year Cognac, France, 40%	32
□ Remy Martin Fine Champagne VSOP Cognac (1960s), France, 40%	225
□ Remy Martin Louis XIII Cognac (1980s), France, 40%	450
Remy Martin VSOP Cognac, France, 40%	18
Remy Martin XO Cognac, France, 40%	58
Cocchi Grappa, Italy, 40%	18
Cocchi Grappa Dorée, Italy, 40%	20
BarSol Pisco, Peru, 41.3%	18

Other Fruit-based

Laird’s 100 Proof Straight Applejack, USA, 40%	22
Laird’s Jersey Lightning White Apple Brandy, USA, 40%	18
Comte Louise de Lauriton 2004 Domfrontais Calvados, France, 40%	24
Daron Fine Calvados, France, 40%	18
Luxardo Slivovitz Plum Brandy, Italy, 40%	18
Luxardo Williams Pear Brandy, Italy, 40%	18
St. George Raspberry Eau de Vie Brandy, USA, 40%	20

SUGARCANE



English Heritage

Appleton Estate 8 Year Reserve Rum, Jamaica, 43%	20
Banks 5 Year Rum, Caribbean, 43%	18
English Harbour 5 Year Old, Antigua, 40%	24
Equiano Light Rum, Barbados, 43%	24
Plantation Pineapple Stiggin’s Fancy Rum, Caribbean, 40%	18
Gosling’s Black Seal Rum, Bermuda, 40%	18
Plantation 3 Stars Rum, Barbados, 41.2%	18
Plantation Barbados 5 Years Rum, 40%	22
Hampden Overproof, Jamaica, 60%	30
Rum Fire, Jamaica, 63%	28
Rum Nation Jamaica White Pot Still, Jamaica, 57%	24
Tiki Lovers White Rum, Caribbean, 50%	24

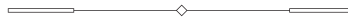
Spanish Heritage

Caña Brava 7 Year Rum, Panama, 45%	26
Bacardi Reserva Ocho, Puerto Rico, 40%	24
Havana Club 3 Year Rum, Cuba, 40%	18
Havana Club 7 Year Rum, Cuba, 40%	20
El Dorado 12 Year Rum, Guyana, 40%	22
Ron Colón Salvadoreño Rum, El Salvador, 55.5%	24
Ron Zacapa Centenario 23 Rum, Guatemala, 40%	22
Diplomático Ambassador Rum, Venezuela, 47%	58
Diplomático Distillery Collection Barbet Column Stilled, Venezuela, 47%	32
Diplomático Distillery Collection Batch Kettle Still, Venezuela, 47%	32
Diplomático Planas Rum, Venezuela, 47%	18
Diplomático Mantuano Rum, Venezuela, 40%	18
Diplomático Reserva Exclusiva Rum, Venezuela, 40%	20
Matusalem 15 Gran Reserva, Cuba, 40%	24

French Heritage/ Agricole-Style/ Cachaça

Maracatu Cachaça, Brazil, 38%	22
Clairin Communal, Haiti, 43%	24
Neisson Le Rhum par Neisson, Martinique, 52.5%	24
Clairin Casimir: Jesse Vida Selection, Haiti, 49.7%	26
Cachaca 51, Brazil, 40%	24

AGAVE



Tequila, Mexico

Altos Olmeca Blanco, 40%	20
Altos Olmeca Reposado, 40%	20
ArteNOM 1579 Organic Blanco Tequila, 40%	24
Clase Azul Reposado Tequila, 40%	80
Don Julio Reposado Tequila, 57%	30
Fuenteseca 12 Year Tequila, 45%	70
Los Arcos El Valle Blanco Tequila, 42.5%	20

Other Agave, Mexico

Del Maguey Vida Mezcal, 42%	18
Del Maguey Chichicapa Mezcal, 46%	26
Del Maguey Crema de Mezcal, 40%	22
Del Maguey Santa Catarina Minas Arroqueno Mezcal, 49%	38
Del Maguey Wild Papalome Mezcal, 48%	36
Los Danzantes Pechuga Mezcal, 48%	28
Los Danzantes Arte 2014 Mezcal, 47%	22

Montelobos Joven Mezcal, 43.2% 22

VODKA

Tried and True, France, 40% 18
Belvedere Vodka, Poland, 40% 20
Grey Goose Vodka, France, 40% 22
Skyy Vodka, USA, 40% 18
The View Vodka, Poland, 40% 22

ABSINTHE

Hendrick's Absinthe, Scotland, 48% 26
St. George Verte Absinthe, USA, 60% 26
Tempus Fugit Duplais Swiss Absinthe Blanche, Switzerland, 60% 28

VERMOUTH

Lillet Blanc Vermouth, France, 17% 14
□ Noilly Prat 1930s Dry Vermouth, France, 16% 120
□ Noilly Prat 1970s Extra Dry Vermouth, France, 18% 120
Noilly Prat Dry Vermouth, France, 18% 12
Carpano Antica Formula Vermouth, Italy, 16.5% 16
□ Cinzano 1940s Dry Vermouth, Italy, 16% 120
Cocchi Americano Rosa Vermouth, Italy, 16.5% 14
Cocchi Americano Vermouth, Italy, 16.5% 14
Cocchi di Torino Vermouth, Italy, 16% 14
Mancino Bianco Ambrato Vermouth, Italy, 16% 14
Mancino Rosso Amaranato Vermouth, Italy, 17% 14
Mancino Secco Dry Vermouth, Italy, 18% 14
□ Martini & Rossi 1940s Red Vermouth, Italy, 16% 115
□ Martini & Rossi 1970s Dry White Vermouth, Italy, 18.5% 49
Martini & Rossi 1970s Sweet Vermouth, Italy, 17% 80
Martini Extra Dry Vermouth, Italy, 15% 12
Martini Rosso Vermouth, Italy, 15% 12
Punt e Mes Vermouth, Italy, 16% 12
Cinzano 1757 Extra Dry Vermouth, Italy, 18% 18
Cinzano Extra Dry Vermouth, Italy, 18% 16
Asterly Bros. - Scofield's Dry Vermouth, England, 16% 18

APERITIF



Aperol, Italy, 11%	12
Campari, Italy, 25%	12
□ Campari 1960s, Italy, 25%	72
Bareksten Aquavit, Norway, 40%	22
Linie Aquavit, Norway, 41.5%	22
Bareksten Aquavit, Norway, 43%	25

DIGESTIF



Amaro Di Angostura, Trinidad & Tobago, 35%	20
Amaro Montenegro, Italy, 23%	14
Amaro Nonino Quintessentia, Italy, 35%	20
Averna, Italy, 29%	14
Branca Menta, Italy, 28%	14
Braulio, Italy, 35%	16
Cynar, Italy, 16.5%	14
Fernet Branca, Italy, 39%	14
Luxardo Bitter Bianco, Italy, 30%	14
Ramazotti, Italy, 30%	14
Vecchio Amaro Del Capo, Italy, 35%	18

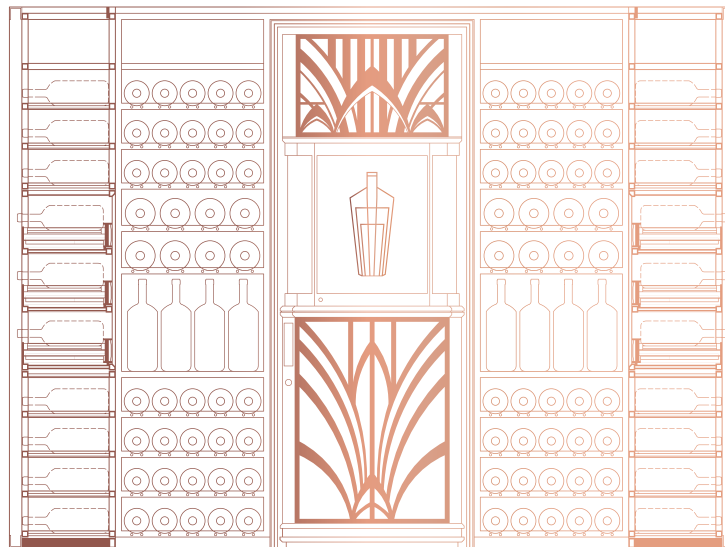
LIQUEUR



Amaretto Disaronno, Italy, 28%	16
Benedictine, France, 40%	16
□ Benedictine 1970s, France, 35%	34
Chartreuse Green, France, 47%	20
Chartreuse Yellow, France, 40%	20
Chartreuse V.E.P. Yellow, France, 42%	30
Chartreuse V.E.P. Green, France, 54%	30
Cointreau, France, 40%	16
Cointreau 1970s, France, 40%	50
□ Drambuie 1970s, Scotland, 40%	34
Grand Marnier, France, 40%	18
Galliano, Italy, 42.3%	16
Luxardo Albicocca Apricot, Italy, 30%	16
Luxardo Limoncello, Italy, 27%	16

Luxardo Maraschino Liqueur, Italy, 32%	15
Luxardo Sambuca Dei Cesari, Italy, 38%	16
Luxardo Sangue Morlacco Cherry, Italy, 30%	16
Mathilde Cassis Liqueur, France, 16%	16
Mathilde Pêche Liqueur, France, 18%	16
Mathilde Poire Liqueur, France, 18%	16
Vedrenne Pêche Liqueur, France, 15%	16
Vedrenne Poire Liqueur, France, 18%	16
Picon Biere a L'Orange, France, 18%	16
Pimm's No. 1, England, 25%	16
St. Germain Elderflower Liqueur, France, 20%	16
St. George Spiced Pear Liqueur, USA, 20%	16
Tempus Fugit Creme de Menthe, Switzerland, 28%	16
□ Vintage Orange Curaçao 1930s, France, 25%	160

THE ATLAS CHAMPAGNE COLLECTION



Champagne; a sparkling wine produced adhering to strict regulations and exclusively from the regions of Champagne, France. The Comité Interprofessionnel du vin de Champagne (CIVC) is the governing body for all the wines from Champagne. They have developed a comprehensive set of rules for the production of Champagne, which are regarded as the strictest in the world - thus, every bottle of Champagne is of a guaranteed quality and a specific profile that is unlike any other sparkling wine in the world.



Champagne is celebrated for its versatility and its romantic, rich culture. Extensively documented, Champagne's history is both wide and deep. Having a broad spectrum of styles which are made to be enjoyed in different occasions, Champagne has been present at the world's parties for hundreds of years.

We hear stories of Champagne in war time, on imperial dining tables and being the favoured tittle of the great figures of history. Perhaps it is the tiny bubbles percolating in a golden liquid that cause us to embrace all of the emotions ensconced in Champagne: love, hatred, happiness and tears.

Now is your time to enjoy the finest Champagnes the world has to offer. The ATLAS Champagne Collection is one of the largest in Asia. It has been carefully curated to bring out these sensations and stories through the finest wines from the Champagne region. Whether it is a special occasion or not, we are delighted to offer you our very favourite Champagnes to celebrate the joys in life.

The ATLAS Champagne Collection is arranged into three categories:

La Sélection: featuring beautiful Champagnes for all moments.

Le Terroir: a dedication and celebration of the 17 Grand Crus of Champagne, the single village releases that are at the heart of Champagne culture.

La Prestige: an extraordinary list of the most renowned Champagnes drawn from the Parkview Family Cellar and from the most iconic Champagne houses.

Go ahead and explore the remarkable world of Champagne. Our wine team stands ready to assist you in your journey.

Jack Cheung, *Family Sommelier*

The ATLAS Champagne Collection On Date of Printing
196

La Sélection

- Blancs
- Rosés

Le Terroir – Montagne De Reims

- Ambonnay
- Beaumont-sur-Vesle
- Bouzy
- Louvois
- Mailly
- Puisieulx
- Sillery
- Verzenay
- Verzy

Le Terroir – Vallée De La Marne

- Aÿ
- Tours-sur-Marne

Le Terroir – Côte Des Blancs

- Avize
- Chouilly
- Cramant
- Le Mesnil-Sur-Oger
- Oger
- Oiry

Le Terroir – Mixed Grand Cru Villages

- Blancs
- Rosés

La Prestige

- Piper-Heidsieck
- Charles Heidsieck
- Krug
- Salon
- Dom Pérignon
- Pol Roger
- Louis Roederer
- Bollinger
- Taittinger
- Deutz
- G.H. Mumm
- Shipwreck Champagne

RARE & SPECIAL BOTTLES

The ATLAS Champagne Collection includes some genuine treasures, of which only one or two bottles are available. Because of the extraordinarily rare nature of these bottles, they will be crossed off once enjoyed by our guests. If your preferred Champagne is not currently available, please accept our most sincere apologies! We would be delighted to recommend a suitable alternative.

The □ symbol denotes special bottles from the Family Collection.

LA SÉLECTION

In La Sélection, we celebrate great diversity of Champagne, bringing you a wealth of styles to suit your mood and the occasion. There are famous Champagne houses represented here, with both vintage and non-vintage champagnes for you to choose from.

BLANCS

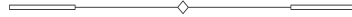
NON-VINTAGE

Bauget-Jouette La Carte Blanche Brut	NV	140
Telmont Réserve Brut	NV	160
R de Ruinart Brut	NV	170
Pol Roger Brut Reserve	NV	170
Nicolas Feuillatte "Grande Réserve" Brut	NV	170
Bruno Paillard Première Cuvée Extra Brut	NV	175
Lelarge-Pugeot Blanc de Blancs Extra-Brut	NV	180
Cattier Brut Nature Premier Cru	NV	180
Chavost Blanc de Meunier Brut Nature	NV	180
Vergnon's "Éloquence" Extra Brut Blanc de Blancs Grand Cru	NV	185
Laurent Perrier Brut "La Cuvee"	NV	185
Drappier "Zero" Brut Nature Blanc de Noirs (d: 2016-09)	NV	175
Tarlant "Zero" Brut Nature (d: 2014-09)	NV	255
Francoise Bedel - Dis, "Vin Secret" Extra-Brut	NV	210
Savart "L'Ouverture" Premier Cru Brut	NV	220
Jean-François Launay "Grain de Folie" Blanc de Blancs	NV	220
Roger Coulon "L'Hommee" Premier Cru Extra Brut	NV	250
Franck Pascal "Reliance" Brut Nature (d: 2014-10-02)	NV	260
Gosset Extra Brut	NV	260
Lanson "Extra Age" (d: 2016-06)	NV	270
Drappier "Quattour" Blanc de Blancs	NV	280
Tarlant "Cuvée Louis" Extra-Brut (d: 2014-07)	NV	290
Laherte Frères "Les Empreintes" Extra-Brut (d: 2012-03)	NV	340
Ruinart Blanc De Blanc	NV	295
Bérèche & Fils "Reflet d'Antan" (d: 2016-04)	NV	380
Marie-Courtin "Efflorescence" Blanc de Noirs Extra-Brut	NV	400
Gosset "15 ans de Cave a Minima"	NV	400
Tarlant "BAM!" Brut Nature (d: 2014-11-11)	NV	440
Laherte-Frères "Les 7" Extra-Brut	NV	450
David Léclapart "L'Apôtre" Premier Cru Blanc de Blancs Pas Dosé (v: 2009)	NV	450
□ David Léclapart "L'Artiste" Premier Cru Blanc de Blancs Pas Dosé (v: 2010)	NV	500
□ David Léclapart "L'Astre" Premier Cru Blanc de Noirs Pas Dosé (v: 2011)	NV	500
□ Doyard "La Libertine" Doux	NV	580

VINTAGE

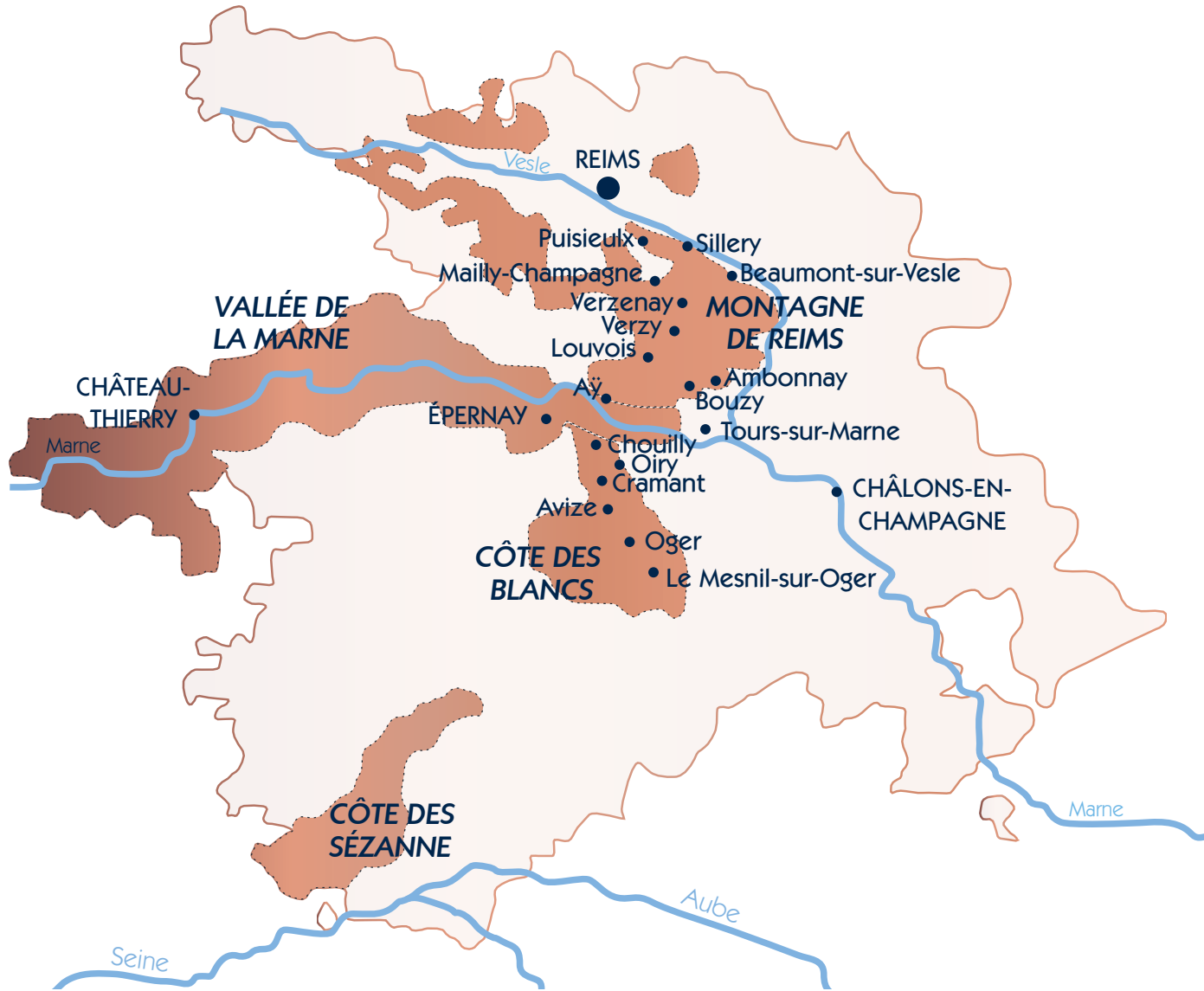
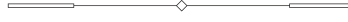
L. Aubry Fils "Le Nombre d'Or Campaniae Veteres Vites"	2013	240
Chapuy Cuvée Prestige "Livrée Noire"	2012	250
Nominé-Renard "Special Club"	2011	260
Philippe Gonet Blanc de Blancs	2009	260
Chartogne-Taillet "Chemin de Reims" Blanc de Blancs Extra-Brut	2010	310
Henriot Cuvée "Hemera"	2006	390
Pol Roger Millésime Blanc de Blancs	2015	400
Vilmart & Cie "Coeur de Cuvée" Premier Cru (d: 2014-03)	2007	450
Pol Roger Millésime	2015	340
Barons de Rothschild Blanc de Blancs	2006	600
Veuve Clicquot La Grande Dame	2012	650
Boërl & Kroff "B de Boërl & Kroff" (d: 2011-11)	2000	1000

ROSÉS

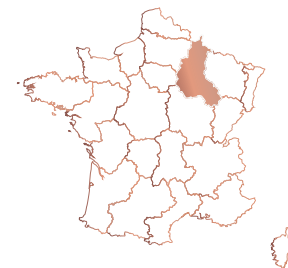


Telmont Réserve Rosé	NV	205
Henriot Rosé	NV	190
Drappier Rosé Brut Nature (d: 2016-08)	NV	210
Geoffroy Rosé de Saignée 1er Cru Brut	NV	225
Pascal Douquet "Anthocyanes" 1er Cru Brut Rosé	NV	240
Boizel Rosé	NV	250
Ruinart Rosé	NV	270
Deutz Rosé	2014	345
Laurent-Perrier Brut Cuvée Rosé Brut	NV	350
Drappier "Grande Sendree" Rose	2010	420

CHAMPAGNE



 Grand Cru Vineyards



LE TERROIR

In this section, we adhere to the "échelle des crus" system that was developed in the mid-1900s. This system divides the villages of Champagne into three levels of quality. From the highest tier, we present the 17 Grand Crus here, which make up just nine percent of the villages in the Champagne region.

MONTAGNE DE REIMS



AMBONNAY

Paul Déthune Blanc de Noir	NV	240
Paul Déthune "Cuvée Prestige - Princesse des Thunes" (d: 2013-10)	NV	240
Eric Rodez Blanc de Noirs (d: 2016-05)	NV	270
Eric Rodez Rosé (d: 2016-05)	NV	300
H. Billiot & Fils "Cuvée Laetitia" (d: 2013-10-21)	NV	370
Paul Déthune "Cuvée à l'Ancienne" (d: 2012-01)	NV	500
Marguet Père & Fils "Les Crayères" Extra-Brut (d: 2016-03)	2011	600
Marguet Père & Fils "La Grande Ruelle" Blanc de Noirs Extra-Brut (d: 2016-03)	2011	600
Marguet Père & Fils "Le Parc" Blanc de Blancs Extra-Brut (d: 2016-03)	2011	600
Marguet Père & Fils "Les Bermonts" Blanc de Blancs Extra-Brut (d: 2014-12)	2010	600
Marguet Père & Fils "Les Crayères" Extra-Brut (d: 2014-07)	2009	600

BEAUMONT-SUR-VESLE

Paul Sadi "Clos Virgile"	2012	290
--------------------------	------	-----

BOUZY

Pierre Paillard "Les Maillerettes" Blanc de Noirs Extra-Brut (d: 2016-04)	2010	300
Pierre Paillard "Les Mottelettes" Blanc de Blancs Extra-Brut (d: 2016-03)	2010	300
Camille Savès "Cuvée Anaïs Jolicoeur"	2012	350
Camille Savès "Les Loges" Blanc de Noirs	NV	400
Brice "Bouzy Millésime"	2008	400
Benoît Lahaye "Le Jardin de la Grosse Pierre" Brut Nature (d: 2016-02)	2011	500

LOUVOIS

Guy de Chasse "Cuvée Antide"	NV	300
------------------------------	----	-----

MAILLY

Ernest Remy Blanc de Noirs	NV	300
Ernest Remy Blanc de Noirs Demi-Sec	NV	300
Champagne "L'Intemporelle" Mailly	2007	450

PUISIEULX

François Secondé "Les Petites Vignes"	NV	350
---------------------------------------	----	-----

SILLERY

François Secondé "La Loge" Blanc de Noirs	NV	270
---	----	-----

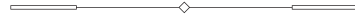
VERZENAY

Bernard Hatte "Cuvée Benjamin"	2012	240
Godmé Père et Fils Brut Millésimé	1999	350

VERZY

Louis de Sacy "Grand Soir"	2003	400
----------------------------	------	-----

VALLÉE DE LA MARNE



Aÿ

Philipponnat "Le Léon" Blanc de Noirs Extra-Brut (d: 2015-02)	2006	550
Jacquesson "Vauzelle Terme" Blanc de Noirs Extra-Brut (d: 2013-02-13)	2004	800
Henri Giraud D'AY Blanc de Blancs	2004	1400

TOURS - SUR - MARNE

Lamiable "Cuvée Heliades" Rosé	NV	350
Lamiable "Les Meslaines" Blanc de Noirs	2009	350
Lamiable "Cuvée Pheerie" Blanc de Blancs	2008	400
Harlin Pere et Fils "Cuvée Ephémère" Blanc de Noirs Extra-Brut (d: 2016-04)	2010	400

CÔTE DES BLANCS



AVIZE

Pierre Callot "Clos Jacquin" Blanc de Blancs	NV	370
Jacquesson "Champ Caïn" Blanc de Blancs Extra-Brut (d: 2013-02-27)	2004	900
Franck Bonville 'Camille Bonville' Blanc de Blancs	NV	240
Franck Bonville Rose	NV	260

CHOUILLY

Jack Legras "Cuvée Le Mont Aigu" Blanc de Blancs	NV	310
R&L Legras "Saint-Vincent" Blanc de Blancs	2000	350
Veuve J. Lanaud "Les Prêtrosses" Blanc de Blancs (d: 2016-07-30)	2008	360
Lenoble "Les Aventures" Blanc de Blancs	NV	380

CRAMANT

G.H. Mumm "Mumm de Cramant" Blanc de Blancs (d: 2014-02)	NV	280
Bonnaire "Prestige" Blanc de Blancs	NV	350

LE MESNIL-SUR-OGER

Pierre Moncuit "Nicole Moncuit" Vieille Vignes Blanc de Blancs	2004	320
Pierre Moncuit "Nicole Moncuit" Vieille Vignes Blanc de Blancs	2005	340
Pierre Peters 'Cuvee de Reserve' Blanc de Blancs	NV	235

OGER

Franck Bonville "Les Belles Voyes" Blanc de Blancs	NV	350
□ Claude Cazals "Clos Cazals" Blanc de Blancs Extra-Brut	2002	450

OIRY

Suenen Blanc de Blancs Extra-Brut	NV	380
-----------------------------------	----	-----

MIXED GRAND CRU VILLAGES



BLANCS

Duval Leroy Blanc de Blancs Brut Reserve	NV	195
Delamotte Blanc de Blancs	NV	200
Henriot Brut Soverain Magnum	NV	240
Pierre Péters Blanc de Blancs Extra-Brut	NV	255
Petit et Bajan "Nuit Blanche" Blanc de Blancs (d: 2017-05-03)	NV	270
Benoît Lahaye "Late Disgorgement" Extra Brut (d: 2016-10)	2007	270
Henriot Cuvée "L'Inattendue" Blanc de Blancs Grand Cru	2016	290
Ayala Blanc de Blancs (d: 2015-09)	2008	290
Pierre Péters "Réserve Oubillée" Blanc de Blancs	NV	290
Philipponnat "Cuvée 1522" (d: 2016-03)	2006	320
Taittinger "Prélude"	NV	340
Suënen "C+C" Blanc de Blancs Extra-Brut	NV	380
Ayala "Cuvée Perle d'Ayala"	2005	420
Delamotte Blanc de Blancs	2002	430
Suënen Blanc de Blancs Extra-Brut	2009	450
Bruno Paillard Blanc de Blancs (d: 2013-04)	2004	560
Delamotte "Collection" Blanc de Blancs	2002	750

ROSÉS

Petit et Bajan "Nymphaea" Rosé (d: 2017-05-03)	NV	300
--	----	-----

LA PRESTIGE

This section shares our family's philosophy about being a patient and persistent collector of some of the finest things in the world. This value is shared by our family and many of the traditional Champagne families. Here we present truly extraordinary Champagnes from the Parkview Family Cellar and some of the greatest Champagne houses. "Prestige Cuvée" is the word used by the houses to describe their, and therefore our, best offerings.

PIPER-HEIDSIECK



Credited as a Champagne worthy of a queen, Marie Antoinette was the first brand ambassador of Piper-Heidsieck back in 1785. Cuvée Rare was created in 1885 to celebrate its centennial with a bottle designed by Pierre-Karl Fabergé, star jeweler of Russian Tsar Alexander III. Piper today still gives the same dash of seduction it has since 1785.

Piper-Heidsieck Cuvée Réserve Essentiel ATLAS	NV	185
Piper Heidsieck Millésime	2014	250
Piper-Heidsieck Rare	2006	580

CHARLES HEIDSIECK



In 1851, at the young age of 29, Charles Heidsieck founded the house bearing his own name. Now owned by the EPI group since 2011, the house is gaining its former glory as one of the most highly esteemed champagne houses of the century. Headed by Cellarmaster Cyril Brun, these champagnes are characterized by freshness, power, richness and elegance.

Charles Heidsieck "Brut Réserve" (d: 2016)	NV	170
Charles Heidsieck Millésime	2012	450

KRUG

Behind every precious drop of Krug stands the dream of a visionary. One man who, long before others, understood that the essence of Champagne is pleasure. Over 170 years ago, Joseph Krug broke with convention to follow this vision. In doing so, he created some of most generous expressions of Champagne each year. This tradition continues to this day.

□ Krug "Clos d'Ambonnay" Grand Cru Blanc de Noirs	1995	7000
□ Krug "Clos d'Ambonnay" Grand Cru Blanc de Noirs	1996	7000
□ Krug "Clos d'Ambonnay" Grand Cru Blanc de Noirs	2000	8000
□ Krug "Clos du Mesnil" Grand Cru Blanc de Blancs	1988	6500
□ Krug "Clos du Mesnil" Grand Cru Blanc de Blancs	1990	4900
□ Krug "Clos du Mesnil" Grand Cru Blanc de Blancs	1992	4500
□ Krug "Clos du Mesnil" Grand Cru Blanc de Blancs	1998	5000
Krug "Grande Cuvée" 171 Ème Édition	MV	745

SALON

Salon was created as a private label, from similar beginnings as the more famous Cristal. Since its first vintage in 1905, Salon was shared among private clients and friends of the visionary Eugène Aimé Salon, who believed that the Chardonnay in Le-Mesnil-Sur-Oger could make fine and elegant Champagnes without blending with Pinot Noir and Pinot Meunier. And so the idea of Blanc de Blancs was born.

□ Salon "S" Le Mesnil Grand Cru Blanc de Blancs	1971	9000
Salon "S" Le Mesnil Grand Cru Grand Cru Blanc de Blancs	2012	3600

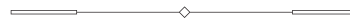
DOM PÉRIGNON



First released in 1921, during the dawn of the Art Deco era, this Champagne bears the same name as the famous Benedictine monk who arguably created Champagne. One of the first “Cuvée” concepts, it was soon destined to be one of the blue bloods of Champagne.

□ Dom Pérignon "Plénitude Troisième (P3)"	1971	8000
Dom Pérignon "Réserve de l'Abbaye"	1990	4000
□ Dom Pérignon	1947	6000
□ Dom Pérignon	1964	3000
□ Dom Pérignon	1973	2800
□ Dom Pérignon	1976	2400
Dom Pérignon Magnum	2010	2000
Dom Pérignon Plénitude Deuxième P2 Magnum	2002	5000
Dom Pérignon	2013	630

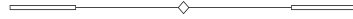
POL ROGER



The relationship of Pol Roger and the beloved Sir Winston Churchill was never a commercial or superficial one. Pol Roger had been the favourite champagne of Churchill since 1908 and had even befriended Madame Odette Pol-Roger at a party at the British Embassy in Paris in 1944. In 1984 Pol Roger honored this legendary relationship with the release of the Pinot Noir-dominant Cuvée Sir Winston Churchill.

Pol Roger “Cuvée Sir Winston Churchill”	1979	3500
Pol Roger “Cuvée Sir Winston Churchill”	1988	3000
Pol Roger “Cuvée Sir Winston Churchill” (Magnum)	2013	2000

LOUIS ROEDERER



Being the favourite house of Tsar Alexander II, Louis Roederer technically created the world's first "Prestige Cuvée" for the paranoid Tsar in 1876. Living in fear of assassination by poisons and bombs, he ordered a Champagne in clear bottles and with a flat bottom, to be made and served for the famous Three Emperors Dinner at Café Anglais in Paris. The first commercially available vintage of Cristal was 1945, many decades after the original release. Yet the famous story of its founding remains part of Champagne's rich history.

□ Louis Roederer "Cristal"	1964	8000
□ Louis Roederer "Cristal"	1966	6000
□ Louis Roederer "Cristal"	1976	4900
□ Louis Roederer "Cristal"	1981	3000
Louis Roederer "Cristal"	2014	1100

BOLLINGER



Known as the famed James Bond Champagne, Bollinger is one of most respected Champagne houses. Bollinger's famous Prestige Cuvée, "La Grande Année" is not the only sought-after label from this house, The "Vieilles Vignes Françaises" made from parcels of ungrafted Pinot Noir and the late disgorgement "Récemment Dégorgé (R.D.)" label are also on the top of connoisseurs' lists.

□ Bollinger "Récemment Dégorgé (R.D.)" Extra Brut (<i>Silver Jubilee Edition</i>)	1966	5000
Bollinger "Récemment Dégorgé (R.D.)" Extra Brut	1979	2000
Bollinger "Récemment Dégorgé (R.D.)" Extra Brut	1981	1800
□ Bollinger "Récemment Dégorgé (R.D.)" Extra Brut (Magnum)	1973	4500
□ Bollinger "Vieilles Vignes Françaises" Blanc de Noirs	1986	6000
□ Bollinger "Vieilles Vignes Françaises" Blanc de Noirs	1989	6000
□ Bollinger "Vieilles Vignes Françaises" Blanc de Noirs	1990	8000
Bollinger La Grande Année	2007	500

TAITTINGER

The name Taittinger is very much associated with the French political world. Pierre Taittinger, was a powerful politician and a champagne distributor. Pierre restored the House of the Counts of Champagne in Reims during his lifetime, before it was unfortunately destroyed by the Germans during the World War II. The Prestige Cuvée of Taittinger was created to commemorate the powerful reign of the Counts of Champagne during the Medieval Ages.

Taittinger "Comte de Champagne" Blanc de Blancs	1982	2100
□ Taittinger "Comte de Champagne" Blanc de Blancs (Magnum)	1986	4000

DEUTZ

Established in 1838, Deutz has a glorious past. Being the favourite Champagne of the English in the 1900s, Deutz exported more than 600,000 bottles to the United Kingdom by then. The company is a living fossil, which is a testament to the glorious history of Champagne as one of the most celebrated drinks in the world. Nowadays Deutz is a rare find, especially its prestigious tribute to the owner, the Cuvée William Deutz.

Deutz "Cuvée Amour de Deutz"	1999	600
Deutz "Cuvée Amour de Deutz"	2005	700

G. H. MUMM

Established in 1827, this German family created the famous "Cordon Rouge", a silk ribbon on each bottle of Champagne, which became iconic in the Champagne bottle designs. By 1904, Mumm became the official supplier of Champagne to British royalty. Mumm's prestige cuvée is named after the visionary man who led Champagne Mumm into quality and international prestige in the 20th Century.

□ G.H. Mumm "Cuvée René Lalou"	1973	1800
G.H. Mumm "Cuvée René Lalou"	1976	1800

SHIPWRECK CHAMPAGNE

On 26 October 1916, amidst the devastation of the World War I, a small Swedish smuggling schooner named “Jönköping” was being quietly loaded with contraband in the city of Gävle in the south of Sweden. Among the packing list was a modest 3,000 bottles of Champagne, tasted, liked and ordered by Tsar Nikolai II, the last Emperor of the Russian Empire. It was Jönköping’s tenth smuggling journey of the year. Everything seemed to go smoothly, with none of the crew suspecting that this trip would be their last.

The day was 3 November of 1916, when a German U-22 submarine intercepted this unlucky Jönköping off the Finnish coast and sank it along with its haul of precious contraband. The Champagnes together with the Jönköping, since then, quietly slept at a depth of 64 meters under the sea, for the next 82 years.

Jönköping was salvaged in 1998, its cargo held the 1907 Heidsieck & Co. Monopole “Goût Américain”, a Champagne which was also served on the famous Titanic (ironically also sunk in 1912). Fortunately, due to the perfect pressure and temperature deep in the Baltic sea, many of the original 3,000 Champagne bottles made it through this 90-year transcendence of time safely, with corks intact and no leakage.

□ Heidsieck & Co. Monopole “Goût Américain”	1907	190,700
Heidsieck & Co. Monopole “Goût Américain” Extra Dry	NV	195
Heidsieck & Co. Monopole Blue Top Sec	NV	160
Heidsieck & Co. Monopole Red Top Sec	NV	165
Heidsieck & Co. Monopole Silver Top Sec	NV	180
Heidsieck & Co. Monopole Gold Top Sec	NV	190
Heidsieck & Co. Monopole Cuvée Impératrice	NV	350



WINES OF THE WORLD

Presenting our appreciation for the finer things in life.
A carefully curated collection sourced from all around the globe.

WHITE

Domaine Albert Mann Grand Cru 'Schlossberg' 2018 Alsace, France • Riesling	280
Dr Loosen Wehlener Sonnenuhr Kabinett 2022 Mosel, Germany • Riesling	95
Trimbach Classic Pinot Blanc 2021 Alsace, France • Pinot Blanc	95
Mario Schiopetto Collio DOC 2020 Friuli-Venezia, Italy • Pinot Grigio	120
Giacomo Ascheri 'Cristina Ascheri' 2016 Piemonte, Italy • Arneis	100
Pietracupa Greco di Tufo DOCG 2020 Campania, Italy • Greco	145
Pazo Señorans Albariño 2021 Rías Baixas, Spain • Albariño	120
Bodegas Roda I Blanco 2020 Rioja, Spain • Viura, Malvasia de Rioja, Granacha Blanca	330
Mme Laroche, Domaine aux Moines Savennières-Roche aux Moines 2013 Loire Valley, France • Chenin Blanc	150
Henri Bourgeois La Demoiselle De Bourgeois Pouilly-Fume 2019 Loire Valley, France • Sauvignon Blanc	170
Te Mata Estate Sauvignon Blanc 2022 Hawkes Bay, New Zealand • Sauvignon Blanc	120
Domaine Paul Prieur et Fils Sancerre 2022 Loire Valley, France • Sauvignon Blanc	120

WINES OF THE WORLD - WHITE . ROSÉ

William Fèvre Saint-Bris 2019 Burgundy, France • Sauvignon Blanc	100
Domaine Barons De Rothschild (Lafite) Légende Bordeaux Blanc 2019 Bordeaux, France • Sauvignon Blanc, Sémillon	90
Domaine Seguinot Bordet Chablis 2022 Burgundy, France • Chardonnay	100
Louis Moreau Chablis 'Les 8' 2019 Burgundy, France • Chardonnay	110
Edouard Delaunay "Septembre" Bourgogne 2021 Burgundy, France • Chardonnay	110
Bouchard Père & Fils Bourgogne Chardonnay Reserve 2019 Burgundy, France • Chardonnay	105
Vincent Girardin Puligny-Montrachet Vieilles Vignes 2020 Burgundy, France • Chardonnay	260
Domaine J.A. Ferret Pouilly-Fuissé 2020 Burgundy, France • Chardonnay	150
Julien Pilon 'Le Bruit des Vagues' 2021 Rhône Valley, France • Marsanne, Rousanne	110
Schuchmann 'Vinoterra' Kisi 2012 Khaketi, Georgia • Kisi	145
Domaine Rolet Pere & Fils Arbois Blanc Tradition 2011 Jura, France • Chardonnay, Savagnin	105
Domaine Rolet Père & Fils Arbois Vin Jaune (620ml) 2009 Jura, France • Savagnin	150
V. Guibert De La Vaissière Mas De Daumas Gassac 2016 Languedoc-Roussillon, France • Viognier, Petit Manseng	160
Étienne Guigal Condrieu 2015 Rhône Valley, France • Viognier	220

ROSÉ

M De Minuty Rosé 2022 Provence, France • Grenache, Cinsault, Syrah	95
Château D'ollières 2020 Provence, France • Cinsault, Grenache	95
Chateau D'esclans Whispering Angel 2022 Provence, France • Grenache, Cinsault, Rolle	115
Chateau L'escarelle 'Les Deux Anges' 2022 Provence, France • Syrah, Grenache, Cinsault	105

RED

Domaine Faiveley Bourgogne 2021 Burgundy, France • Pinot Noir	145
Maison Gautheron D'anost Gevrey-Chambertin "Combes Du Bas" 2020 Burgundy, France • Pinot Noir	290
Domaine Génot-Boulangier Chambolle-Musigny 2019 Burgundy, France • Pinot Noir	250
Domaine Chapuis Aloxe-Corton 1er Cru 2021 Burgundy, France • Pinot Noir	245
Bouchard Pere & Fils Nuits St Georges 1er Cru "Les Cailles" 2014 Burgundy, France • Pinot Noir	375
Domaine Chandon De Briailles Savigny-Les-Beaune "Aux Lavières" 1er Cru 2019 Burgundy, France • Pinot Noir	240
Maison Leroy Bourgogne Rouge 2017 Burgundy, France • Pinot Noir	650
Waits-Mast Mariah Vineyard 2019 Mendocino Ridge, Usa • Pinot Noir	170
Felton Road Bannockburn 2021 Central Otago, New Zealand • Pinot Noir	205
Domaine de Javerniere Morgon 'Cote du Py' 2018 Beaujolais, France . Gamay	110
Vietti Tre Vigne Barbera D'asti DOCG 2021 Piedmont, Italy • Barbera	100
Fantino Cascina Dardi Barolo Bussia Riserva 2011 Piemonte, Italy • Nebbiolo	315
E. Pira & Figli Chiara Boschis 'Mosconi' Barolo 2018 Piemonte, Italy • Nebbiolo	310
Polvanera Gioia Di Colle Primitivo DOC 2020 Puglia, Italy • Primitivo	140
Dal Forno Romano Valpolicella Superiore DOC 2017 Veneto, Italy • Corvina, Rondinella, Croatina, Oseleta	370
Tommasi Amarone Della Valpolicella DOCG 2019 Veneto, Italy • Corvina, Rondinella	190
Barbanera Chianti DOCG 2022 Tuscany, Italy • Sangiovese	95
Marchesi Antinori Pian Delle Vigne Brunello Di Montalcino DOCG 2017 Tuscany, Italy • Sangiovese	240

WINES OF THE WORLD - RED

Sasso Al Poggio Super Tuscan Toscana IGT 2018 Tuscany, Italy • Sangiovese, Cabernet Sauvignon, Merlot	175
Marchesi Antinori Tignanello Toscana IGT 2019 Tuscany, Italy • Sangiovese, Cabernet Franc, Cabernet Sauvignon	540
Bodegas Roda Reserva 2019 Rioja, Spain • Tempranillo	205
El Coto De Imaz Gran Reserva 2017 Rioja, Spain • Tempranillo, Graciano	145
R. López De Heredia Viña Tondonia 2011 Rioja, Spain • Tempranillo, Garnacho, Mazuelo, Graciano	180
Luigi Bosca Finca La Linda Old Vines Malbec 2021 Mendoza, Argentina • Malbec	110
Couvent des Jacobins 'Les Menut des Jacobins' Saint-Emilion Grand Cru 2017 Bordeaux, France • Merlot, Cabernet Franc	120
Château L'escadre Blaye Tradition (375ml), 2017 Bordeaux, France • Merlot, Cabernet Sauvignon, Malbec	50
Château L'escadre Grande Réserve 2019 Bordeaux, France • Merlot, Cabernet Sauvignon, Malbec	110
Clos Saint-Vincent Saint-Émilion Grand Cru 2018 Bordeaux, France • Merlot, Cabernet Franc, Cabernet Sauvignon	120
Château Simard Saint-Émilion Grand Cru 2011 Bordeaux, France • Merlot, Cabernet Franc	120
Château Bechereau Lalande De Pomerol 2019 Bordeaux, France • Cabernet Franc, Merlot	135
Réserve de la Comtesse, Château Pichon Longueville 2013 Bordeaux, France • Cabernet Sauvignon, Merlot, Cabernet Franc, Petit Verdot	190
Almaviva 2014 Maipo Valley, Chile • Cabernet Sauvignon, Carmenere	590
Taaibosch Crescendo 2019 Stellenbosch, South Africa • Cabernet Franc, Merlot, Cabernet Sauvignon	150
Henschke Keyneton Euphonium 2017 Eden Valley, Australia • Shiraz, Cabernet Sauvignon, Merlot, Cabernet Franc	250
Lethbridge "Que Syrah Syrah" 2018 Victoria, Australia • Shiraz	110
Paul Jaboulet Aîné Côtes Du Rhône Parallèle 45 2021 Rhône Valley, France • Syrah, Grenache, Mourvèdre	100

Château La Nerthe Châteauneuf Du Pape 2019	245
Rhône Valley, France • Grenache, Syrah, Mourvèdre, Cinsault	
Tardieu-Laurent Châteauneuf-Du-Pape Cuvée Spéciale 2006	295
Rhône Valley, France • Grenache, Syrah, Mourvèdre	
Domaine de Marcoux Lirac 'La Lorentine' 2021	115
Rhône Valley, France • Grenache, Syrah, Mourvèdre	

SWEET

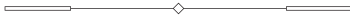


Angerhof Tschida Auslese 2021	90
Burgenland, Austria • Chardonnay, Traminer, Sauvignon Blanc	
Yves Cuilleron Condrieu Ayguets (500ml) 2006	260
Rhône Valley, France • Viognier	
Château Coutet Barsac 2009	300
Bordeaux, France • Sauvignon Blanc, Semillon	
Château d'Yquem Sauternes 1996	720
Bordeaux, France • Sauvignon Blanc, Semillon	
Chateau Bastor Lamontagne Sauternes 2010	205
Bordeaux, France • Sauvignon Blanc, Semillon	
Disznoko Aszu 5 Puttonyos Tokaji 2013 (500ml)	185
Tokaj, Hungary • Furmint	

FAMILY COLLECTION

Brought to Singapore from the family collection, a sampling representing the Parkview Family Cellar's genuine passion for fine wine. Objects of beauty that truly stand the test of time.

WHITE



Château Haut-Brion Blanc Pessac-Léognan 1988 Bordeaux, France • Semillion, Sauvignon Blanc	2500
Château Haut-Brion Blanc Pessac-Léognan 1985 Bordeaux, France • Semillion, Sauvignon Blanc	4500
Maison Leroy Bourgogne Blanc 2017 Burgundy, France • Chardonnay	650
Domaine De La Vougeraie 1er Cru "Les Clos Blanc De Vougeot" Monopole Corton-Charlemagne 2005 Burgundy, France • Chardonnay	850
Domaine De Montille Corton-Charlemagne Grand Cru 2019 Burgundy, France • Chardonnay	600
Domaine Henri Boillot Corton-Charlemagne Grand Cru 2012 Burgundy, France • Chardonnay	800
Jean-Noël Gagnard Bâtard-Montrachet Grand Cru 2013 Burgundy, France • Chardonnay	1000
Lucien Le Moine Bienvenues-Bâtard-Montrachet Grand Cru 2010 Burgundy, France • Chardonnay	1200
Lucien Le Moine Bâtard-Montrachet Grand Cru 2008 Burgundy, France • Chardonnay	1300
Maison Chanzy Bâtard-Montrachet Grand Cru 2013 Burgundy, France • Chardonnay	1300
Domaine Des Comtes Lafon Meursault 2004 Burgundy, France • Chardonnay	5500

RED

Domaine Armand Rousseau Pere Et Fils Chambertin Grand Cru 2000 Burgundy, France • Pinot Noir	7000
Domaine Armand Rousseau Pere Et Fils Chambertin Grand Cru 1999 Burgundy, France • Pinot Noir	7000
Nicolas Potel Clos De Vougeot Grand Cru 2005 Burgundy, France • Pinot Noir	2100
Domaine Thénard Grands Echezeaux Grand Cru 2017 Burgundy, France • Pinot Noir	800
Domaine Perrot-Minot Mazoyeres-Chambertin Grand Cru 2013 Burgundy, France • Pinot Noir	1200
Lucie Et Auguste Lignier Clos De La Roche Grand Cru 2001 Burgundy, France • Pinot Noir	2000
Domaine De Montille Vosne Romanee 1er Cru Aux Malconsorts 2011 Burgundy, France • Pinot Noir	1500
Château Mouton Rothschild, Pauillac 1974 Bordeaux, France • Cabernet Sauvignon, Merlot	3000
Château Mouton Rothschild, Pauillac 1982 Bordeaux, France • Cabernet Sauvignon, Merlot	7000
Château Lafite Rothschild, Pauillac 2005 Bordeaux, France • Cabernet Sauvignon, Merlot	3000
Château Lafite Rothschild, Pauillac 1989 Bordeaux, France • Cabernet Sauvignon, Merlot	6000
Château Lafite Rothschild, Pauillac 1982 Bordeaux, France • Cabernet Sauvignon, Merlot	8000
Château Margaux 1982 Bordeaux, France • Cabernet Sauvignon, Merlot	6000
Château Palmer, Margaux 1961 Bordeaux, France • Cabernet Sauvignon, Merlot	9000
Château Haut-Brion, Pessac-Léognan 1964 Bordeaux, France • Cabernet Sauvignon, Merlot	2500
Château Haut-Brion, Pessac-Léognan 1975 Bordeaux, France • Cabernet Sauvignon, Merlot	2500
Château Haut-Brion, Pessac-Léognan 1982 Bordeaux, France • Cabernet Sauvignon, Merlot	6000
Château Pétrus, Pomerol 2004 Bordeaux, France • Merlot	5000
Château Pétrus, Pomerol 1975 Bordeaux, France • Merlot	5150

WINES OF THE WORLD - FAMILY COLLECTION . RED

Château Pétrus, Pomerol 1989 Bordeaux, France • Merlot	9800
Château Cheval Blanc Saint-Émilion Grand Cru 1982 Bordeaux, France • Cabernet Franc, Merlot	2300
Château Cheval Blanc Saint-Émilion Grand Cru 1990 Bordeaux, France • Cabernet Franc, Merlot	2700
Tenuta San Guido Sassicaia Bolgheri DOC 2018 Tuscany, Italy • Cabernet Sauvignon, Cabernet Franc	990
Ornellaia Bolgheri Superiore DOC 2015 Tuscany, Italy • Cabernet Sauvignon , Merlot, Petit Verdot, Cabernet Franc	990
Domaine Paul Jaboulet Aîné Hermitage La Chapelle 1988 Rhône Valley, France • Syrah	1100

